

"KCU has offered a fresh approach to learning for our children and their families; encouraging opportunities beyond the classroom and fostering a love of learning that they will keep for life."

– Kent Headteacher –

What is Kent Children's University?

Kent Children's University (KCU) is part of a national initiative that encourages and celebrates children and young people who take part in learning activities outside of school hours. Learning can be at either CU subscribed schools in Kent, at home or at registered activity providers across the county, called Learning Destinations.

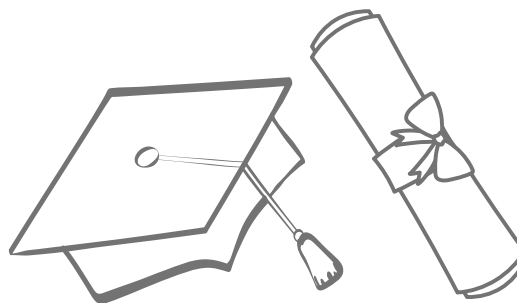
At the heart of our work is the ambition to raise aspirations, boost achievement and foster a love of learning in children and young people.



Rewarding Participation

Children's University students use Passports to Learning in which they record the number of completed CU validated learning activities they have participated in.

Children are encouraged to progress through the national certification scheme. One credit is awarded for every hour of learning, adding up to awards such as certificates. We hold special graduation ceremonies in schools and universities across Kent.



Outcomes for Learners

For every child that takes part in Children's University we want the following outcomes:

- They feel they have grown in confidence and self-belief
- They have enjoyed new experiences, in new places and want to keep exploring
- They believe they have a broader range of essential skills
- They feel empowered to make positive choices about their future
- They see that learning is fun, aspirational and lifelong
- They feel their eyes have been opened to a multiplicity of learning activities and opportunities
- They feel celebrated for their commitment to learning by their family, school and community.

Why choose Kent Children's University?

The Social Mobility Commission's July 2019 report ("An Unequal Playing Field") highlights disparities in children's participation rates across a wide range of extra-curricular activities depending on their social background.

One of the main findings was that children from the poorest backgrounds are three times more likely to not take part in any of the extra-curricular activities examined compared to those from the wealthiest backgrounds.

"It is shocking that so many children from poorer backgrounds never get the chance to join a football team, learn to dance or play music. As a result they miss out on important benefits - a sense of belonging, increased confidence and social skills which are invaluable to employers. It is high time to level the playing field."

(Dame Martina Milburn, Chair of the Social Mobility Commission)

By the time a child turns 18, they will have spent just nine percent of their waking life in a classroom. Children's University is about making the most of the remaining 91 percent.



Raising Aspirations
Learning Together
Celebrating Achievement

Contact us:   

 03301 651 042

 [www.theeducationpeople.org/
kent-childrens-university](http://www.theeducationpeople.org/kent-childrens-university)

 kcu@theeducationpeople.org

THE EDUCATION
PEOPLE

