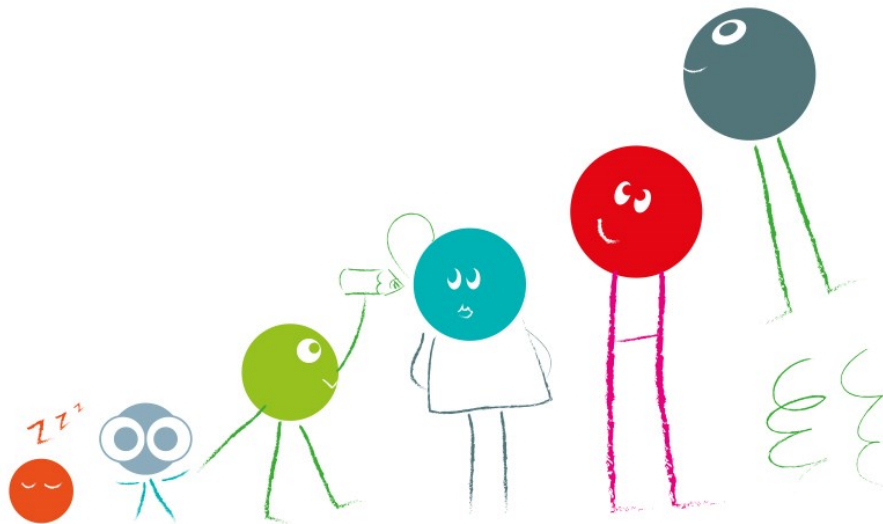




Early Years and Childcare Excellence

Early Years and Childcare Bulletin

May 2017



Kent County Council

Early Years and Childcare Service

Contents

Page 2	Welcome and Introduction Alex Gamby
Page 4	News and Updates
Page 6	Threads of Success Training and Services
Page 11	Contact Us

Welcome and Introduction Alex Gamby, Head of Early Years and Childcare

Education Services Company

Further to information shared at Early Years and Childcare Briefing and Networking Sessions and in previous editions of this Bulletin about plans to establish an Education Services Company, I am pleased to be able to tell you that on 27 March, Kent County Council's Cabinet agreed that this should proceed. Plans are now well underway for moving this forward, including setting up a Stakeholder and Commissioning Board, expected to meet first in June and including representation from schools and Early Years and Childcare settings. The Early Years and Childcare representative will be Lisa Evans, Director of Abacus Childcare Ltd in Shepway and Chair of Kent's Early Years and Childcare Provider Association. Further information will follow at Early Years and Childcare Briefing and Networking Sessions in June. Please see page 10 for dates and venues.

30 Hours of Free Childcare

Publications from the Department for Education in relation to 30 Hours of Free Childcare are as follows:

[Early education and childcare - Statutory guidance for local authorities, effective from September 2017](#)

[Early Years entitlements: operational guidance for local authorities and providers, to provide more detail around the expectations about how the free entitlements should be delivered](#)

[The Model Agreement – Early Years provision free of charge and free childcare](#)

KCC is considering this for Kent providers and the Kent Provider Agreement will be released in May 2017.

30 Hours Provider Information Seminars in June

Further to Kent's 30 Hours of Free Childcare Seminars held in March, a further round of seminars will be offered in June. There will be one Seminar per district plus four evening Seminars, particularly to enable childminders to attend. These seminars will be practically focused and will include an appraisal of the Kent Provider Agreement, due to be released in May, together with how to claim funding, the eligibility checking process and the Grace Period.

To book your place via CPD Online, click on the event code below:

Area	Date of Event	Timing	Venue	Event Code
East	05/06/2017	7.30 - 9.30 pm	The Spitfire Ground St Lawrence	EYC 17/117
Ashford	06/06/2017	09:30-11:30	Ashford International - Canterbury Suite	EYC 17/118
Shepway	07/06/2017	09:30-11:30	Hythe Imperial Hotel & Spa	EYC 17/119
Dover	08/06/2017	09:30-11:30	The Ark Christian Centre	EYC 17/120
Gravesham	09/06/2017	09:30-11:30	Best Western - Manor Hotel	EYC 17/121
Canterbury	13/06/2017	09:30-11:30	The Spitfire Ground St Lawrence	EYC 17/122
Thanet	14/06/2017	09:30-11:30	St Augustines College Thanet	EYC 17/123
Sevenoaks	16/06/2017	09:30-11:30	Darenth Valley Golf Club	EYC 17/124
Dartford	19/06/2017	09:30-11:30	David Lloyd Leisure - Dartford	EYC 17/125
North	20/06/2017	7.30 - 9.30 pm	Mercure - Dartford Brands Hatch Hotel	EYC 17/126
West	22/06/2017	7.30 - 9.30pm	The Hop Farm - Dray	EYC 17/127
Swale	27/06/2017	14.00 – 16.00	Holiday Inn Sittingbourne - The Coniston	EYC 17/128
Tonbridge & Malling	28/06/2017	09:30-11:30	The Hop Farm - Dray	EYC 17/129
South	28/06/2017	7.30 - 9.30 pm	Holiday Inn - Ashford North	EYC 17/130
Maidstone	29/06/2017	09:30-11:30	Marriott Tudor Park Hotel and Country Club	EYC 17/131
Tunbridge Wells	30/06/2017	09:30-11:30	Salomons	EYC 17/132

Transition in the context of 30 Hours of Free Childcare:

Please follow this [link](#) to 'Transition and 30 Hours' to view a recently issued addendum to the Transition Matters Framework. This will also be made available at Headteacher Breakfast Briefings in May, and the 30 Hours Seminars in June. We hope you will find this guide and checklist useful when you are planning for effective transition in the light of the introduction of 30 Hours of Free Childcare.

30 HOURS OF FREE CHILDCARE*



News and Updates

Ofsted Document - Early Years Inspections: Myths

Ofsted has produced this [document](#) to confirm the facts about their Early Years inspections and to dispel those myths that can sometimes result in unnecessary workloads for registered child carers. It should be read alongside the [Early Years Inspection Handbook](#)

Changes to Literacy and Numeracy Requirements for Newly Qualified Level 3 Early Years Educator Staff

To count in ratios at Level 3, practitioners **must** have also achieved a minimum of a Level 2 qualification or equivalent in both English and Maths. This will apply to all those who have gained qualifications since September 2014. The Department for Education has defined the suitable Level 2 qualifications on the following [link](#).

EYFS (2017) 3.23, footnote 28 and 29

First Aid Requirements

All newly qualified Level 2 and Level 3 entrants to Early Years (**qualified since 30th June 2016**) must have a Paediatric First Aid (PFA) certificate within three months of starting work in order to count in the ratios at Level 2 or 3. This can either be an emergency PFA certificate or a full PFA certificate.

Practitioners who qualified on or since **30th June 2016 to 2nd April 2017** must hold a PFA certificate by **2nd July 2017** to count in staff ratios.

The new [Early Years Foundation Stage Statutory Framework 2017 \(EYFS\)](#), Annex A, sets out the required minimum course content expectations and states that the emergency PFA should be a minimum of six hours face to face, excluding breaks. The full PFA should last for a minimum of twelve hours, excluding breaks.

Annex A also states providers should consider whether paediatric first aiders need to undertake annual refresher training, during the three years' certification period to help maintain basic skills and keep up to date with any changes to procedures. Providers can make an exemption if staff members are unable to gain the certificate due to disability. Providers should also display or make available to parents their PFA certificates.

EYFS (2017) 3.25, footnote 30 and 31. Plus Annex A

Charity News

The Charity Commission has announced that it has updated a key piece of its financial guidance - [Charity finances: trustee essentials \(CC25\)](#) - in a drive to ensure trustees understand their basic financial responsibilities when running a charity. They confirmed that trustees' legal duties regarding financial management have not changed but that the Commission is making a conscious push to ensure trustees are best placed to protect their charity's assets and resources. As part of this, it is urging trustees to read Charity finances: trustee essentials (CC25) which has been refreshed and made more accessible and readable. It is also vital that trustees are familiar with the charity's governing document, understand the finances, ensure effective control and procedures are in place and work, and ask the right, and sometimes difficult questions.

[Charity finances: trustee essentials \(CC25\)](#), originally published in 2011 as Managing charity assets and resources (CC25), covers the most common areas of managing charity resources including internal financial controls, charity reserves, and staff and volunteers, signposting further reading where required. Charity governance, finance and resilience: 15 questions trustees should ask, has also been re-published. The Commission is conducting a wider ongoing review of how it supports trustees in this area, including working with external partners and umbrella bodies and improving navigation to its online guidance.

Ofsted Registration Changes

A reminder that if your setting is going through a change of registration via Ofsted please ensure you inform KCC Management Information as well as your Childcare Sufficiency Officer, as we may need to re-register you in order to receive the Early Education funding.

Also, please keep us up to date with any staff or contact detail changes via eyfe@kent.gov.uk as failure to do so could result in late or missed Early Education payments.

Workforce Bursaries

Considering embarking on a new challenge? Developing your knowledge or undertaking a higher level qualification? We are currently seeking 'expressions of interest' from practitioners who are interested in applying for a bursary towards a BA (Honours) Degree or Foundation Degree in the Early Years and Childcare field or Early Years Educator (Level 3), through one of our approved providers.

We have been and continue to be committed to providing whatever financial support we are able to provide for students to study. We firmly believe that this has and will continue to contribute to the high quality of practice in Kent's Early Years and Childcare sector.

Bursaries will be allocated in line with available funding and our criteria, and in respect of the BA

(Honours) and Foundation Degrees there will be priority given to those settings that do not yet have a graduate leading practice.

For more information or to express an interest in applying for a bursary, please email: earlyyearsworkforce.ask@kent.gov.uk and an application form will be sent to you once this funding becomes available.

'Supporting Children and Families Affected by a Family Member's Offending — A Practitioner's Guide'



This new document has recently been published, February 2017, by i-HOP. i-HOP, which is funded by the Department for Education and delivered by Barnardo's is a one-stop knowledge hub to support all professionals in working with the children and families of offenders, bringing together useful information in one place.

The i-HOP Practitioner's Guide is a comprehensive and practical resource aimed at all professionals who have direct contact with children and families, including social workers, teachers, pastoral staff, Early Years practitioners, health visitors, nurses, resettlement and prison-based family engagement workers, and more. The Appendices of the Guide are packed with resource lists and tools for direct work with children, and the contents page in the interactive digital copy includes hyperlinks to make it easy to navigate the wealth of resources available.

In addition to the above new resource, you can access a wealth of existing information and supporting resources by going through the portal for Early Years Practitioners on i-HOP's main [web page](#).

Listening as a Way of Life: Listening to Young Disabled Children

Listening to young children is essential in enabling their right to express their views on matters that affect them, and to have their views taken into account in a meaningful way. All children have an equal right to be listened to, an entitlement which includes babies and very young children, each with individual needs, capabilities and means of communicating. This [leaflet](#) includes inspiring examples of listening practice and significant updates on policy following the Children and Families Act, 2014.

Collaborations

Over 430 group settings now belong to an Early Years Collaboration, with more wishing to join. The first childminder collaboration has now also formed in Thanet. Those already in a collaboration find that sharing good practice and purchasing training more cost effectively are two of the main benefits. You can see a Collaboration Leader talk about the benefits of collaborations on [KELSI](#). If you think you may be interested in leading or joining a collaboration please email eycollaborations@kent.gov.uk.

Kent Children and Families Information Service

How can CFIS help you as a provider?

We can:

- Advertise your setting's details online, via email or through our advice line to families looking for childcare in your area
- Advertise an event your childcare setting is holding through our [Facebook](#) page
- Support all childcare providers no matter what the enquiry and offer advice, information and assistance whenever needed

If you need to contact us about any of the above please call 03000 41 23 23 or email us at kentcfis@kent.gov.uk

Training and Services from Threads of Success

Training Spaces

During our recent Threads evaluation, there were some comments around the quality of some in-house training environments which some settings have provided. Some of us have experienced training in cramped, poorly lit and uncomfortable locations where health and safety could be compromised. Even the best training course can fall flat if the environment is not conducive to learning. We will also be conducting a review of the training spaces we use when hiring external venues. However, when settings use their own venues, especially if inviting others to attend, please can you ensure you complete the [Venue Specification Form](#) on booking, as this form prompts the thinking around the key environmental considerations required for successful and engaging training. Lastly, if you need adult furniture to run a training session, you can use your Emporium Plus membership to hire these in (www.emporiumplus.co.uk).



Have you considered the Improvement and Achievement Award?

It is reported that there is a high correlation between settings taking part in the scheme and an improvement in Ofsted judgements.

“Strong leaders welcome challenge and advice. In 10 of the 11 (*Good or Outstanding*) settings visited, leaders valued and sought external scrutiny of their practice from advisers... and through quality assurance schemes”.
Getting it Right First Time (2013) Ofsted

Register now to start in September 2017...

The Improvement and Achievement Award is a quality improvement scheme which enables practitioners to evaluate and reflect on their own practice to bring about quality improvement in their own setting and thus improve outcomes for children and strengthen leadership for learning.

Entry to the Scheme:

- open to all registered Early Years and Childcare settings, including Out of School (except those judged Inadequate by Ofsted)
- through self-evaluation you will decide which one of the three levels is most suitable for your setting to undertake (Developing, Establishing or Enhancing)
- the award takes an academic year to complete and is awarded for a three year period. In order to remain accredited an annual monitoring visit must be undertaken to ensure that the improvement achieved is maintained.

Each setting is required to:

- undertake a piece of action research, including the use of a variety of audit tools
- complete a leadership for learning audit
- participate in network meetings with other award settings (three times a year).

Each setting has the option to:

- attend Sustained Shared Thinking training and embed into practice (Establishing and Enhancing levels only)
- complete a reflective journal to support their journey through the award.

Each setting will receive:

- dedicated and differentiated mentor support
- dedicated award training
- access to a range of resources and audit tools
- a celebration event to recognise achievement.

For more information or to join the Award please visit our [web page](#).

In order to remain accredited an annual monitoring visit must be undertaken to ensure that quality improvement is maintained. At the end of the three year accreditation period, settings will be given the opportunity to undertake the next level or re-accredit.

“It has been the most rewarding process and inspired staff to continue using the Threads of Success Award format to look at other areas and continue our journey to improve the setting”

Ladybirds Pre-School (2016)

Kent County Council's Annual Out of School Childcare Conference

Further to the update in the last Bulletin, we are pleased to advise that places at the Out of School Childcare Conference are filling up fast. We are keen to ensure that as many of Kent's practitioners working within Out of School childcare settings, Early Years settings offering wraparound care and school based Out of School childcare are able to attend, so we can share with you:

The Power of Play

"Inform me, support me and inspire me"

Supporting Children's Health, Fitness and Wellbeing

Kent County Council's 3rd Annual Out of School Childcare Conference

Saturday 10th June 2017, 9.30am to 4.30pm

Oakwood House, Maidstone

High quality play provision supports children's play and development and helps to raise their aspirations, making a valuable contribution to children's health, fitness and wellbeing. This year Kent County Council's Out of School Conference is strongly focused on the high profile national agenda, supporting children's health and wellbeing. Out of School settings provide a wide range of play opportunities which can build on children's interests and support this important aspect of children's lives. The conference will provide opportunities and ideas to enable delegates to enhance and thread this focus into Out of School settings. Delegates will also explore how a range of strategies can be introduced and look at how to remove barriers.

Inspirational key note speakers and a variety of hands-on interactive workshops will offer practical ideas for owners, managers and playworkers to develop their practice and support this important national agenda. Our keynote speakers are:

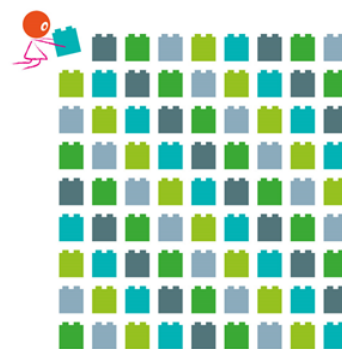
- Chris Cook – Olympic Swimmer who has represented Great Britain on over 30 occasions and is a well-known motivational speaker
- Ben Kingston-Hughes – Playwork Consultant and Manager for Inspired Children who is passionate about the power of play and its positive impact on children's health and wellbeing.

This conference is open to practitioners working within Out of School Childcare settings, Early Years settings and Childminders offering wraparound care and school based Out of School Childcare. Practitioners will be able to attend a maximum of two workshops on the day and can choose from:

- Inspire to Engage with Chris Cook
- Superhero Spectacular with Ben Kingston-Hughes
- Boisterous Play with Ben Kingston-Hughes
- A space to be me
- Music Matters!
- Communicate, Include, Engage

Practitioners will also have an opportunity to visit a range of market stalls offering advice, support and information to delegates.

To book your place visit CPD Online [EYC 17/105](#)



Are you keeping up to date with our training offer?

Did you know you can sign up for email alerts so you never miss the opportunity to book on one of our Early Years training courses?

Once logged in to your Kent CPD online account, go to **'My CPD online'** and choose **'update my email alerts'** you will then have the option to choose which events you would like to be notified of. Then just sit back and let us do the rest of the work.

<https://cpdonline.kentcpdonline.org.uk>



Coming soon...

Following requests from providers and our own analysis of Ofsted recommendations we are pleased to be able to shortly offer the following workshops:

Loose Parts – for Out of School and Early Years providers this three hour workshop will support practitioners and playworkers to gain an understanding of what 'Loose Parts' are and the theory behind them. A very practical workshop, you will get to play in order to explore and establish the benefits of offering Loose Parts and identify strategies to implement Loose Parts in your setting.

Technology – this three hour workshop will support Early Years practitioners to ensure that all children are gaining a wealth of knowledge whilst developing the sound technological skills needed for their next stages in learning and how working in partnership with parents will support their children's development at home. Practitioners will have the opportunity to explore a range of technological resources to support future planning in their setting.

EMPORIUM PLUS



a THREADS OF SUCCESS service

With the warmer weather and summer on its way, why not borrow some outdoor resources? We have over 3500 exciting resources including:

- Gardening kits for the little ones to get involved with including wheelbarrows and garden tools
- Forest school resources for outdoor fun
- Outdoor cooking resources including BBQs
- Community Playthings Out Last Blocks - great for outdoor construction. Our set comprises of two nursery sets and a set of ramps and the interlocking blocks, planks and steering wheels allow open ended play and empower the imagination.

Please visit our [website](#) for more information.

For regular updates and news on new stock please like and follow us on Facebook and Twitter:

	Follow us at: https://twitter.com/emporiumplus16		Follow us at: https://www.facebook.com/emporiumplus16/
---	---	---	---

Collaboration members get a 10% discount on Emporium Plus memberships.

Briefing and Networking Sessions

Our regular Briefing and Networking Sessions provide a good opportunity to keep your setting and staff up to date and to network with colleagues from other settings.

We run sessions for Early Years and Childcare settings and schools and also specifically for settings providing Out of School care including schools.

Delegates attending these sessions tell us that they have found them valuable, so why not book a place via [CPD Online](#) now.

EYC 17/005	06/06/17	Oakwood House	Maidstone
EYC 17/006	08/06/17	Swanley Banqueting	Swanley
EYC 17/007	13/06/17	Whitstable Castle & Gardens	Canterbury
EYC 17/008	15/06/17	Three Hills Sports Park	Folkestone

Agenda items will include:

- Update on the development of the Education Services Company
- Signs of Safety
- Threads of Success Review Update
- Early Years and Childcare Provider Association information



Contact Us

Threads of Success	www.ThreadsofSuccess.co.uk ThreadsofSuccess@kent.gov.uk
Sufficiency and Sustainability	Sufficiencyandsustainability@kent.gov.uk
Free for 2 (FF2) Team	Eyfreefor2@kent.gov.uk
30 Hours of Free Childcare	30HoursFreeChildcare@kent.gov.uk
Improvement and Standards	EYImprovementServices@kent.gov.uk
Equality and Inclusion	EYInclusion@kent.gov.uk
Collaborations	EYCollaborations@kent.gov.uk
Emporium Plus	Emporiumplus@kent.gov.uk
Workforce Development	Earlyyearsworkforce.ask@kent.gov.uk
Kent Children and Families Information Service	Kentcfis@kent.gov.uk
Management Information	eyfe@kent.gov.uk
KELSI	http://www.kelsi.org.uk
Schools e-bulletin	http://www.kelsi.org.uk/ working_in_education/news.aspx

The Early Years and Childcare Bulletin is compiled and edited by Kent County Council's Early Years and Childcare Service. The next issue will be published in term 6.