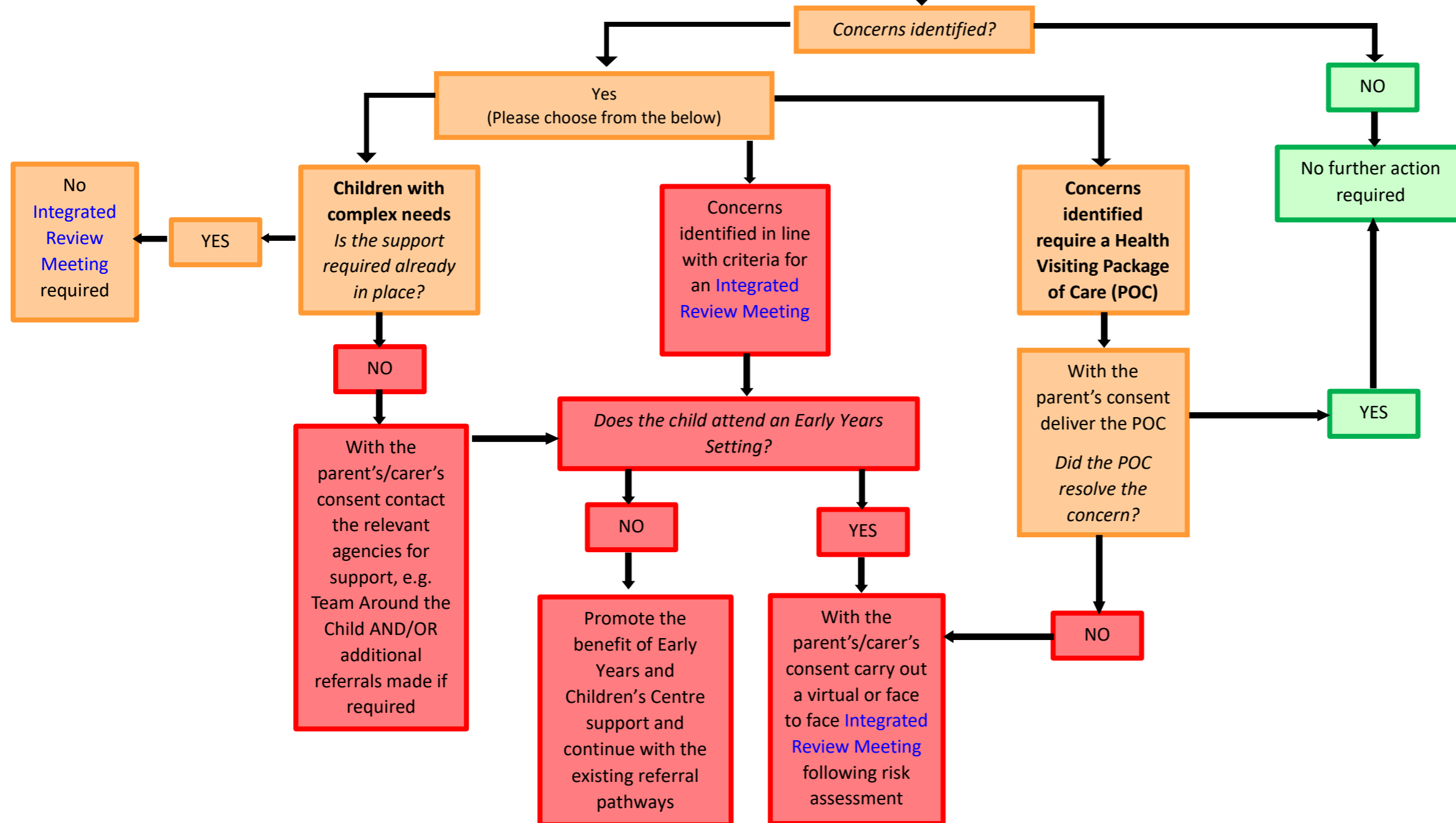


KENT'S INTEGRATED REVIEW AT TWO PROCESS HEALTH VISITING FLOW CHART*

Parents/carers are sent the ASQ-3 in the post prior to Health and Development Review

The Health and Development Review is undertaken using the ASQ 3 as close to age 2 as possible

If the review is undertaken face to face: Document the Health and Development Review in the handheld Personal Child Health Record (**Red Book**)
If the review is virtual: Health Visitor/CPHN/Community Nursery Nurse to request that the parent/carer completes the relevant page in the '**Red Book**' – with the agreed outcomes between HV/ CPHN/CNN and parent/carer. Staff should use their professional judgement and if any concerns raised should complete a face to face review



*In the event concerns are identified at the 9-12-month Health and Development Review, the Health Visiting Service will contact and inform the Early Years Setting.

Key: **GREEN PATHWAY** = Universal integrated approach; **AMBER PATHWAY** = concerns supported outside of Integrated Review Meeting; **RED PATHWAY** = Integrated Review Meeting