

Child Protection Newsletter

ISSUE NO. 76 Jan 2021

IN THIS ISSUE

- [Welcome](#)
- [The Education People](#)
- [Education Safeguarding Service](#)
- [Covid 19 advice & Support](#)
- [Operation Encompass](#)
- [Updates & Resources](#)
- [Early Years & Childcare](#)
- [Training](#)
- [Online Safety](#)
- [A Longer read-KCSIE 2021 changes](#)
- [Contacts](#)

Welcome

A happy new year to all and whilst 2020 has been a very different experience for each of us, we hope that 2021 is less eventful all for the right reasons. That being said, schools continue to have to do even more in the ongoing battle against Covid-19.

In this issue we include some of the standard sections but draw your attention to many links and resources related to young people's mental health; it has been a difficult 10 months for school aged children in the Kent area. Please use these resources and if you have any concerns about young people and are unsure of what to do, please call us.

In addition to this are the updates being put out for consultation for the updated KCSIE 2021 located at the end of this newsletter.

In all the articles below, we include links to external websites. These will be in [blue text](#) for you to click on so you can then read the full information regarding that topic. Please tell us if you have any issues with any of the links provided.

The Education People

[The Education People](#) provide services to support early years through to young adults with over 800 products and services available.

DSLs can register on the Education People website to receive an email when a new Safeguarding [blog post](#) is

added. If you are already registered, you can opt to add an email notification under your 'my account' settings.

Education Safeguarding Service (ESS)

We have recently updated our [safeguarding pages on The Education People Website](#) to act as a one-stop shop for DSLs. This is a replacement for our safeguarding section on Kelsi; both are in operation at this time, but the latter will be phased out.

The updated pages include information about the training and services we offer to educational settings, local information, including our policy templates, as well as links to national guidance and resources. Make sure you visit the site and bookmark it for your future reference!

Although safeguarding is a competitive market, we feel that we can provide training, assessments, and guidance unique to working within Kent that cannot be offered by other providers. If you are unable to find what you would like on this link please [contact us](#) and we can look at designing something bespoke for your setting.

We have revised the Desktop Safeguarding Review process in line with the current changes brought about by Covid-19 and social distancing. We can complete face to face reviews where it is safe to do so but we continue to offer remote alternatives.

Covid-19 Advice and Support

As the advice and situation remains ever changing we urge you to visit [Kelsi](#) and the [Education People website](#) on a regular basis, to keep up to date with news and changes. Our resources can now all be found on [the Education People website](#), including updates for 2021; this includes an updated addendum child protection policy template and remote learning considerations and guidance.

National guidance for education settings in response to Covid-19 continues to be updated and published on the [gov.uk](#) website. The [National Governors Association](#) (NGA) have updated their information on governance during this new lockdown period. Governor support will be sharing more information in their monthly newsletter, but the key areas that governing boards should be focusing on are:

- Risk management and safeguarding
- Wellbeing across the school community
- Providing continuity of education
- Managing resources

What has become apparent from the child protection service is that there has been an increased number of children moving into care proceedings over the last several months. As you know many of our most vulnerable children did not make it into school when they should have in the first Lockdown and this has continued, to varying degrees, for some children. When school is not being accessed by these children it

shines a light on those families who are not providing 'good enough' care. In extreme cases the situation is not safe for those children, so they have had to come into local authority care.

Sadly, this is likely to continue with the country in another Lockdown, although early indications are that many more children are accessing school this time around. We are aware that schools have tried their best to keep in touch with all families through ongoing contact and for those who are considered to be vulnerable, you will be hearing more over the next week as to how education and social care can work together in supporting each other in their statutory responsibilities. As always, if you have concerns about children from your school, please contact your [area safeguarding advisor](#) for support regarding the next steps.

As part of the support we offer we will continue to have termly DSL catch ups over Microsoft Teams in each area of the county. If you have not been invited to these please [contact](#) us. Those who have attended find these very useful and remind us all that we are not alone in this difficult task of keeping children safe.

Increasing data allowances on mobile devices to support disadvantaged children

A new scheme has been announced that temporarily increases data allowances for mobile phone users on certain networks so that children and young people can access remote education if their face-to-face education is disrupted. Schools can request mobile data increases for children and young people who:

- do not have fixed broadband at home
- cannot afford additional data for their devices
- are experiencing disruption to their face-to-face education

Further information about the scheme can be accessed [here](#). Additional government information regarding support with technology can be found [here](#).

Our services online safety advice regarding remote learning has been updated for [2021](#).

Operation Encompass

As you will be aware Covid-19 has led to a sizeable increase in domestic abuse being reported throughout the UK and with that, you as a setting, will have received an increased number of Operation Encompass notifications.

This is a just a reminder to you that if you believe there to be a social worker or early help worker involved in the family, please contact them when you get a notification. Not all notifications are deemed as high risk and they do not always get passed onto those teams so please pick up the phone or email our colleagues.

Updates and Resources

NSPCC Virtual Speak Out Stay Safe Assembly - now available across Term 3 and 4



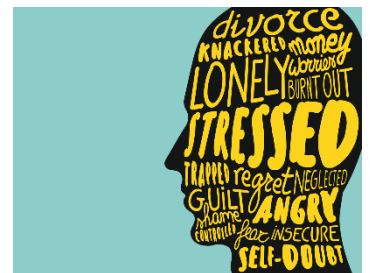
Sarah from NSPCC contacted us in ESS to thank all the schools for the high take up of the assemblies from the last newsletter. It has since been confirmed that they will be extending the offer across Term 3 and 4

“At the NSPCC we know that you are all doing your absolute best to keep all the children in your primary school safe and happy. Please know that your hard work is noticed and appreciated. Thank you. We are unable to visit you in school just now but want to support you in the usual way as best we can. Please take just half an hour to show our free NSPCC [Speak Out Stay Safe](#) assembly in your class bubbles, to reassure all children that they can always speak out to a trusted adult, including Childline. Originally our assemblies were due to be available for the Autumn term 2020, but I am delighted to confirm that we are extending our offer across Term 3 and 4 2021.

For more information and to access our assemblies and classroom resources please email Kent and Medway NSPCC Area Coordinator sarah.walker@nspcc.org.uk

Kent and Medway STP Suicide Prevention Programme Newsletter

The latest [Suicide Prevention Programme newsletter](#) focuses mainly on children and young people following the second meeting of the Kent and Medway Children and Young People Suicide and Self Harm Network which took place on Thursday 26 November.



In addition to this resource previous newsletters will have sections relating to support for our young people who are experiencing increased feelings of isolation, anxiety, stress, depression and suicidal ideation. Below are some services and guides:

- <https://youngminds.org.uk/find-help/>
- <https://giveusashout.org/>
- <https://www.bbc.co.uk/programmes/p04t6bc1>

It may not always be appropriate to make a referral or escalate a situation for every young person who expresses difficulties around their mental health, but we need to keep the conversation going in schools.

There is free training through the Kent Safeguarding Children Multi-agency Partnership at <https://www.kscmp.org.uk/whats-on> In particular [Youth suicide awareness and prevention training](#)

National Youth Agency - updated Covid-19 Guidance from 1 December 2020



The National Youth Agency has adjusted the [COVID-19 Guidance documentation](#) to reflect the new tier system and what this means for the youth sector. Also, on this page is the NYA Guidance Webinar.

Violence Reduction Unit (VRU)

The VRU have contracted [NurtureUK](#) to work with 10 schools across Kent & Medway to develop whole-school approaches to student self-esteem. It is intended that the raising of self-esteem, and an increased understanding between professionals and parents of the needs of young people, will lead to reductions in fixed term exclusions or managed moves between schools. Bespoke plans have been drawn up with each school about the delivery of the programme. This work is being aligned with the plans of Kent County Council's SEN commissioners and Virtual School Kent, who are also working with NurtureUK.

[Emerge](#) is a youth work charity, founded in 2016. They provide trained volunteer youth workers to support young people aged 10-25 who are attending A&E because of self-harming behaviour or suicidal ideation and support them for up to three months afterwards. They do not take the place of any NHS service, but offer time and emotional support while young people are in hospital and beyond.



They are in the process of building their support at Medway Maritime Hospital, but the team are there to support young people 7pm - 11pm Tuesday to Thursday over the phone at the hospital. If they are unable to support directly, they have access to lots of resources.

Tel: 07983 136215 or email at: hellomedway@emergeadvocacy.com

[Barnardo's](#) has launched a vital new support service which aims to make a positive difference to the lives of many Black, Asian and minority ethnic children, young people and their families impacted by Covid-19.



This is a [UK-wide helpline](#) which will focus on issues specifically affecting children, young people and families from Black, Asian and minority ethnic communities, who as we all know, have been hardest hit by the pandemic. The new service is a free telephone helpline and web chat facility for children, young people

and families from these communities who are suffering the long-lasting and wide-ranging impact of Covid-19. Barnardo's specialist advisors will aim to provide on-going support on a complex range of issues including mental health, bereavement, family break-down, neglect, back to school, parenting advice, counselling, family stress, discrimination, barriers to services and more.

The crucial on-going work they have done with [See, Hear, Respond, England](#) programme will provide a seamless route to this new helpline to wider locally-run support services up until August 2021.

Barnardo's cannot address these issues within the wider communities alone, and they are particularly keen to discuss with organisations already running support services, community programmes or helplines for children and young people how they can coordinate their services and make sure they reach as many of those who need support as possible.

They would hugely welcome your assistance with this initiative. Please do get in touch with them if you would like to discuss collaborative ways of supporting this new service, or if your colleagues could be involved from an operational point of view. If you require any further information on the helpline please do not hesitate to get in touch.

Church of England - Response to Safeguarding

The Government commissioned Independent Inquiry into Child Sexual Abuse (IICSA) as part of its work has criticised the Church of England for its failure to protect children from sexual abuse in the past. It also examined the effectiveness of current safeguarding arrangements.

In Kent the Diocese of Rochester consists of three main geographical areas, Medway, north and west Kent and the London boroughs of Bromley and Bexley

Within the Church of England the majority of safeguarding practise is undertaken locally within dioceses. Each diocese is responsible for supporting the safeguarding response of its parishes and other local church bodies. One of the ways this is done is through the Diocesan Safeguarding Team, consisting of Diocesan Safeguarding Advisers (DSAs), experienced safeguarding professionals who offer advice and support to parishes, and to whom all safeguarding concerns should be reported to.

The Rochester Diocese Safeguarding Team consists of three DSAs and a safeguarding administrator. The DSAs role is to coordinate the provision of safeguarding training, work with offenders and provide support to those who have suffered all forms of abuse, especially church related abuse. DSAs are responsible for advising the Diocesan Bishop and senior clergy on all safeguarding matters, including the referral of safeguarding concerns to statutory agencies. The team work closely with statutory

agencies and other external safeguarding partners, and actively strive to build good working relationships and support information sharing between such organisations.

Details of the Rochester Diocese Safeguarding Team can be found on the Diocese of Rochester website, please follow the link for contact information [Diocese of Rochester | Safeguarding \(rochester.anglican.org\)](https://www.dioceaserochester.org.uk/safeguarding).

Please contact the team in relation to any reports of church related abuse or any other safeguarding matters.

The Rochester Diocese Safeguarding team work closely with neighbouring Canterbury Diocese, which covers the rest of Kent, stretching from Maidstone to Thanet, the Isle of Sheppey and to the Romney Marsh.

Contact details for the Diocese of Canterbury safeguarding team can be found here, [Diocese of Canterbury | Safeguarding \(canterburydiocese.org\)](https://www.diocesecanterbury.org.uk/safeguarding).

In 2020, the Safe Spaces support service was launched. Safe Spaces is a free and independent support service for anyone who believes they have experienced church related abuse of any form in relation to the Church of England, Church in Wales or the Catholic Church in England and Wales. Although funded by these national church institutions Safe Spaces is run independently by the charity Victim Support. It is free to access via telephone - 0300 303 1056 (answerphone available outside of opening times), email - safespaces@victimsupport.org, or web-chat via the website www.safespacesenglandandwales.org.uk/

Early Years and Childcare

Ofsted will carry out a [programme of assurance inspections](#) from the start of the spring term. These inspections will confirm whether or not a provider is meeting the [early years foundation stage \(EYFS\) requirements](#).

Assurance inspections will be proportionate and risk based. Providers will be prioritised based on the length of time since their last inspection, and any other relevant information.

Routine graded inspections will resume in the summer term of 2021.

TEP Safeguarding Training



Due to current Covid-19 restrictions all Designated Safeguarding Lead training for schools and early years delivered by ESS has been moved to virtual training via Zoom and can be booked online.

If you are already a DSL please do not book onto the Zoom courses; please access the interim DSL Refresher [eLearning courses](#) for schools (EL 20/025) and early years settings (EL 20/030). These comprehensive courses will act as an interim measure and will enable existing lead DSLs and Deputy DSLs in Schools and settings to refresh their knowledge and skills in line with 'Keeping Children Safe in Education' 2020 and the EYFS. The eLearning refresher courses should take approximately 4-5 hours to complete, but progress can be bookmarked so you can complete it at your own pace.

Whole School Training Pack for DSLs

Our Whole School Safeguarding Training Pack is still available for purchase on the [Education People website](#). The pack is entirely optional but will assist trained DSLs to deliver up-to-date and Kent specific staff training within their own school.

In the next few months, we aim to publish an Early Years focused DSL training pack as well as a supplementary online safety training pack for DSLs in schools.

New Online Safety eLearning Courses for Early Years Settings

The team are delighted to announce that we have developed two new eLearning courses specifically for Early Years settings to support them in developing their online safety understanding and practice.

Online safety forms part of early years setting's wider safeguarding responsibilities; it is important that all staff can recognise, respond to and refer online safety concerns and that managers and EYDSLs are aware of their strategic safeguarding responsibilities, in order to safeguard children in their care. The courses have been developed in line with the EYFS and the non-statutory [UKCIS early years guidance](#).

- [Strategic Online Safeguarding for Early Years Designated Safeguarding Leads and Managers](#) - suitable for Early Years managers and DSLs in Early Years Settings
- [Basic Online Safeguarding for Early Years Practitioners](#) - suitable for any staff working within an early years setting

Updated UKCIS Guidance: 'Sharing nudes and semi-nudes: advice for education settings working with children and young people'



The UK Council for Internet Safety (UKCIS) Education group have published [updated guidance for education settings](#) regarding 'nude and semi-nude' image sharing – previously known as 'sexting' or 'youth produced sexual imagery'.

We would urge all DSLs working in all education settings to access this updated guidance which includes both new and updated guidance on:

- risk assessing incidents
- safeguarding and supporting children and young people
- handling devices and imagery
- recording incidents, including the role of other agencies
- providing education on the sharing of nudes and semi-nudes

New Range of 360 Online Safety Self-Review Tools launched by the SWGfL



SWGfL have launched a new range of 360 Online Safety Self-Review tools for non-school settings. Many Kent schools already use the free ["360 degree safe" tools](#) to review and improve their online safety policy and practice. The new suite of tools focus on non-school settings that work directly with children, including: Early Years, as well as, breakfast clubs, holiday schemes, youth groups and sports clubs.

In September SWGfL launched ["360 Early Years"](#) with a clear focus on the review of policy and practice in settings for pre-school children, which allows the setting to judge itself against 4 level statements. The latest ["360 Groups"](#) tool has the same features as the Early Years tool, but the review and content focusses on a wider range of groups that work with children and young people of school age.

Safer Internet Day 2021



[Safer Internet Day](#) will be celebrated on 9th February 2021, with the theme: *'An internet we trust; exploring reliability in the online world'*.

The campaign focuses on how we decide what to trust online and explores how influence, persuasion and manipulation can impact young people's decisions, opinions and what they share online. It also looks at the emotional impact of navigating a misleading

online world and the importance of creating a supportive, critical, questioning culture, and giving young people the skills to spot misleading content and support one another online.

To help educators to deliver practical and impactful activities for Safer Internet Day the UK Safer Internet Centre (UKSIC) have created a [range of free resources](#), including films, lesson plans, assemblies, quick activities and more!

UKCIS have also a [parent/carers pack](#) which includes activities, conversation starters and information to help parents and carers talk to their children at home about how to navigate the issue of reliability of information online in a safe, responsible and engaging way.

A Longer Read – Consultation on proposed changes to KCSIE for 2021

The DFE are seeking views on the proposed changes to Keeping Children Safe in Education, with a view to making changes for September 2021. The consultation closes on 4th March 2021 and can be found [here](#).

Summary of guidance

- There has been some argument that the detail contained in Part One is excessive for staff who do not work directly with children; e.g.; caterers and cleaners and a feeling that it obscures the basic message: if you see something say something.

Annex A would provide a shortened version of Part One for staff in this category. Governing bodies are given freedom to choose the shortened version.

NB: Throughout the document some paragraphs have been moved into different sections to improve the flow of the document.

Section One – safeguarding information for all staff

- Greater emphasis on children’s welfare and updated to make it clear that measures to prevent bullying, including cyberbullying should be included in behaviour policies.
- Online safety embedded and referenced throughout the document together with online abuse occurring concurrently with face to face
- list provided, based on safeguarding priorities, to include other factors which may indicate that a child may potentially benefit from early help.
- Definition of ‘sexting’ updated: e.g. sharing nudes and semi-nudes images and or videos (also known as sexting or youth produced sexual imagery).
- Greater emphasis on staff raising concerns if they have them

Section Two – management of safeguarding

- New signposting of guidance for school/colleges who are charities
- New context provided for *whole school approach to safeguarding*
- Clarity provided around CP policy needing to contain policies

- Updated to make it clear that schools and colleges have powers to hold and use information as well as share it.
- Governing bodies and proprietors should ensure that, as part of the requirement for staff to undergo regularly updated safeguarding training, including online safety (paragraph 101) and the requirement to ensure children are taught about safeguarding, including online safety (paragraph 106), that safeguarding training for staff, including online safety training, is integrated, aligned and considered as part of the whole school or college safeguarding approach.
- New paragraph highlighting the vulnerability of children within Approved Provision
- Greater recognition of those children potentially at greater risk of harm, ie: special educational needs, CME

Part Three - Safer Recruitment

Significant changes made to the structure of Part three. This is to improve the readability of this part and to provide further guidance about how schools and colleges should carry out safer recruitment checks that build on and are not overly reliant on DBS checking. We suggest relevant staff read the whole section.

Part Four - Allegations of abuse made against teachers, including supply teachers, other staff, volunteers and contractors

Significant changes to the structure of Part four. This is to improve the readability of this part and provide a more logical flow to the guidance - no changes to statutory requirements

Part Five - Child on Child sexual violence and harassment

- Reference to 'alleged perpetrator' replaced with 'alleged perpetrators' and considerations on keeping any victims and perpetrators apart
- Added further guidance to emphasise the importance of the initial response to the report and highlight that for some children they may find it difficult to make a direct report.
- Added link to more information on harmful sexual behaviours, and reference to the [National Organisation for the Treatment of Abusers](#) (NOTA) which provides support for professionals.

Annex A - New condensed version of Part One

Annex B - contains important additional information about specific forms of abuse and safeguarding issues:

- Domestic Abuse: can impact on children when they witness it at home and/or suffer it in an intimate personal relationship.
- Child abduction and community safety incidents: new section
- Preventing Radicalisation: Additional information provided on what terrorism looks like and more information on Channel.

Annex C - Consulting on a series of proposed changes, especially with regard to CIN. Final version of KCSIE 2021 will be clear which changes we have made.

Annex D - Online safety - majority of information now moved to Part Two.

Further information can be found [here](#).

Finally, if you have any questions on the articles, or the need for safeguarding advice, please contact the team using the details provided.

This safeguarding newsletter is published by the Education Safeguarding Service and issued to schools, early years providers and local authority staff. For this newsletter to be effective, please ensure that it is shared with staff, including all Designated Safeguarding Leads.

Head Office: Room 2.30 Sessions House County Hall Maidstone ME14 1XQ	
Claire Ray Head of Service	03000 415788
Rebecca Avery Training & Development Manager	03000 418707
Online Safety	03000 415797
<p>For advice on safeguarding issues please call your area office on the numbers listed below. If a child may be at risk of imminent harm you should call the Integrated Front Door on 03000 411111 or the Police on 999</p>	
Ashford	03000 415648
Canterbury	03000 418503
Dartford	03000 412445
Dover	03000 415648
Folkestone & Hythe	03000 415648
Gravesham	03000 412445
Maidstone	03000 412284
Sevenoaks	03000 412445
Swale	03000 418503
Thanet	03000 418503
Tonbridge & Malling	03000 412284
Tunbridge Wells	03000 412284

Local Authority Contacts

Integrated Front Door: 03000 411111 (outside office hours 03000 419191)

Early Help Contacts (district teams) can be found on www.kelsi.org.uk

Local Authority Designated Officer Contacts

If a call is urgent i.e. **a child is in immediate danger**, and the call cannot go through to the officer on Duty, the call should go through to the Integrated Front Door on 03000 411111

Calls for child protection training, querying procedures and policies or general child protection concerns should be transferred to the appropriate Area Safeguarding Advisor.

LADO Team contact number: 03000 410888

Now it's just one number for the whole LADO Team covering Kent Local Authority

Email: kentchildrenslado@kent.gov.uk

Kroner House, Eurogate Business Park, Ashford, Kent, TN24 8XU

Area Education Officers

South Kent - Celia Buxton 03000 414989

East Kent - Marisa White 03000 418794

West Kent - Nicholas Abrahams 03000 412209

North Kent - Ian Watts 03000 414302