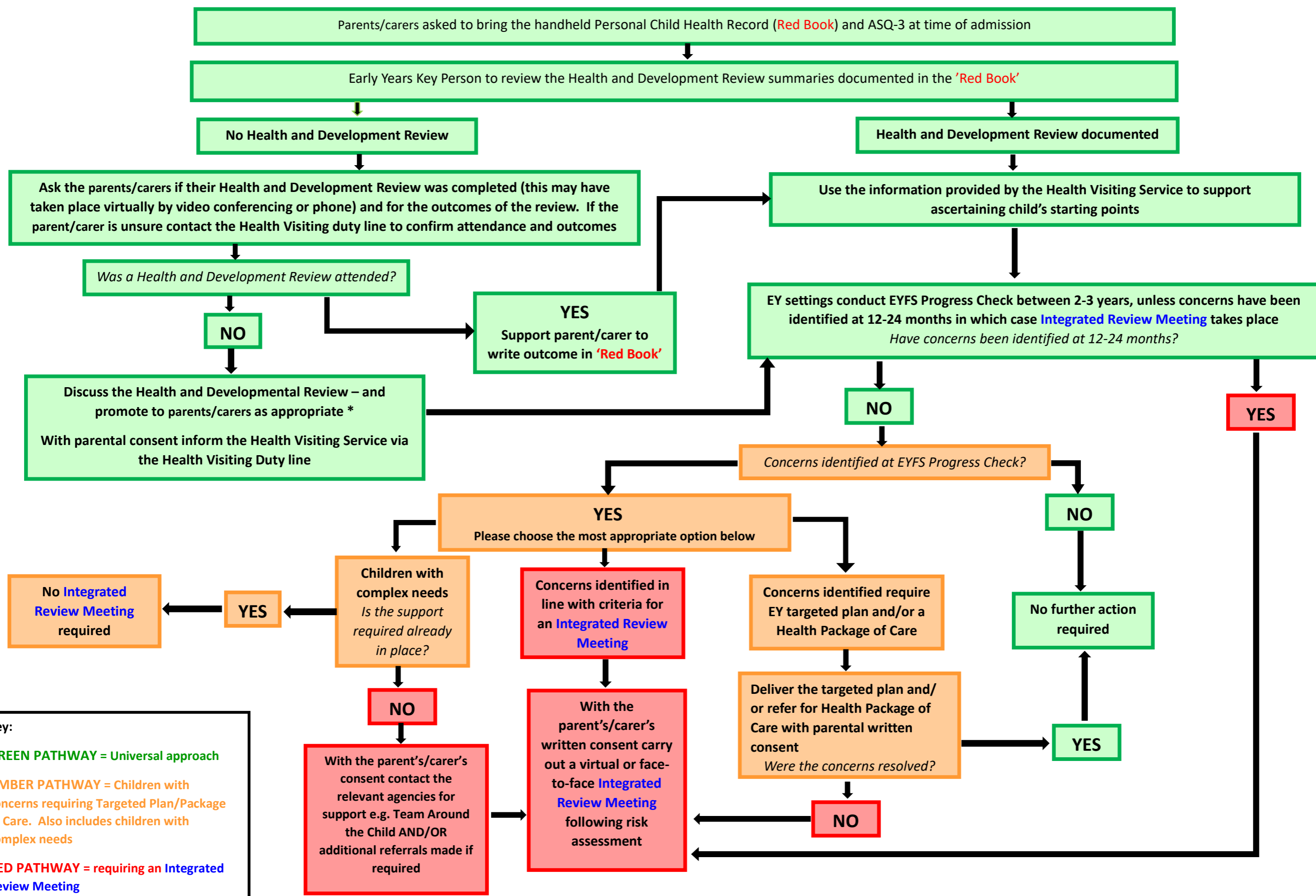


# KENT'S INTEGRATED REVIEW AT TWO PROCESS EARLY YEARS FLOW CHART



**Key:**

- GREEN PATHWAY = Universal approach**
- AMBER PATHWAY = Children with concerns requiring Targeted Plan/Package of Care. Also includes children with complex needs**
- RED PATHWAY = requiring an Integrated Review Meeting**

\* promote to parents/carers where the child has a concern which can be supported/ explored further by the Health Visiting ASQ review, or families who did not opt to miss their appointment (i.e. did not attend due to moving)