

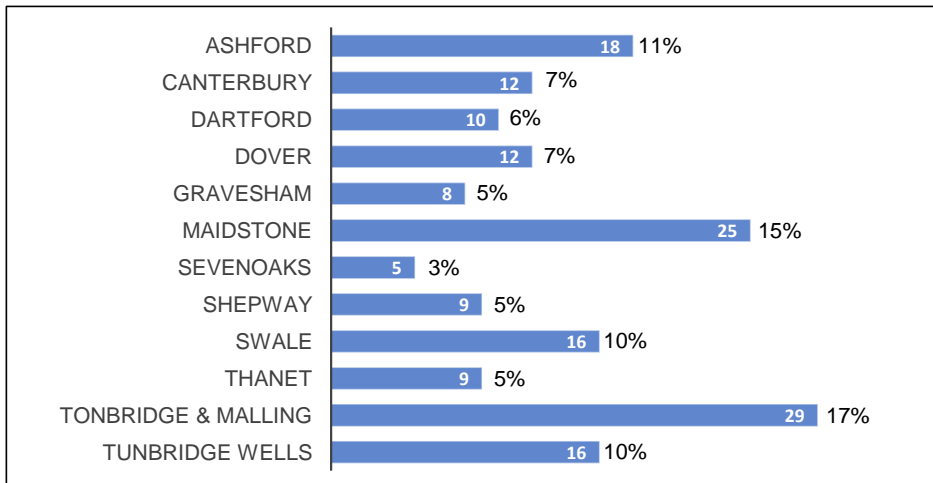
School Funding Formula Consultation

Summary of Responses - All Responses

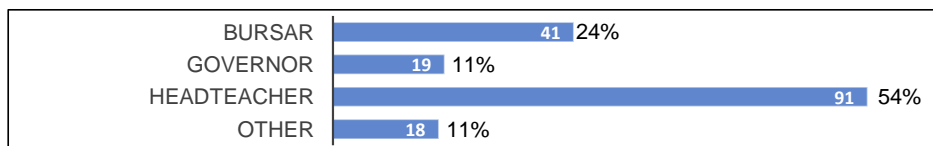
Number of Responses

Primary	101	60%
Secondary	60	36%
Special	8	5%
Total	169	100%

Responses by District



Responses by Role



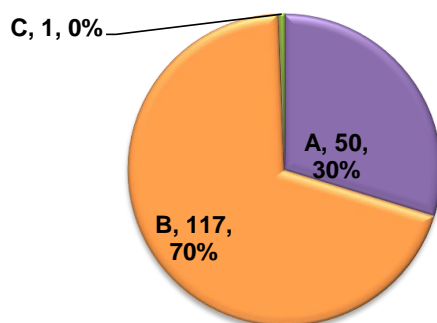
Question:Q2. In 2017, schools told us through our continuation that they supported a general principle that “our Local Funding Formula should start moving towards the NFF, and at the same time continue to utilise local flexibility to address areas of local concern”.

It has been two years since we agreed our principle, and we now want to understand through the first question of this consultation whether we should continue to adopt this principle, all the time we have the ability to do so under a soft NFF arrangement.

A) Fully implement the NFF as soon as possible? (This would mean we would be unable to address local areas of concern).

B) Take further steps towards the NFF, and also take into consideration local areas of concern? (For example, continue to provide a higher lump sum which offers protection to our smaller primary schools)

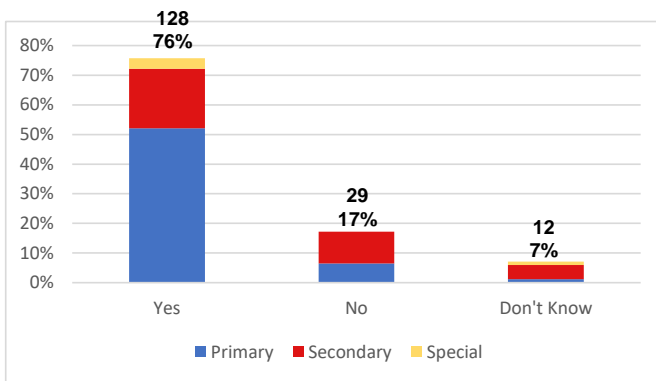
C) Don't know



	A	B	C
Primary	17	84	0
Secondary	33	27	0
Special	0	6	1
Total	50	117	1

	A	B	C
Primary	10%	50%	0%
Secondary	20%	16%	0%
Special	0%	4%	0%
Total	30%	70%	0%

Question:Q3. In 2020-21 we are proposing to maintain the primary schools' lump sum at £120,000 per school (excluding area cost adjustment) to continue to offer a degree of protection to our smallest primary schools. This is a local area of concern for KCC.



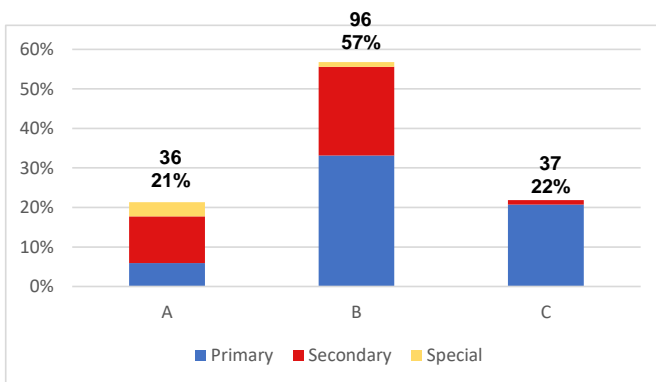
	Yes	No	Don't Know
Primary	88	11	2
Secondary	34	18	8
Special	6	0	2
Total	128	29	12

	Yes	No	Don't Know
Primary	52%	7%	1%
Secondary	20%	11%	5%
Special	4%	0%	1%
Total	76%	17%	7%

Question:Q4. In relation to the secondary schools' lump sum we can maintain the lump sum at £120,000 or lower it to the new NFF lump sum. We believe the difference between the two, alongside the other proposals within this consultation, is not material.

The DfE allow local authorities to have a different lump sum between phases. So in relation to the secondary schools' lump sum, we are interested in your views

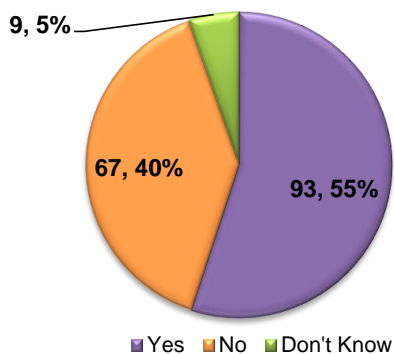
- A) Maintain the secondary schools' lump sum at £120,000 (before area cost adjustment)
- B) Lower the secondary schools' lump sum to the NFF rate (estimated at £114,400 before area cost adjustment).
- C) Don't know



	A	B	C
Primary	10	56	35
Secondary	20	38	2
Special	6	2	0
Total	36	96	37

	A	B	C
Primary	6%	33%	21%
Secondary	12%	22%	1%
Special	4%	1%	0%
Total	21%	57%	22%

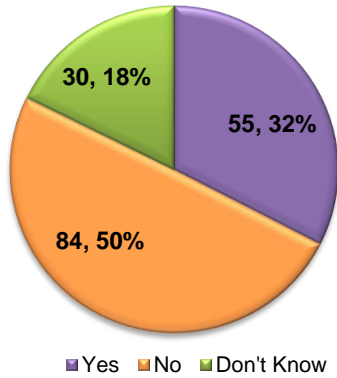
Question:Q5. Do you support the one-off transfer of 1% (approximately £9.6m) from the Schools Block to the High Needs Block for 2020-21, to be used to incentivise mainstream schools to take a greater proportion of children and young people with Education Health and Care Plans (EHCPs)?



	Yes	No	Don't Know
Primary	65	32	4
Secondary	23	33	4
Special	5	2	1
Total	93	67	9

	Yes	No	Don't Know
Primary	38%	19%	2%
Secondary	14%	20%	2%
Special	3%	1%	1%
Total	55%	40%	5%

Question:Q7. Should KCC consider introducing a falling roll fund from 1 April 2020? This would mean top-slicing a small proportion of the Schools' Block funding to support this fund.

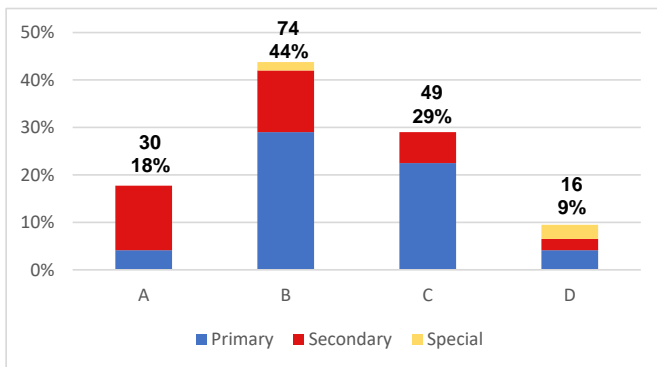


	Yes	No	Don't Know
Primary	39	41	21
Secondary	15	38	7
Special	1	5	2
Total	55	84	30

	Yes	No	Don't Know
Primary	23%	24%	12%
Secondary	9%	22%	4%
Special	1%	3%	1%
Total	32%	50%	18%

Question:Q8. If there is support from schools to address local areas of concern, KCC would like to understand which of the following scenarios schools prefer.

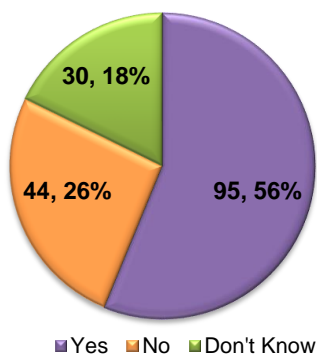
- A) I do not support addressing local areas of concern
- B) Scenario 2 – fully implementing the MfLs at the NFF rates and spread the cost of the local areas of concern across the Additional Educational Needs factors within the Local Funding Formula
- C) Scenario 3 – spread the cost of the areas of local concern across all schools.
- D) Don't know



	A	B	C	D
Primary	7	49	38	7
Secondary	23	22	11	4
Special	0	3	0	5
Total	30	74	49	16

	A	B	C	D
Primary	4%	29%	22%	4%
Secondary	14%	13%	7%	2%
Special	0%	2%	0%	3%
Total	18%	44%	29%	9%

Question:Q9. Do you support the introduction of the mobility factor into the Local Funding Formula from 1 April 2020 (based on us adopting the same methodology as the DfE have set for the NFF – this should be cost neutral, i.e. the funding we receive for mobility will be passed onto eligible schools)?



	Yes	No	Don't Know
Primary	55	26	20
Secondary	35	15	10
Special	5	3	0
Total	95	44	30

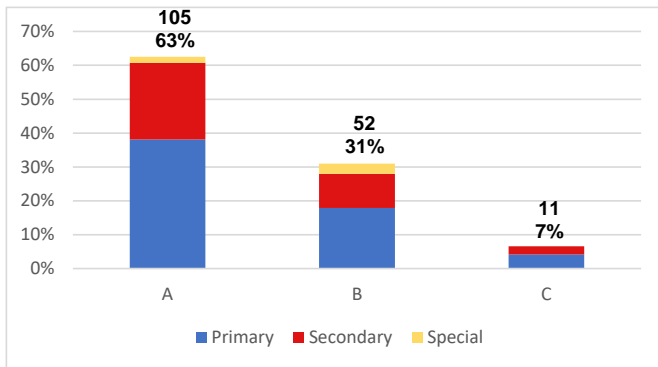
	Yes	No	Don't Know
Primary	33%	15%	12%
Secondary	21%	9%	6%
Special	3%	2%	0%
Total	56%	26%	18%

Question:Q10. What percentage should we set the Minimum Funding Guarantee (MFG) for 2020-21?

A) 0.5% - this would ensure those schools who remain on the MFG receive at least a 0.5% increase per pupil, which would be lower than the Government's estimate for inflation and would therefore mean a further erosion of their historic higher funding level.

B) 1.84% - this would ensure those schools who remain on the MFG receive at least a 1.84% increase per pupil which is the Government's estimate of inflation in 2020-21. This option would cost more than option a) above.

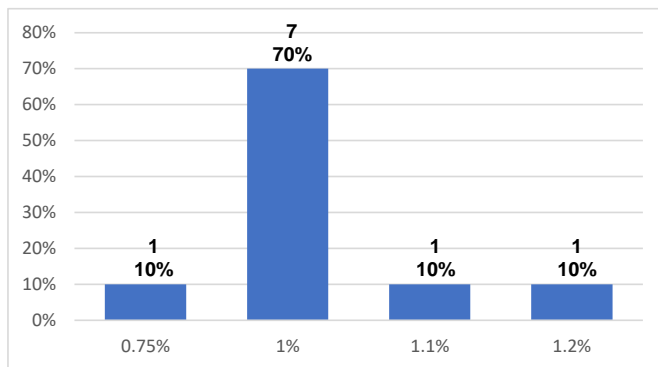
C) Something different but between 0.5% and 1.84% - please specify the percentage in the box below:



	A	B	C
Primary	64	30	7
Secondary	38	17	4
Special	3	5	0
Total	105	52	11

	A	B	C
Primary	38%	18%	4%
Secondary	23%	10%	2%
Special	2%	3%	0%
Total	63%	31%	7%

C) Something different but between 0.5% and 1.84% illustrated below



	0.75%	1%	1.1%	1.2%
Responses	1	7	1	1
	10%	70%	10%	10%