

SEND Reflection Tool

For Early Years Group Settings

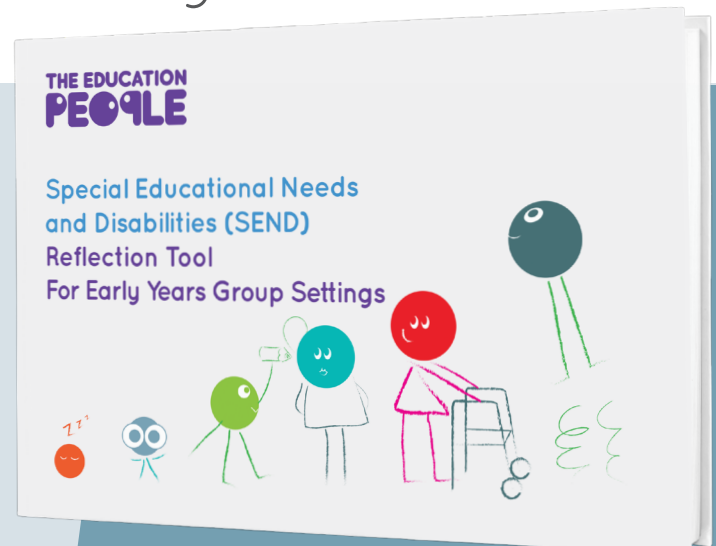
Are you looking to strengthen your team's SEND knowledge, practice and the provision you provide for children and their families?

The **SEND Reflection Tool** has six sections:

- Leading SEND Practice
- Whole Team Approach
- Working with Children and Families
- Assessment, Early Identification and Support
- Effective Use of Funding and Resources
- The Local Offer.

The aspiration to support every child with SEND to have the best possible start in life lies at the heart of the Early Years Foundation Stage (EYFS) (2021), the SEND Code of Practice (2015) and the Kent County Council (KCC) SEND Inclusion Strategy (2021). The **SEND Reflection Tool** can support you to achieve this.

Request a copy using the online Early Years Equality & Inclusion Team Request Form or email eyinclusion@theeducationpeople.org



Feedback from Settings:

“ A good tool for self-reflection. It has helped to build the whole team knowledge of SEN and will improve standards going forward. ”

“ This was an easy-to-read document with no long winded jargon, so simple to use and follow without feeling too overwhelmed. ”

“ Do it! It really helps to highlight things you maybe don't understand or do enough of, all of which you can get support for to make your setting a more supportive setting for your children and families and give staff more knowledge. ”