

FFT Governor Dashboard



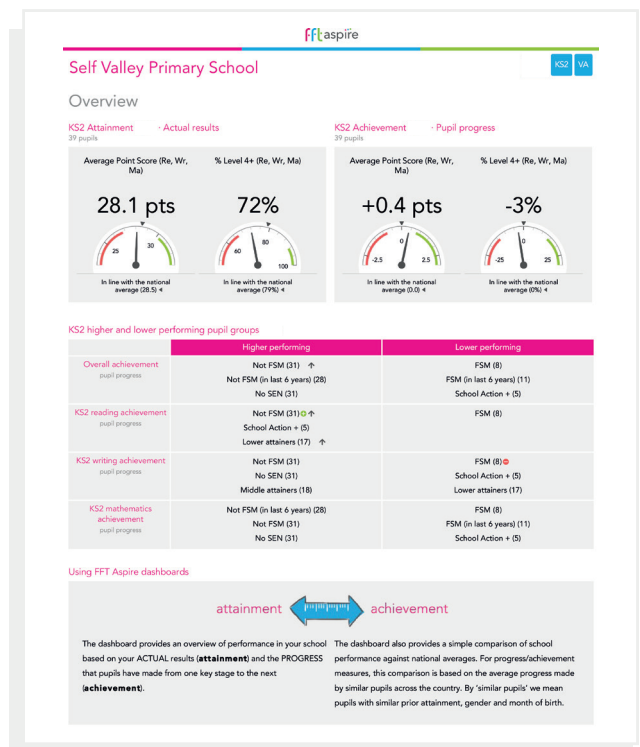
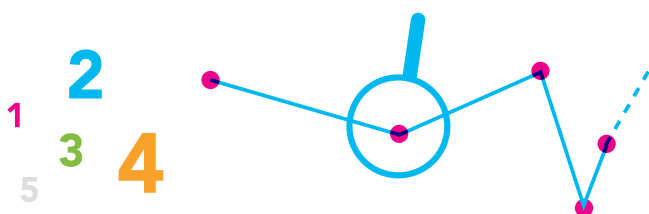
The FFT Governor Dashboard, developed in partnership with the National Governors' Association and the Wellcome Trust, provides a range of information to help governors support and challenge the school leadership team.

The Governor Dashboard, now available in FFT Aspire, clearly displays information about results and pupil progress, subject performance, progress of pupil groups, attendance and school context. Using our platform each school's performance can be viewed instantly, flagging up issues that governors can investigate.

The Dashboard will also help governors get to grips with government's new Attainment 8 measure, and from 2016 dashboards will also include Progress 8 analysis.

'Inspectors will expect governors to know about the strengths and weaknesses of the school. Inspectors will expect school governors to be familiar with, and understand, performance data.'
Ofsted Inspection Handbook, January 2014.

The Governor Dashboard was developed by governors for governors because we wanted to focus our design on presenting complex information in a way that would be clear and meaningful to you.



"Ofsted expects that at least one person on the governing body has in depth knowledge about the school's performance, but inspectors will be impressed by the fact that any governor can pull this out of their pocket and say 'I know and understand how my school is doing because I've seen this and it tells me.'"

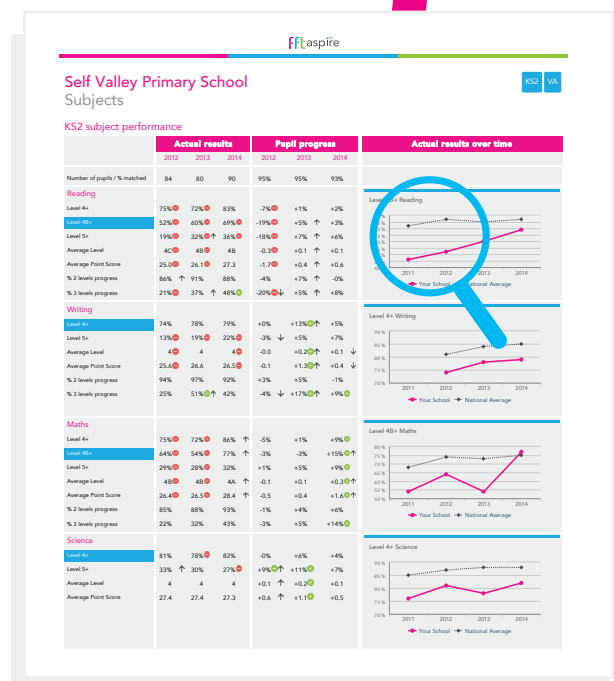
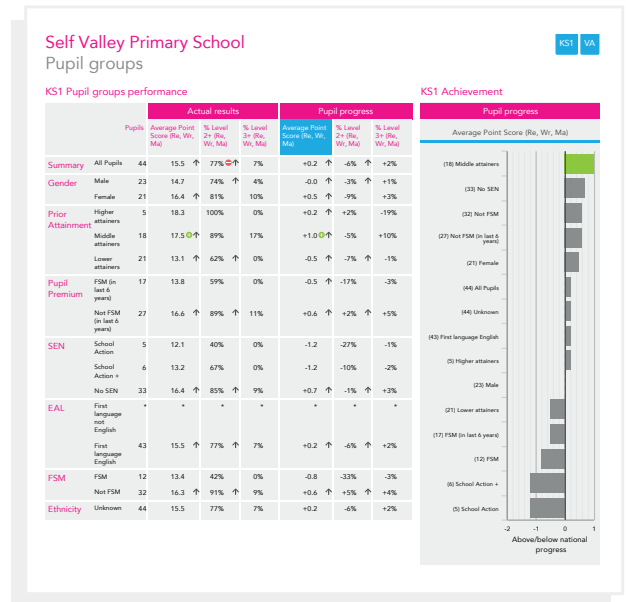
Emma Knights, Chief Executive of the National Governors' Association

All subscribing schools can download the Governor Dashboard from FFT Aspire, and share it easily with governors. Alternatively, governors can be provided with their own account, giving access to not only the Governor Dashboard but also a range of other information to aid their 'support and challenge' role. The new Aspire system has also been enhanced to include overviews of all key stages, providing a wealth of information in an accessible format.



"The dashboard has been effective in simplifying the nightmarishly complicated data we used to rely upon from other sources. It is a ready resource for all governors to monitor the performance of the school in a structured and productive way. Hopefully this will result in improved performance across the school in years to come. I would definitely recommend the Governor Dashboard to other schools."

Matthew Lord, Chair of Governors,
Comberbach Primary School



Free Governor Dashboard E-learning modules

Our free e-learning modules, recognised at the national E-learning Awards and Fresh Awards in 2014, are currently being updated to help you get the most out of your new FFT Aspire Governor Dashboard. These modules also help you interpret your data and support the raising of standards in your school. A certificate will be available to you on completion of each module.

Please email hello@fft.org.uk to register your interest in the e-learning modules.

Governor Dashboard video

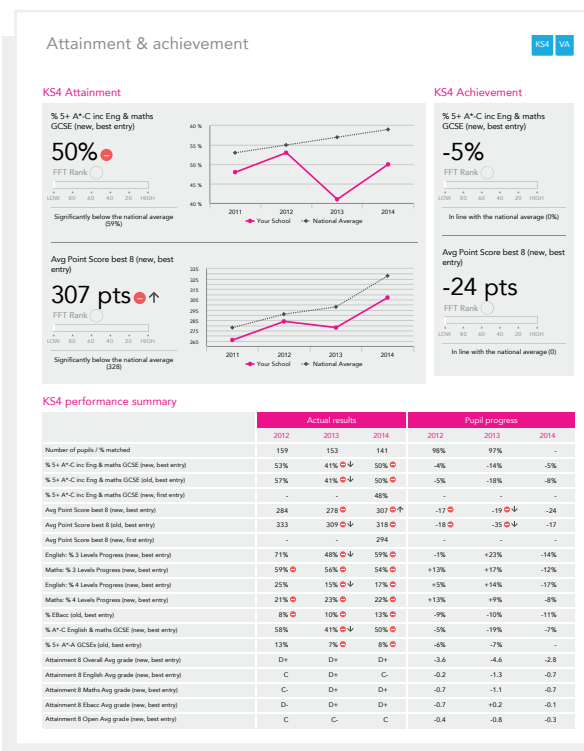
A video explaining how the FFT Governor Dashboard can be used by governors to drive school improvement is available to view on the National Governors' Association website. Alternatively it can be viewed on YouTube.

Downloadable resources

Training guides and overview presentations are downloadable from the FFT website.

Webinars

FFT regularly hold free online webinars. Each webinar will consist of an overview of a topic, with the opportunity to ask questions and get answers from the presenter and the webinar host. The presenter will be a specialist in the topic covered. Find out more from the FFT website, www.fft.org.uk.



Independent Research from Education Datalab

Access the latest quantitative research from Education Datalab, who are supported by FFT. Visit www.fft.org.uk and choose research from the top menu bar.



Monthly e-bulletins

FFT has a monthly Governor e-bulletin that will keep you informed of our events, training, briefing sessions, news, data releases and new research. To be added on to the distribution list please email hello@fft.org.uk.

Telephone and email support

Any questions, please just ask. We're always happy to help and to provide support by email or telephone: [01446 776262](tel:01446776262) | hello@fft.org.uk

Social media

FFT has active Twitter and LinkedIn sites that will keep you aware of education news, data releases, updates and FFT research.



www.fft.org.uk |  [@FFTEdu](https://twitter.com/FFTEdu)