

# School Workforce Census

## Autumn 2014

Based on 422 KCC schools as at Nov 14 Census Date  
358 Primary, 41 (inc 11 PRUs) Secondary and 23 Special

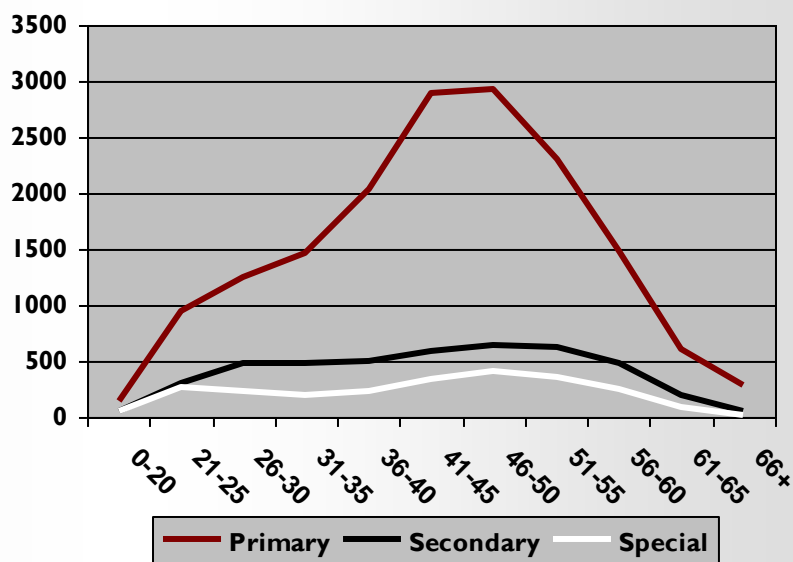
# School Workforce Census Nov 2014 Totals

## Headcount by School Type and Job Group

	Primary	Secondary	Special	Total
Teaching	5,329	2,060	601	7,990
Non Teaching	9,642	1,724	1,892	13,258
<b>Total</b>	<b>14,971</b>	<b>3,784</b>	<b>2,493</b>	<b>21,248</b>

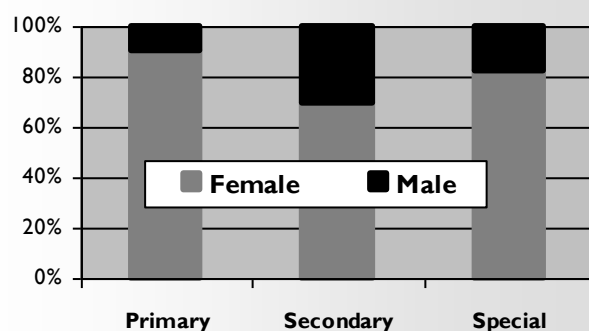
## Headcount by School Type and Age

Age Group	Primary	Secondary	Special	Total
0-20	118	33	45	196
21-25	922	263	271	1,456
26-30	1,189	416	218	1,823
31-35	1,396	451	210	2,057
36-40	1,772	406	238	2,416
41-45	2,623	524	327	3,474
46-50	2,654	570	422	3,646
51-55	2,082	517	363	2,962
56-60	1,454	393	268	2,115
61-65	520	165	105	790
66+	241	46	26	313
<b>Total</b>	<b>14,971</b>	<b>3,784</b>	<b>2,493</b>	<b>21,248</b>



## Headcount by School Type and Gender

	Primary	Secondary	Special	Total
Female	13,586	2,633	2,056	18,275
Male	1,385	1,148	437	2,970
Not Specified	0	3	0	3
<b>Total</b>	<b>14,971</b>	<b>3,784</b>	<b>2,493</b>	<b>21,248</b>



## Sickness Totals by Job group

Sickness period is Sep 2013 – Aug 2014

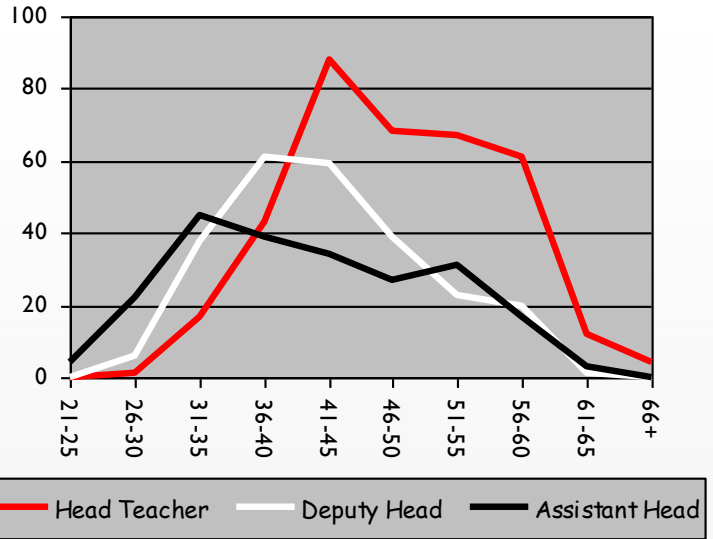
Note : DfE criteria is that Sickness data collection in the SWC is not mandatory for Support Staff and absence is included for contracts that ended before Nov 14 census date

	Teaching Staff	Support Staff	Total
Number of Staff current as at 6th Nov 2014	7,990	13,258	21,248
Total Sick days Sep 13 - Aug 14	33,454	44,239	77,693

# Age Profile - Leadership by Phase

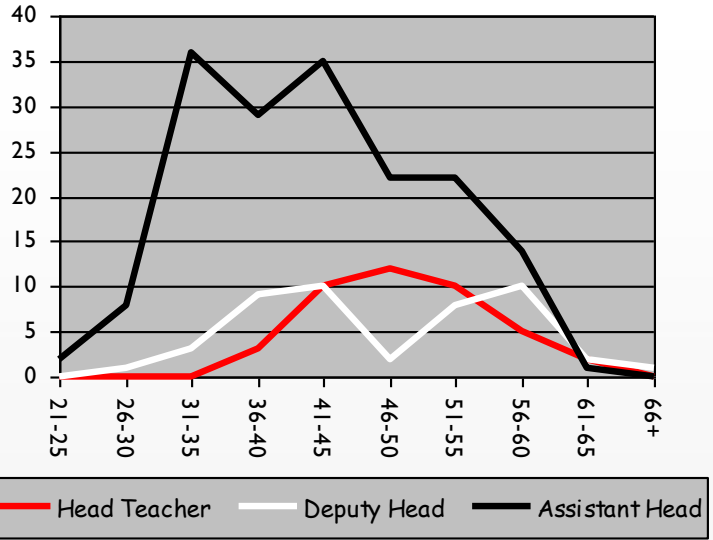
## Primary

Age Group	Head Teacher	Deputy Head	Assistant Head	Total
21-25	0	0	4	4
26-30	1	6	22	29
31-35	17	38	45	100
36-40	43	61	39	143
41-45	88	59	34	181
46-50	68	39	27	134
51-55	67	23	31	121
56-60	61	20	17	98
61-65	12	1	3	16
66+	4	0	0	4
<b>Total</b>	<b>361</b>	<b>247</b>	<b>222</b>	<b>830</b>



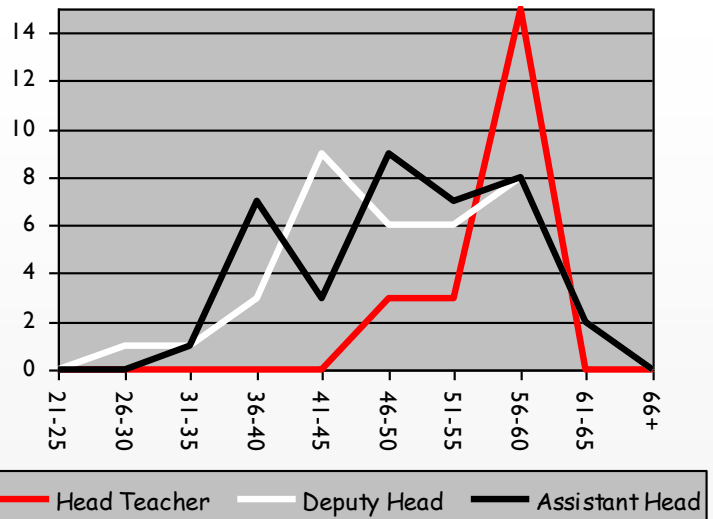
## Secondary

Age Group	Head Teacher	Deputy Head	Assistant Head	Total
21-25	0	0	2	2
26-30	0	1	8	9
31-35	0	3	36	39
36-40	3	9	29	41
41-45	10	10	35	55
46-50	12	2	22	36
51-55	10	8	22	40
56-60	5	10	14	29
61-65	2	2	1	5
66+	0	1	0	1
<b>Total</b>	<b>42</b>	<b>46</b>	<b>169</b>	<b>257</b>



## Special

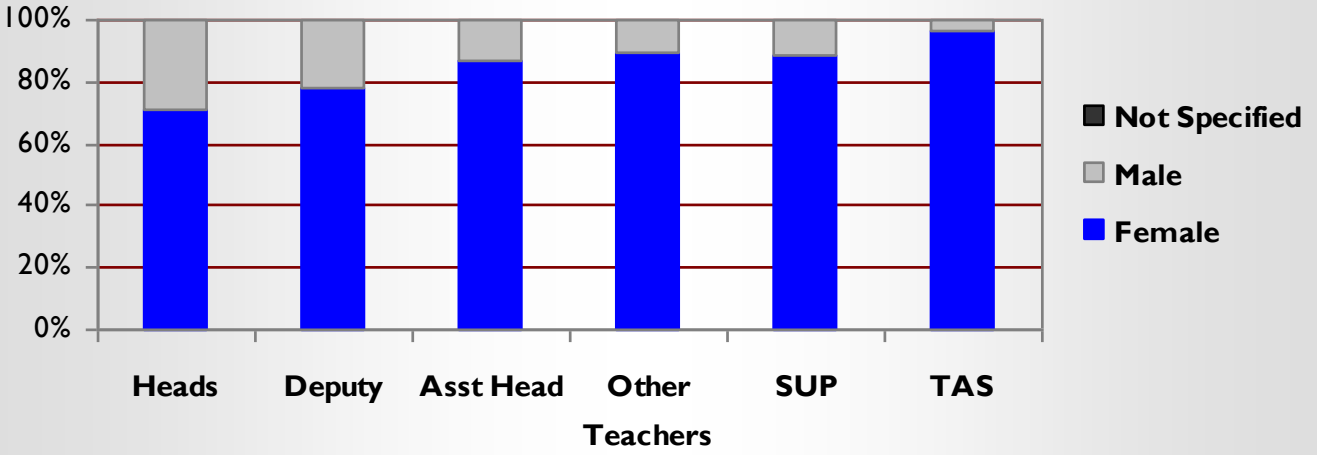
Age Group	Head Teacher	Deputy Head	Assistant Head	Total
21-25	0	0	0	0
26-30	0	1	0	1
31-35	0	1	1	2
36-40	0	3	7	10
41-45	0	9	3	12
46-50	3	6	9	18
51-55	3	6	7	16
56-60	15	8	8	31
61-65	0	2	2	4
66+	0	0	0	0
<b>Total</b>	<b>21</b>	<b>36</b>	<b>37</b>	<b>94</b>



# GENDER

Primary

Gender	Heads	Deputy	Asst Head	Other Teachers	SUP	TAS	Total
Female	255	192	193	4010	3926	5010	13586
Male	106	55	29	489	510	196	1385
Not Specified	0	0	0	0	0	0	0
<b>Total</b>	<b>361</b>	<b>247</b>	<b>222</b>	<b>4499</b>	<b>4436</b>	<b>5206</b>	<b>14971</b>



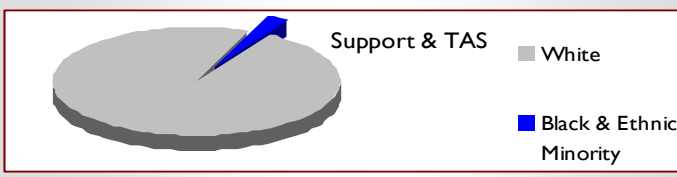
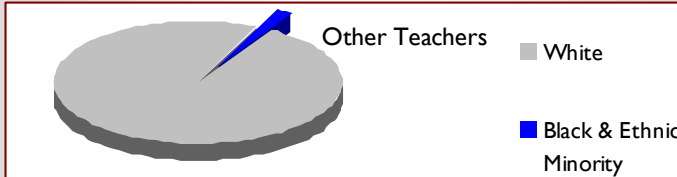
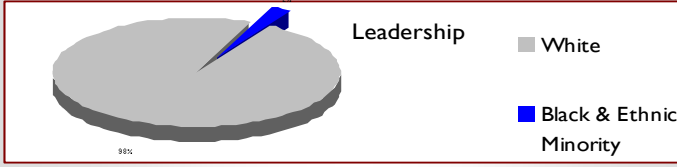
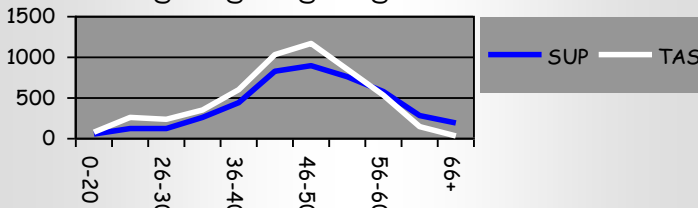
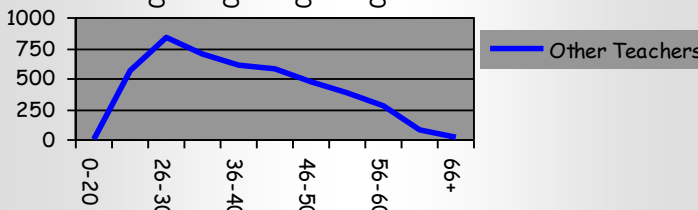
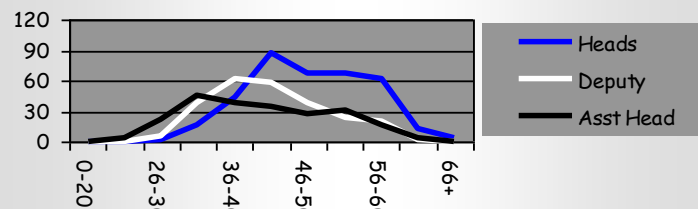
# AGE

# ETHNICITY

Age Group	Heads	Deputy	Asst Head	Other Teachers	SUP	TAS	Total
0-20	0	0	0	1	50	67	118
21-25	0	0	4	557	106	255	922
26-30	1	6	22	827	114	219	1189
31-35	17	38	45	693	259	344	1396
36-40	43	61	39	612	435	582	1772
41-45	88	59	34	581	827	1034	2623
46-50	68	39	27	475	881	1164	2654
51-55	67	23	31	375	740	846	2082
56-60	61	20	17	274	561	521	1454
61-65	12	1	3	83	277	144	520
66+	4	0	0	21	186	30	241
<b>Total</b>	<b>361</b>	<b>247</b>	<b>222</b>	<b>4499</b>	<b>4436</b>	<b>5206</b>	<b>14971</b>

	White	Black & Ethnic Minority	Total
Heads	351	6	357
Deputy	238	6	244
Asst Head	212	7	219
Other Teachers	4,358	73	4,431
SUP	4,292	98	4,390
TAS	5,032	129	5,161
<b>Total</b>	<b>14,483</b>	<b>319</b>	<b>14,802</b>

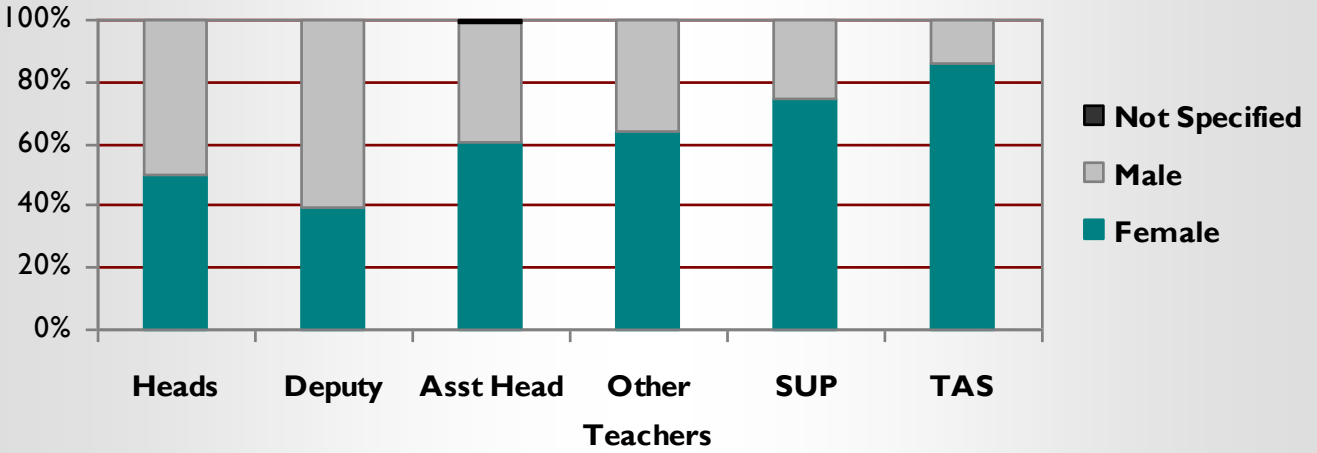
Does not include Refused or Not Obtained



# GENDER

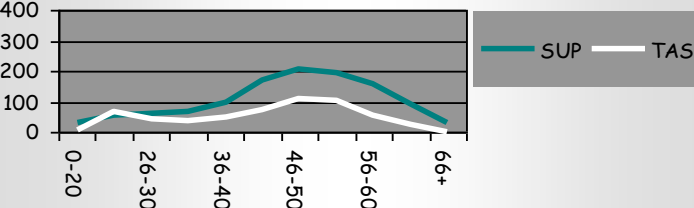
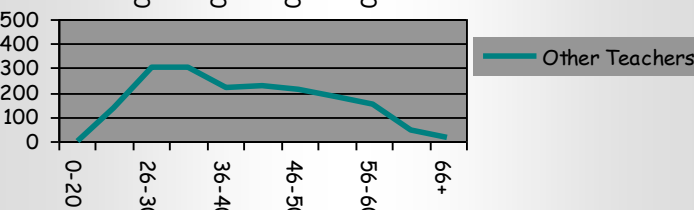
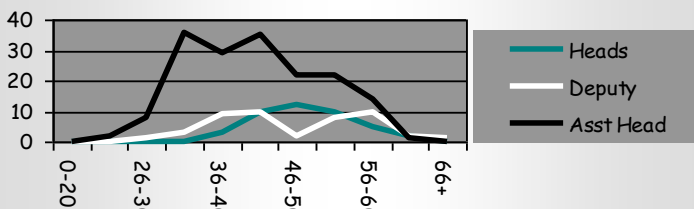
Secondary

Gender	Heads	Deputy	Asst Head	Other Teachers	SUP	TAS	Total
Female	21	18	102	1147	857	488	2633
Male	21	28	66	656	295	82	1148
Not Specified	0	0	1	0	2	0	3
<b>Total</b>	<b>42</b>	<b>46</b>	<b>169</b>	<b>1803</b>	<b>1154</b>	<b>570</b>	<b>3784</b>



# AGE

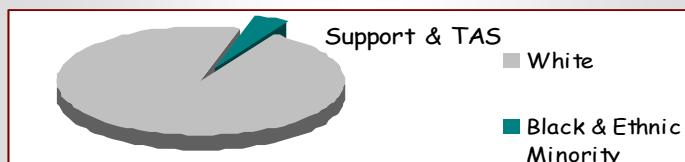
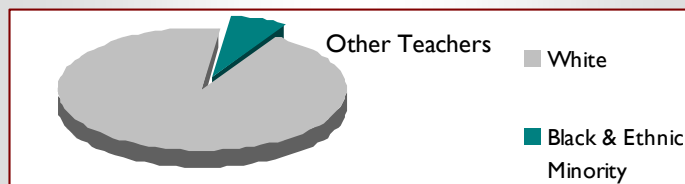
Age Group	Heads	Deputy	Asst Head	Other Teachers	SUP	TAS	Total
0-20	0	0	0	0	28	5	33
21-25	0	0	2	140	55	66	263
26-30	0	1	8	306	60	41	416
31-35	0	3	36	306	67	39	451
36-40	3	9	29	217	97	51	406
41-45	10	10	35	227	172	70	524
46-50	12	2	22	215	207	112	570
51-55	10	8	22	179	193	105	517
56-60	5	10	14	152	156	56	393
61-65	2	2	1	47	91	22	165
66+	0	1	0	14	28	3	46
<b>Total</b>	<b>42</b>	<b>46</b>	<b>169</b>	<b>1803</b>	<b>1154</b>	<b>570</b>	<b>3784</b>



# ETHNICITY

	White	Black & Ethnic Minority	Total
Heads	42	0	42
Deputy	45	0	45
Asst Head	166	3	169
Other Teachers	1,656	112	1,768
SUP	1,104	42	1,146
TAS	533	25	558
<b>Total</b>	<b>3,546</b>	<b>182</b>	<b>3,728</b>

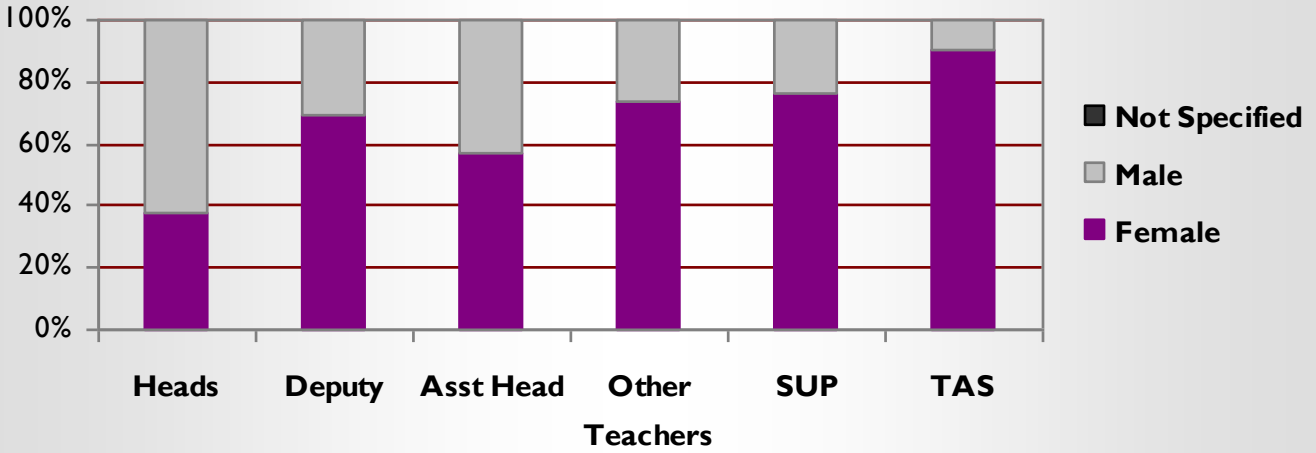
Does not include Refused or Not Obtained



# GENDER

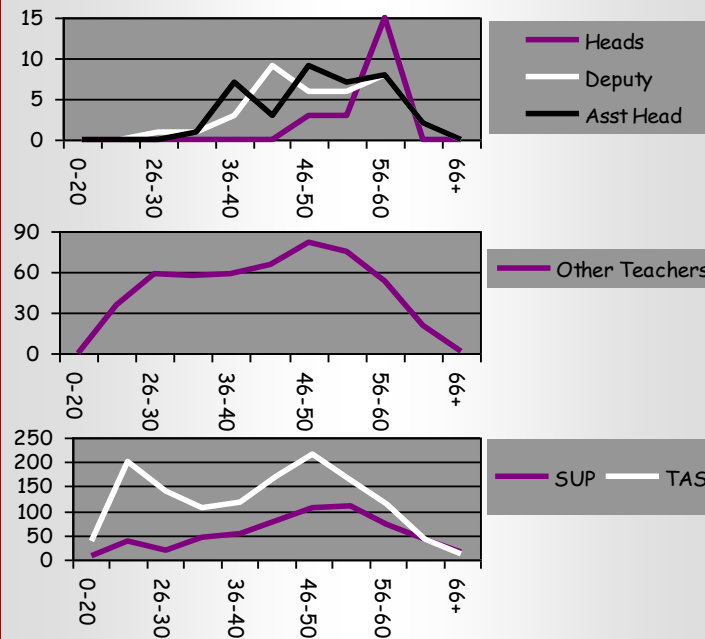
Special

Gender	Heads	Deputy	Asst Head	Other Teachers	SUP	TAS	Total
Female	8	25	21	375	444	1183	2056
Male	13	11	16	132	136	129	437
Not Specified	0	0	0	0	0	0	0
<b>Total</b>	<b>21</b>	<b>36</b>	<b>37</b>	<b>507</b>	<b>580</b>	<b>1312</b>	<b>2493</b>



# AGE

Age Group	Heads	Deputy	Asst Head	Other Teachers	SUP	TAS	Total
0-20	0	0	0	0	6	39	45
21-25	0	0	0	36	36	199	271
26-30	0	1	0	59	19	139	210
31-35	0	1	1	57	46	105	210
36-40	0	3	7	58	53	117	238
41-45	0	9	3	65	79	171	327
46-50	3	6	9	82	106	216	422
51-55	3	6	7	75	109	163	363
56-60	15	8	8	53	71	113	268
61-65	0	2	2	20	41	40	105
66+	0	0	0	2	14	10	26
<b>Total</b>	<b>21</b>	<b>36</b>	<b>37</b>	<b>507</b>	<b>580</b>	<b>1312</b>	<b>2493</b>



# ETHNICITY

	White	Black & Ethnic Minority	Total
Heads	21	0	21
Deputy	35	0	35
Asst Head	35	1	36
Other Teachers	487	10	497
SUP	558	12	570
TAS	1,256	30	1,286
<b>Total</b>	<b>2,392</b>	<b>53</b>	<b>2,445</b>

Does not include Refused or Not Obtained

