

# School Workforce Census

## Autumn 2013

Based on 467 KCC schools as at Nov 13 Census Date  
394 Primary, 50 Secondary (inc 16 PRUs) and 23 Special



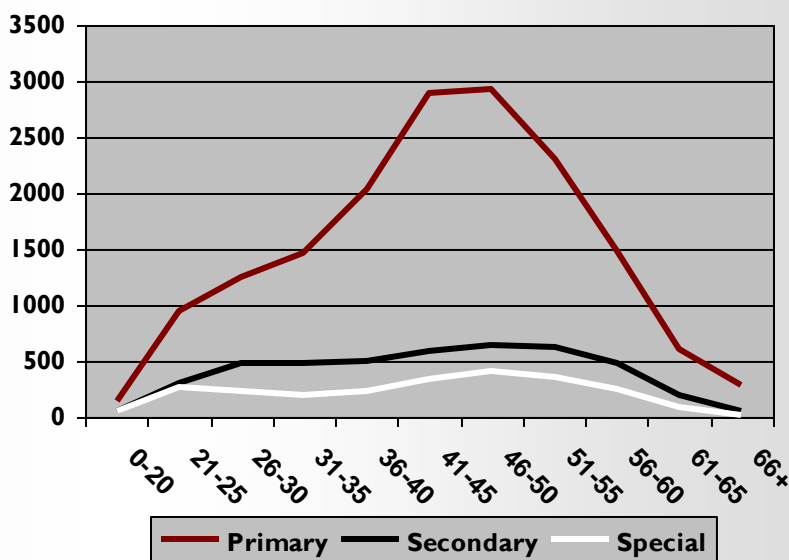
# School Workforce Census Nov 2013 Totals

## Headcount by School Type and Job Group

	Primary	Secondary	Special	Total
Teaching	5,755	2,434	569	8,758
Non Teaching	10,587	1,997	1,876	14,460
<b>Total</b>	<b>16,342</b>	<b>4,431</b>	<b>2,445</b>	<b>23,218</b>

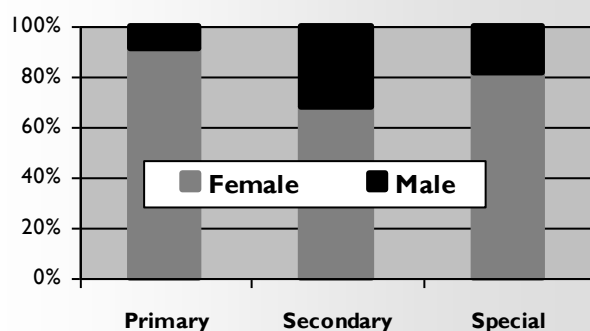
## Headcount by School Type and Age

Age Group	Primary	Secondary	Special	Total
0-20	135	53	56	244
21-25	952	301	266	1,519
26-30	1,247	486	225	1,958
31-35	1,460	490	193	2,143
36-40	2,029	508	230	2,767
41-45	2,900	594	340	3,834
46-50	2,932	642	411	3,985
51-55	2,304	620	349	3,273
56-60	1,490	480	258	2,228
61-65	600	198	94	892
66+	293	59	23	375
<b>Total</b>	<b>16,342</b>	<b>4,431</b>	<b>2,445</b>	<b>23,218</b>



## Headcount by School Type and Gender

	Primary	Secondary	Special	Total
Female	14,867	3,027	2,003	19,897
Male	1,475	1,403	442	3,320
Not Specified	0	1	0	1
<b>Total</b>	<b>16,342</b>	<b>4,431</b>	<b>2,445</b>	<b>23,218</b>



## Sickness Totals by Job group

Sickness period is Sep 2012 – Aug 2013

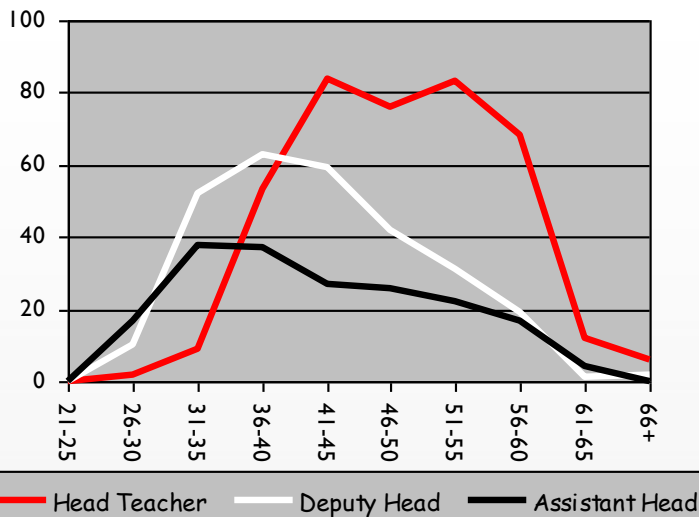
Note : DfE criteria is that Sickness data collection in the SWC is not mandatory for Support Staff and absence is included for contracts that ended before Nov 13 census date

	Teaching Staff	Support Staff	Total
Number of Staff current as at 7th Nov 2013	8,758	14,460	23,218
Total Sick days Sep 12 - Aug 13	41,492	48,389	89,880

# Age Profile - Leadership by Phase

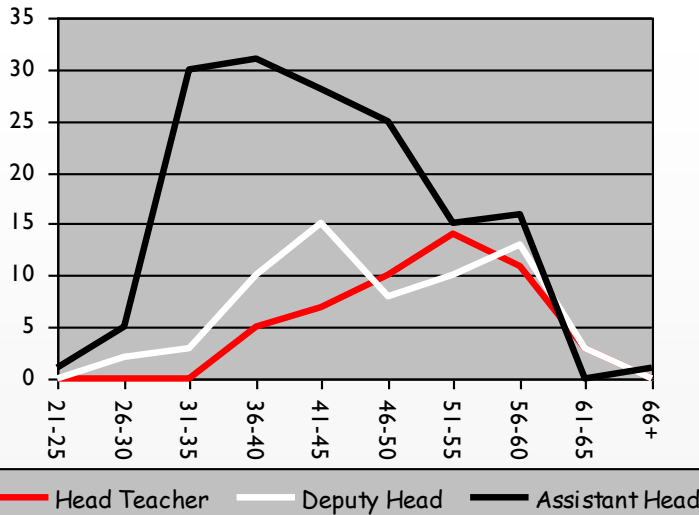
## Primary

Age Group	Head Teacher	Deputy Head	Assistant Head	Total
21-25	0	0	0	0
26-30	2	10	17	29
31-35	9	52	38	99
36-40	53	63	37	153
41-45	84	59	27	170
46-50	76	42	26	144
51-55	83	31	22	136
56-60	68	19	17	104
61-65	12	1	4	17
66+	6	2	0	8
<b>Total</b>	<b>393</b>	<b>279</b>	<b>188</b>	<b>860</b>



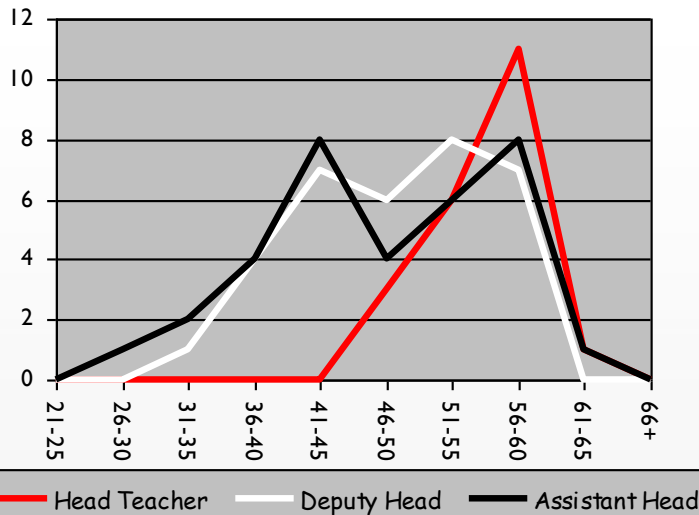
## Secondary

Age Group	Head Teacher	Deputy Head	Assistant Head	Total
21-25	0	0	1	1
26-30	0	2	5	7
31-35	0	3	30	33
36-40	5	10	31	46
41-45	7	15	28	50
46-50	10	8	25	43
51-55	14	10	15	39
56-60	11	13	16	40
61-65	3	3	0	6
66+	0	0	1	1
<b>Total</b>	<b>50</b>	<b>64</b>	<b>152</b>	<b>266</b>



## Special

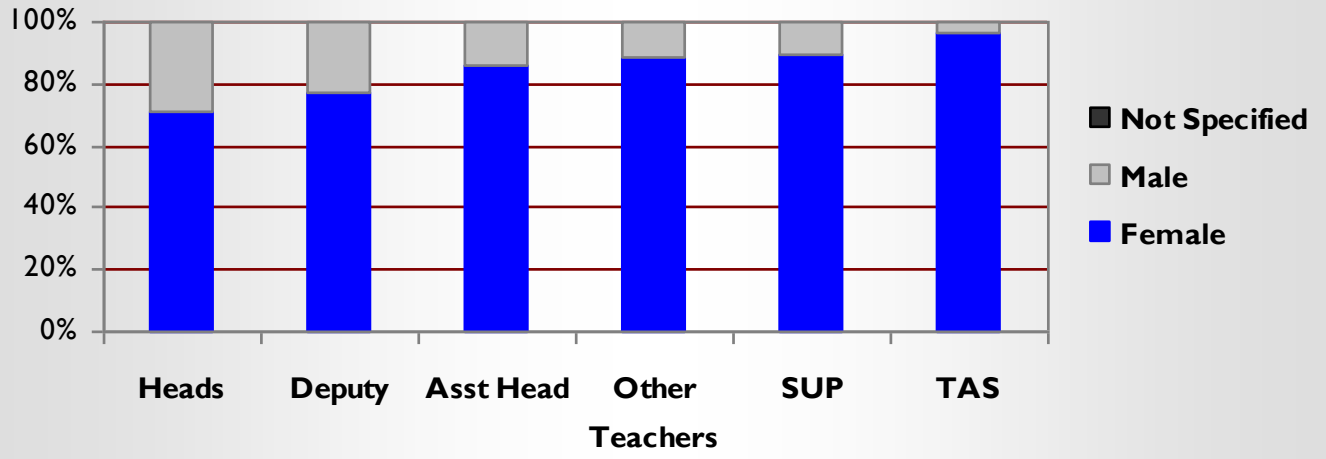
Age Group	Head Teacher	Deputy Head	Assistant Head	Total
21-25	0	0	0	0
26-30	0	0	1	1
31-35	0	1	2	3
36-40	0	4	4	8
41-45	0	7	8	15
46-50	3	6	4	13
51-55	6	8	6	20
56-60	11	7	8	26
61-65	1	0	1	2
66+	0	0	0	0
<b>Total</b>	<b>21</b>	<b>33</b>	<b>34</b>	<b>88</b>



# GENDER

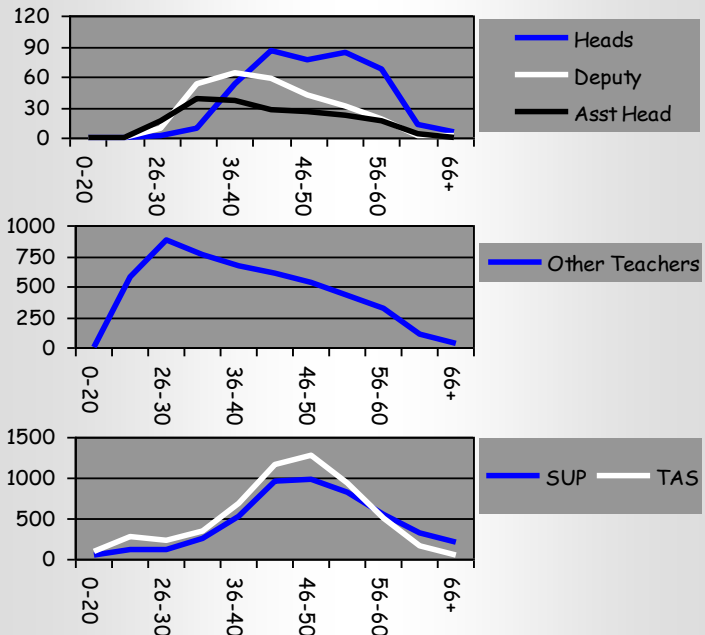
Primary

Gender	Heads	Deputy	Asst Head	Other Teachers	SUP	TAS	Total
Female	281	216	162	4358	4375	5475	14867
Male	112	63	26	537	538	199	1475
Not Specified	0	0	0	0	0	0	0
<b>Total</b>	<b>393</b>	<b>279</b>	<b>188</b>	<b>4895</b>	<b>4913</b>	<b>5674</b>	<b>16342</b>



# AGE

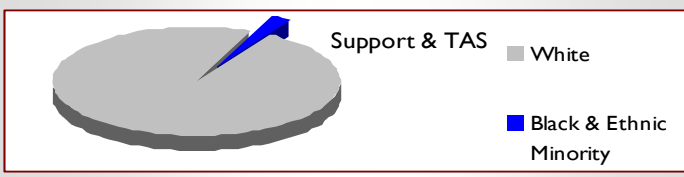
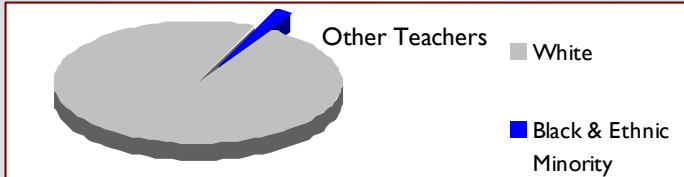
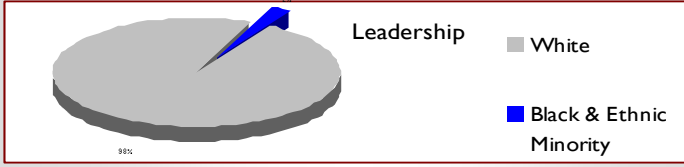
Age Group	Heads	Deputy	Asst Head	Other Teachers	SUP	TAS	Total
0-20	0	0	0	2	46	87	135
21-25	0	0	0	572	114	266	952
26-30	2	10	17	873	125	220	1247
31-35	9	52	38	757	260	344	1460
36-40	53	63	37	666	534	676	2029
41-45	84	59	27	610	965	1155	2900
46-50	76	42	26	529	975	1284	2932
51-55	83	31	22	421	812	935	2304
56-60	68	19	17	324	552	510	1490
61-65	12	1	4	107	315	161	600
66+	6	2	0	34	215	36	293
<b>Total</b>	<b>393</b>	<b>279</b>	<b>188</b>	<b>4895</b>	<b>4913</b>	<b>5674</b>	<b>16342</b>



# ETHNICITY

	White	Black & Ethnic Minority	Total
Heads	381	6	387
Deputy	271	7	278
Asst Head	177	7	184
Other Teachers	4,759	88	4,847
SUP	4,763	107	4,870
TAS	5,507	124	5,631
<b>Total</b>	<b>15,858</b>	<b>339</b>	<b>16,197</b>

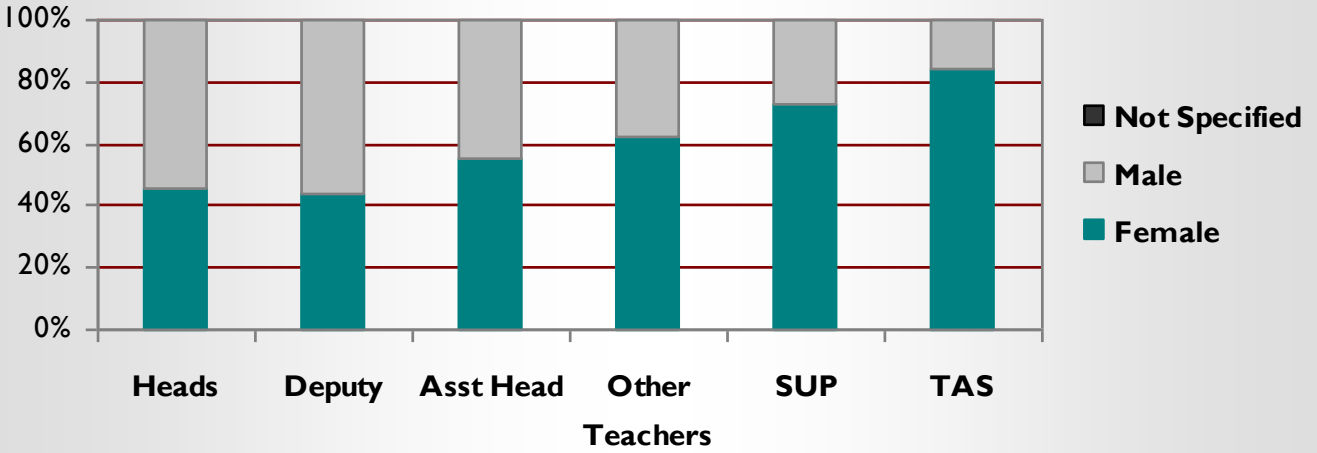
Does not include Refused or Not Obtained



# GENDER

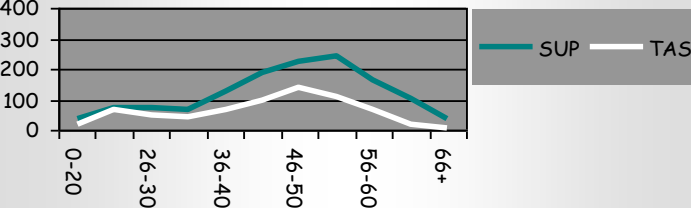
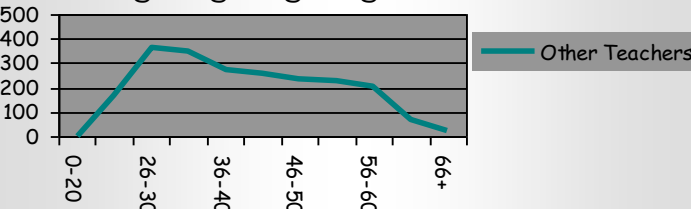
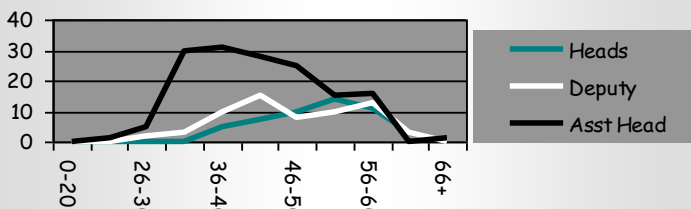
Secondary

Gender	Heads	Deputy	Asst Head	Other Teachers	SUP	TAS	Total
Female	23	28	84	1359	966	567	3027
Male	27	36	68	809	356	107	1403
Not Specified	0	0	0	0	1	0	1
<b>Total</b>	<b>50</b>	<b>64</b>	<b>152</b>	<b>2168</b>	<b>1323</b>	<b>674</b>	<b>4431</b>



# AGE

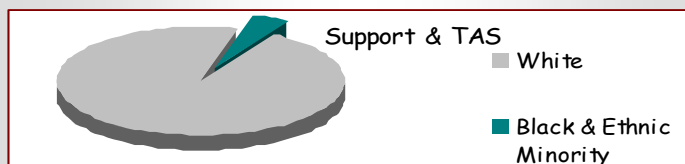
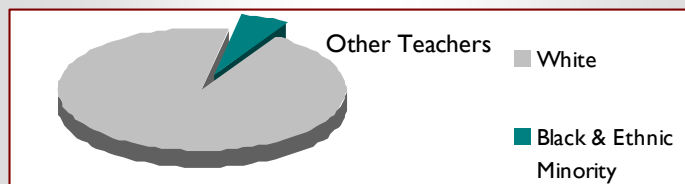
Age Group	Heads	Deputy	Asst Head	Other Teachers	SUP	TAS	Total
0-20	0	0	0	0	37	16	53
21-25	0	0	1	164	70	66	301
26-30	0	2	5	362	71	46	486
31-35	0	3	30	350	64	43	490
36-40	5	10	31	271	126	65	508
41-45	7	15	28	259	188	97	594
46-50	10	8	25	238	222	139	642
51-55	14	10	15	228	243	110	620
56-60	11	13	16	206	165	69	480
61-65	3	3	0	71	103	18	198
66+	0	0	1	19	34	5	59
<b>Total</b>	<b>50</b>	<b>64</b>	<b>152</b>	<b>2168</b>	<b>1323</b>	<b>674</b>	<b>4431</b>



# ETHNICITY

	White	Black & Ethnic Minority	Total
Heads	51	0	51
Deputy	63	0	63
Asst Head	149	3	152
Other Teachers	2,018	114	2,132
SUP	1,262	52	1,314
TAS	636	29	665
<b>Total</b>	<b>4,179</b>	<b>198</b>	<b>4,377</b>

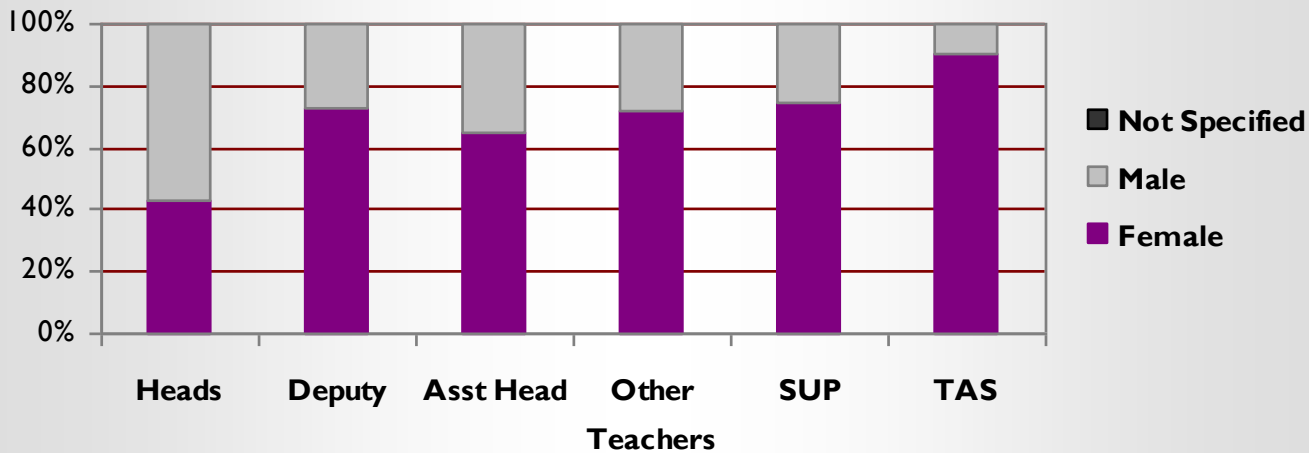
Does not include Refused or Not Obtained



# GENDER

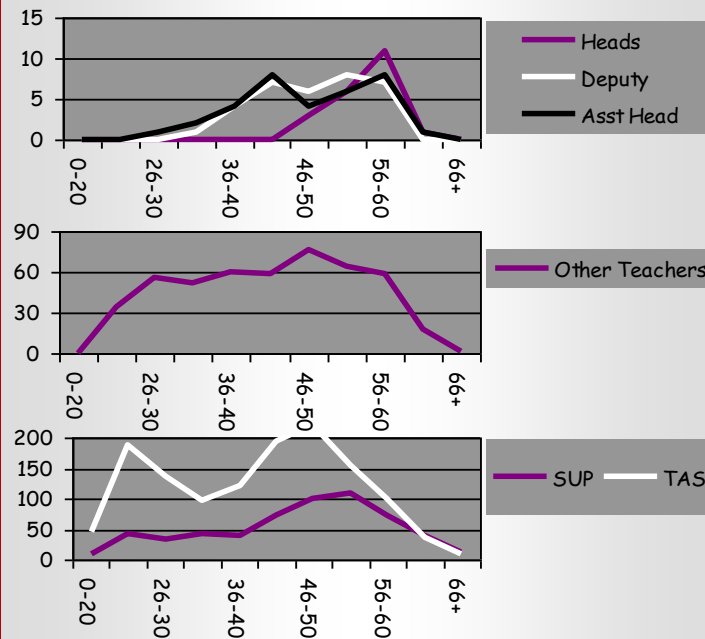
Special

Gender	Heads	Deputy	Asst Head	Other Teachers	SUP	TAS	Total
Female	9	24	22	345	429	1174	2003
Male	12	9	12	136	145	128	442
Not Specified	0	0	0	0	0	0	0
<b>Total</b>	<b>21</b>	<b>33</b>	<b>34</b>	<b>481</b>	<b>574</b>	<b>1302</b>	<b>2445</b>



# AGE

Age Group	Heads	Deputy	Asst Head	Other Teachers	SUP	TAS	Total
0-20	0	0	0	0	10	46	56
21-25	0	0	0	34	43	189	266
26-30	0	0	1	56	32	136	225
31-35	0	1	2	52	42	96	193
36-40	0	4	4	60	40	122	230
41-45	0	7	8	59	73	193	340
46-50	3	6	4	77	100	221	411
51-55	6	8	6	64	110	155	349
56-60	11	7	8	59	73	100	258
61-65	1	0	1	18	38	36	94
66+	0	0	0	2	13	8	23
<b>Total</b>	<b>21</b>	<b>33</b>	<b>34</b>	<b>481</b>	<b>574</b>	<b>1302</b>	<b>2445</b>



# ETHNICITY

	White	Black & Ethnic Minority	Total
Heads	21	0	21
Deputy	31	1	32
Asst Head	33	0	33
Other Teachers	464	11	475
SUP	560	10	570
TAS	1,253	36	1,289
<b>Total</b>	<b>2,362</b>	<b>58</b>	<b>2,420</b>

Does not include Refused or Not Obtained

