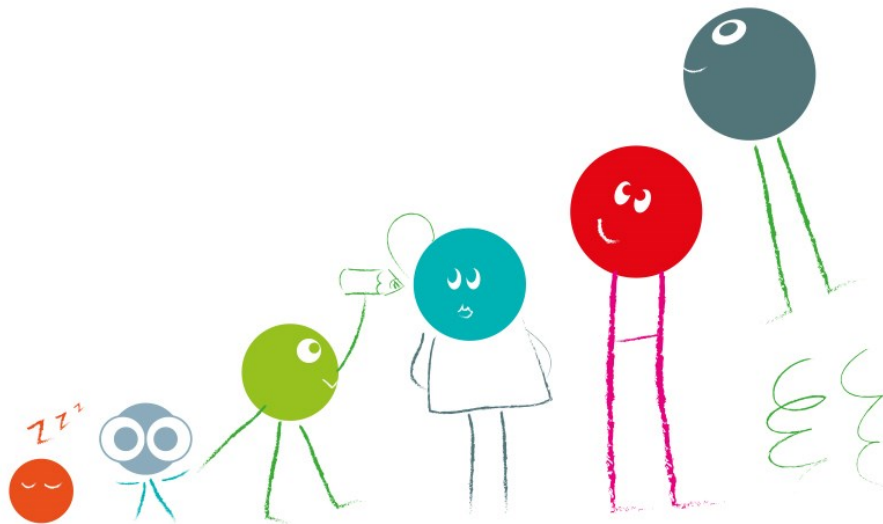




Early Years and Childcare Excellence

Early Years and Childcare Bulletin

February 2018

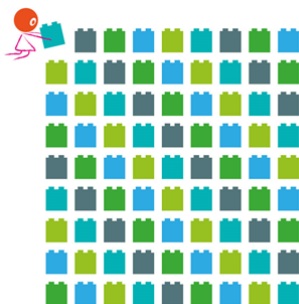


Kent County Council

Early Years and Childcare Service

Contents

Page 2	Welcome and Introduction Alex Gamby
Page 3	News and Updates
Page 10	Threads of Success Training, Services and Products
Page 16	Contact Us



Welcome and Introduction Alex Gamby, Head of Early Years and Childcare

Welcome to 2018. I would like to wish you all a Happy New Year and also trust that you had some well-deserved rest and relaxation with family and friends over the Christmas period.

Matt Dunkley CBE

We are delighted to welcome Matt Dunkley as the new Corporate Director for Children, Young People and Families, taking over in this very important role from Patrick Leeson.

Matt's roles and responsibilities are to:

- Deliver the directorate service for Education and Young People's Services and advise the council on policies and developments to ensure high quality universal, targeted and specialist services for children and young people.
- Lead and direct the development, implementation and review of school and children and young people's learning services, to ensure the council meets its legal and statutory obligations for young people and their achievements.
- Direct and review the development of integrated early help and preventative services to secure the best outcomes for children, young people and their families.
- Work in partnership with the Corporate Director of Social Care, Health and Wellbeing to help ensure the responsibilities of the statutory role of Director of Children's Services are met.

Biography

Matt has 33 years' experience in Education and Children's Services having previously held a variety of senior positions.

Matt is a past President of Association of Directors of Children's Services (ADCS) and was the Director of Children's Services (DCS) in East Sussex for 8 years. He has lived in the United States of America and Australia. He subsequently worked in their education sectors and most recently was the Interim DCS with Norfolk County Council.

The Education People

Plans continue apace in readiness for the full launch of The Education People (new Education Services Company) in April this year. As a reminder, Lisa Evans (Director of Abacus Childcare Ltd in New Romney and also the Chair of the Kent Association of Early Years and Childcare Providers) is the Early Years representative on KCC's Stakeholder and Commissioning Board, alongside which I am pleased to announce that Michelle Jones, Manager of Little Acorns Pre-School in Herne (also the Canterbury representative on the Association) has been appointed as the Early Years representative on The Education People Company Board.

I hope you will agree with me that both Lisa and Michelle are highly suitable for these important roles and will ably represent the needs and issues of the Early Years and Childcare sector going forward.



News and Updates

Early Years and Childcare Census, Surveys and Consultations

KCC is aware that over the past year you have had a considerable amount of surveys, audits and consultations to complete. We had worked to try to minimise the number we would ask you to complete this year. However we are already aware that over the coming few months there are several events you can expect to be asked to complete or take part in. We hope that this prior notification will help providers plan to do so.

Event	Timing
Early Years Statutory Census	Open during January (Closing date 29th)
Qualification Survey	First two weeks of February
Non Statutory Early Years and Childcare Survey	Late February/Early March
Early Education Funding Finance Consultation	Late March
Provider Satisfaction Survey	Early June

Early Years Pupil Premium (EYPP)

As you are aware there have been some challenges with the Synergy database and accessing EYPP. Please can you continue to follow the guidance sent out by Management Information to ensure you receive the funding in a timely fashion.

Please

- Continue to ask parents to complete the information on the parental declaration form
- Input the details on to the online form via KELS1 or via [Online form for EYPP applications](#)
- Note that Management Information will receive a download of the forms on a weekly basis and will process accordingly.

Thank you to those of you who have shared how you are spending the EYPP and the difference it has made to the children in your care. If you have any further examples to share please send to EYinclusion@kent.gov.uk so we can cascade good practice across the county.

Update from Zenia Ford, County Strategic Lead for Early Years (SEN)

When making requests for support at EY LIFT meetings please always go to [KELSI](#) for the most up to date [form](#). The one that we would expect to see is blue in colour and looks quite different to the previous document.

Special Educational Needs Inclusion Fund (SENIF Guidance Document)

We have updated the guidance on [KELSI](#) to reflect some slight changes and clarifications around supporting evidence for SENIF requests and confirmation from the DfE. Please be sure to always use the request [form](#) on KELSI.

A summary of the changes are:

- A sentence has been added to clarify that SENIF is not designed to provide one to one support but is a “top up” to the EY Free entitlement funding as directed by the DfE
- Clarification that children need to attend a Kent setting to be considered for the funding
- The process is the same for settings applying for funding for children with an EHCP but the County SENIF Funding Officer needs to be contacted for the application form
- There is a new page that outlines for settings what should have taken place before SENIF is requested
- An emphasis on the need for a REVIEWED Personalised Plan before SENIF can be considered
- Clarification on how settings apply for SENIF when there is a confirmed deferred entry place for a child who should be attending school.

Parent Guides

Just a little reminder that there are guides for parents on KELSI that explain about EY LIFT and SENIF processes:

- [Parent Guide SENIF](#)
- [Parents Easy Read Guide to SENIF](#)
- [Parent Guide EY LIFT A5 Booklet](#)
- [Parents Easy Read Guide to LIFT](#)

Primary Assessments: Information and Resources for 2018

The Standards and Testing Agency has released its document [Primary assessments: information and resources for 2018](#) which is a guide to help schools and local authorities find online content for EYFS, KS1 and KS2 assessments in 2018. The document contains a [link](#) to a page containing the following: EYFS assessment and reporting arrangements, EYFSP handbook, Statutory framework for EYFS and Guidance on exemptions for Early Years providers.

SENIF Practitioners

The SENIF practitioners are now all in post and will be supporting settings accessing SENIF to carry out strategies suggested by the specialist teacher.

SENIF Practitioners (term time)

District	Name	Number of days	KCC Base
<i>East</i>			
Thanet	Mary Rigden	5	Brook
Swale	Sian Chamberlain	5	Brook
Canterbury	Fleur Thoroughgood	5	Kroner
<i>South</i>			
Dover	Gillian Sheppard	5	Kroner
Ashford	Val Mills	2.5	Kroner
Shepway	Val Mills	2.5	Kroner
<i>West</i>			
Maidstone	Karen Oatham	5	Sessions
Tonbridge & Malling	Gail Coleman	2	Worrall House
Tunbridge Wells	Gail Coleman	2	Worrall House
<i>North</i>			
Sevenoaks	Debbie James	5	Worrall House
Gravesham	Ruth Jordan	3	Sessions House
Dartford	Tina Barnes	3	Joynes House

SENIF Monitoring Officers (all year round)

<i>North & West</i>	Cathy Fidget	5 days	Worrall House
<i>South & East</i>	Fiona Miller (3 month contract)	3 days	Kroner House

Supporting children with medical conditions in Early Years settings

When settings are caring for children with ongoing or complex medical needs they must ensure that the correct procedures are followed to ensure the child's safety.

Settings must also ensure that their policies are in line with the Local Safeguarding Children Board procedures.

For a Frequently Asked Questions document and a suggested Individual Healthcare Plan format please follow this [link](#).

Kent Provider Agreement

You will be aware that the current Kent Provider agreement expires on 31st March 2018. We understand from the DfE there are no plans to issue revised statutory guidance for local authorities. Whilst there will be minimal change to the current agreement, you will appreciate the importance of having an agreement for which the date is current. We therefore intend to publish a new agreement which will come into effect from 1st April 2018. A new Provider Declaration will also be issued which you must sign and return to Management Information by 1st March 2018 in order to continue being registered to receive funding. If any amendments are made to the agreement before publication we will notify you of these for ease of reference. All documents will be issued to you at the same time.

Provider Online Directory Entries

Providers using the online directory to advertise their service need to be aware that their core details (setting name, registered person, setting address, email and telephone number) come into the system directly from Ofsted and cannot be changed by the provider.

Could we ask providers to find their setting on the online directory by entering their postcode into the appropriate search box through this [link](#). If the core details as described above are not current or correct, please contact Ofsted to ask for them to be changed.

If your setting is not displaying on the directory it could be related to the display permissions you have set. This means your record will not be available for parents to view. If you would like to amend your display setting please complete the permissions form by following this [link](#).

Please remember that you are responsible for keeping all other information up to date as part of the Kent Provider Agreement.

Ofsted Telephone 0300 123 1231

Ofsted Email enquiries@ofsted.gov.uk

Committee News

Legislative changes affecting the Charitable Incorporated Organisation (CIO)

The Charity Commission has announced a phased timetable allowing charitable companies to convert to Charitable Incorporated Organisations (CIOs) following legislative changes in Parliament on 23rd November 2017. The new legislation also means that all Charitable Incorporated Organisations (CIOs) will be listed on the Business Names Index, held by Companies House. For more detail on what this means for you please follow this [link](#) or alternatively, contact your Childcare Sufficiency Officer who will be able to discuss this with you.

You can now submit your charity annual return

You can now submit your 2017 annual return. You will need to submit your annual return for 2016 before you can do the return for 2017. There is guidance to help you do this, please follow this [link](#).

New General Data Protection Regulation 2018

A new General Data Protection Regulation (GDPR) comes into force on 25th May 2018. Many of the GDPR's main concepts and principles are much the same as those in the current Data Protection Act (DPA); however, there are new elements and significant enhancements, so you will be required to do some things for the first time and some things differently.

To support settings in getting ready for the new Regulation we are putting on a series of two hour workshops across the county during February and March which are bookable through CPD Online at a cost of £30.

To book your place on one of these workshops please see page 15 for list of dates and venues.

School Closures

Please read Matt Dunkley's [update](#) on schools' requirements during winter weather.

Level 2 Qualification - DFE Consultation

The DfE has opened a consultation on the **minimum requirements criteria** for the **Early Education and Childcare Workforce Level 2 Qualification**. To ensure your voice is heard, we would encourage you to review the consultation documentation and submit a response. This particular qualification is the foundation for learners moving through to undertake a Level 3 qualification and become the future leaders within the sector. Therefore, it is imperative that the criteria reflects the skills and knowledge needed at this level in order for individuals to be prepared for future learning.

The consultation closes on **28th February 2018** and responses can be submitted through the following [site](#).

Sepsis in children

What is sepsis?

Sepsis is the reaction to an infection in which the body attacks its own organs and tissues. Sepsis is a potentially life-threatening condition; however it can be easily treated if caught early.

Symptoms of sepsis will present differently between adults and children. The information below is to help you identify the symptoms in children.

ANY CHILD WHO:

- 1 Is breathing very fast
- 2 Has a 'fit' or convulsion
- 3 Looks mottled, bluish, or pale
- 4 Has a rash that does not fade when you press it
- 5 Is very lethargic or difficult to wake
- 6 Feels abnormally cold to touch

MIGHT HAVE SEPSIS
Call 999 and ask: **could it be sepsis?**

The UK Sepsis Trust registered charity number (England & Wales) 1158843

ANY CHILD UNDER 5 WHO:

- 1 Is not feeding
- 2 Is vomiting repeatedly
- 3 Hasn't had a wee or wet nappy for 12 hours

MIGHT HAVE SEPSIS
If you're worried they're deteriorating **call 111 or see your GP**

JUST ASK
"COULD IT BE SEPSIS?"
IT'S A SIMPLE QUESTION, BUT IT COULD SAVE A LIFE.

For more information about sepsis, to download information posters or order leaflets to share with parents please visit [The UK Sepsis Trust](#).

Healthy Eating Guidance

New example menus and recipes have been developed with nutrition experts to support Early Years providers plan healthy, tasty meals for young children. This new resource is found [here](#).

Citizen Aid App

The Citizen Aid App is designed to support the public in knowing what to do during a security alert or terrorist attack. You can download the App free of charge at the Apple App Store, Windows Phone Store and at Google Play. Find out more about Citizen Aid [here](#).



Kent Children and Families Information Service

We are here to help

Your details, your responsibility

Your details may not be displayed on our website, so you could be missing out on potential business. We recommend that you review your childcare provision details held on a regular basis.

Your permission settings

The information you give us will be made available, with your consent, over the telephone, in writing and via the internet. You have the option to restrict the ways in which your information is published. It is important that you complete the permissions form correctly using the following link to [our permissions form](#).

Make sure your details are up to date

Are the details of your nursery or preschool up to date?

Do we hold the correct contact details for your service?

Are you providing before and after school care that CFIS are not aware of?

Register to use our online service where you are able to update your details at a time that is convenient to you.

The information can be found on our [website](#) or by calling us Monday to Friday between 9am-5pm.

If you need to contact us about any of the above please email kentcfis@kent.gov.uk or call us at 03000 41 23 23

Threads of Success Improvement and Achievement Award

In September, nurseries and preschools across Kent were honoured with a prestigious Threads of Success Improvement and Achievement Award.

The awards, presented by Alex Gamby, Head of Early Years and Childcare, Kent County Council, took place in Maidstone and recognised the commitment of nurseries and preschools across Kent to undertake an action research project designed to secure and demonstrate improvements in the quality of provision. These projects focussed on areas such as 'improving the outdoors', 'maths' and 'language and communication' and challenged settings to look critically at their own learning practice and environments, to ultimately improve the quality of teaching and learning for Kent's children.

Jane Nolan, Improvement and Standards Manager for Kent County Council's Early Years and Childcare Service, said: "The quality of the projects for the 2017 Awards was of a very high standard. Settings demonstrated strong commitment to working as a whole team, self-evaluating their practice, involving parents and focusing on making a difference to all children. I am delighted we were able to acknowledge and celebrate these settings' achievements."

To find out more about the Improvement and Achievement Award 2017, please visit [Threads of Success](#).

Improvement and Achievement Award Winners 2016		
Setting	District	Level of Award
Culverstone Green Nursery	Gravesend	Enhancing
Little Rascals Nursery 2	Tunbridge Wells	Enhancing
Smarties Nursery	Maidstone	Enhancing
Towers Tiny Tots Preschool	Ashford	Establishing





**Olympia Central, Kensington
Friday 2nd and Saturday 3rd March**

<https://www.childcareexpo.co.uk/london/>

Early Years Theatre

- 10.45am – 11.30am: The Power of Schemas: Understanding the importance of identifying patterns in children's play and behaviour as they learn and make sense of their world - Stella Nalini, Early Years Consultant, Kent County Council - Threads of Success



Threads of Success Training, Services and Products

MUST READ!

Unlocking Outstanding Potential Pathway to Excellence

Our new and exciting 'Unlocking Outstanding Potential' initiative is ready to launch.

This is a package of guidance and training to support settings to build on existing knowledge to nurture growth to develop a culture of outstanding practice.

We will be piloting two Pathways to Excellence workshops in February 2018 where invited settings will attend a day's interactive workshop to:

- Enhance knowledge and understanding of the requirements to be outstanding
- Develop a clear ethos and vision for your own setting to move to outstanding
- Understand how to ensure staff disposition and attitude promotes exceptional outcomes for children
- Develop a culture of outstanding practice.

There will be additional events commencing in April 2018 which will be available via CPD Online for settings and childminders.

In addition we have added focussed Strategic Improvement Visits to support:

- Enhancing the quality of teaching
- Quality assurance for success
- Embracing the Enhancing Family Involvement in Children's Learning (EFICL) course
- Quality outdoor learning for all children
- Tracking and Monitoring of children's progress.

To support system leadership and collaborations we have developed a new workshop based on:

- Sustained Shared Thinking and Emotional Wellbeing

and a further two new programmes:

- Cascading the knowledge: “ Certificate Collectors or Cascaders”
- Making the moderator: “ Moving Mindsets”

An enhancement to the Leadership and Management programme for committees and individuals includes support for:

- The Registered Person’s role in quality improvement

Finally we will be introducing ‘**Masterclasses**’. A two hour intellectually stimulating professional discussion with like-minded professionals to debate Early Years topics and research. These will include:

- Planning for learning
- Intentional provocation
- Transition is a process

NEW Products available on Threads of Success:

Early Years Special Educational Needs Co-ordinator Handbook

The Early Years and Childcare Service has specially designed this [handbook](#) to support SENCoS. It builds on initial SENCo training, enabling you to continue to develop and reflect on your everyday practice.



SEND Terms and Definitions Development Wheel

The role of SENCo is a demanding and complex one with a language of its own. This [wheel](#) will be particularly useful for new SENCoS, but it is also a helpful quick guide to SEND terms and definitions for managers, teachers and all Early Years practitioners.

A Guide to Inclusive Strategies for Early Years Development Wheel

This [wheel](#) is designed to provide practitioners and parents with some simple strategies to support and include all children. The main focus is on developing skills in the prime areas of learning.





School Readiness Development Wheel

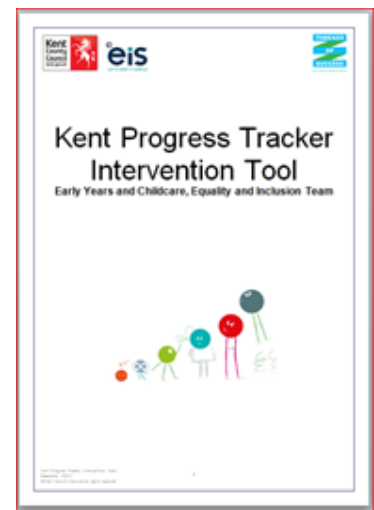
This [wheel](#) is designed specifically for practitioners and school teachers to use and to actively share with families. The wheel focusses on a number of areas including what school readiness is, communication, health aspects, learning and physical development and family involvement.

The Kent Progress Tracker Intervention Tool

This [Intervention Tool](#) is designed to measure impact and improvement in the three Prime Areas of Learning. It allows for the comparison of up to four interventions or funding streams. Points of progress are identified across the Development Matters age bands and can therefore show progress over differing periods of time.

The Intervention Tool will help you to:

- analyse and compare the progress of children receiving a particular intervention, or accessing a particular funding stream
- plan appropriate interventions or allocate specific funding, with regard to individual needs, to promote improved outcomes and support school readiness
- demonstrate the impact of a particular intervention/s and justify the use of additional funding allocated for individual children and groups of learners.



Kent County Council's 4th Annual Out of School Childcare Conference *The Power of Play*

Following a very successful 2017 Threads of Success Out of School Conference, we are pleased to announce our 4th Annual Conference which will be held on Saturday 12th May 2018. Once again we will offer delegates the opportunity to participate in a wide range of high quality theoretical and interactive practical workshops, and have invited a key note speaker to engage and inspire you.

The conference is open to practitioners working within standalone Out of School Childcare settings, Early Years settings and childminders offering wraparound care and school based Out of School Childcare. Practitioners will be able to attend a maximum of three workshops on the day.

Practitioners will also have an opportunity to visit a range of market stalls offering advice, support and information to delegates.

Testimonial from 2017 Conference delegate (anon)

" I just wanted to pass on my thanks to all involved in putting on a fab and very informative conference. It was certainly worth the journey and the early start on a Saturday. It was motivational and inspirational. Well done all."

E-learning training now available

Our first e-learning programmes are now available to purchase through [Threads of Success](#). We have developed these training programmes to include a more flexible offer within the Threads of Success framework and to encompass the varied styles of learning across the sector.

The benefits of e-learning are that individuals can access the training in a more flexible way and complete the programme over a time that suits the needs of the learner and the needs of the business.

Programmes now available to purchase are:

- **Introduction to the Early Years Foundation Stage (EYFS) for practitioners**

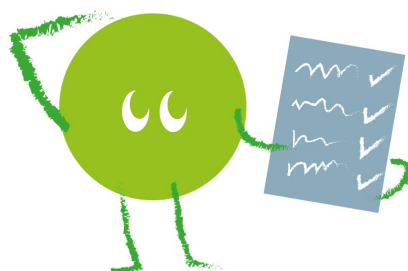
This course is designed to give new entrants, including apprentices, into the Early Years and Childcare workforce an introduction to the requirements of the EYFS. It would also be a valuable course to be included within an Early Years and Childcare setting induction programme and as a refresher for those practitioners re-entering the workforce.

- **Introduction to the EYFS for the registered person**

This course is designed to give the registered person of an Ofsted registered Early Years and Childcare setting an overview of their responsibilities within the EYFS. It is recommended that those associated with the registration, for example committee members, would also benefit from undertaking this e-learning course, as it would strengthen the leadership and give a better understanding of the requirements of the EYFS.

- **School Readiness**

This course aims to support Early Years practitioners, Children's Centres, schools and parents/carers in their understanding of School Readiness and how they can support children with the transition into school.



Information Governance: Making sense of the General Data Protection Regulation (GDPR)

A new two hour workshop to support settings in understanding their responsibilities with regard to information governance and to help them prepare for the new GDPR is now available to book through CPD Online at a cost of £30. See page 15 to book your place.

Ofsted updates

Early Years

Analysis of Kent Ofsted reports for **Early Years providers receiving a less than good judgement** has identified the following areas for improvement:

- Safeguarding: including DBS, Designated Persons' understanding of their roles and responsibilities and their policies and the allegations against staff process, staff safeguarding training and knowing their roles and responsibilities and disqualification arrangements, mobile phones, safer recruitment, Prevent Duty guidance and the signs that indicate a child may be at risk of harm
- Observation, assessment and planning: including the tracking of individual children and cohort tracking to identify gaps
- Staff supervision: specifically the introduction and improvement of the coaching of staff to improving performance and the effective use of targeted development plans for staff.

Threads of Success has a range of training and support packages to address the above, including:

- [Strategic Improvement Visits](#) with a focus on each of the following:
 - ◇ Safeguarding and Welfare Requirement audit
 - ◇ A review of your observation, assessment and planning procedures
 - ◇ A review of your self-evaluation processes
 - ◇ Identification of CPD priorities and the development of a staff training plan
 - ◇ Ofsted readiness visit (6 hours)
- [3 Day Mentor Coaching Programme](#)
- [Effective Self-evaluation](#) – Early Years
- [Are You Ready for Inspection?](#) training – Early Years

Out of School

Analysis of Kent Ofsted reports for **Out of School provision receiving a less than good judgement** has identified the following areas for improvement:

- Safeguarding: including the Designated Leads' understanding of their roles and responsibilities, staff deployment and risk assessments, staff understanding and implementation of the safeguarding policies and procedures, the Prevent Duty guidance, the signs and symptoms that would cause concern about a child's welfare and the procedures to follow to report such concerns and staff knowledge of issues that may affect their suitability, such as disqualification by association
- Self-evaluation procedures: making better use of self-evaluation to accurately review practice and identify areas for improvement, monitoring the effectiveness of practice and the quality of teaching
- Staff CPD: including developing staff knowledge of safeguarding procedures, and accurate observation, assessment and planning.

Threads of Success has a range of training and support packages to address the above, including:

- [Strategic Improvement Visits](#) with a focus on each of the following:
 - ◇ Safeguarding and welfare requirement audit
 - ◇ A review of your observation, assessment and planning procedures
 - ◇ A review of your self-evaluation processes
 - ◇ Identification of CPD priorities and the development of a staff training plan
 - ◇ Ofsted readiness visit (6 hours).
- [Are You Ready for Inspection?](#) training – Out of school
- [Effective Self-evaluation](#) – Out of school

Coming Soon.....Performance Management and Supervision workshop

To support the Early Years Management Teams in providing a robust and effective Performance Management and Supervision process delegates will:

- Explore and identify the skills and strategies required to support the workforce
- Look at methods to measure performance
- Discuss the benefits of Performance Management in relation to personal well-being and productivity.

An evening with.....

We have had extremely positive feedback from those of you who attended the two evening events delivered by Dr Kay Mathieson. In total 80 practitioners spent an inspiring time 'Learning to Behave!'

Kay helped us all to consider what is reasonable to expect of a child considering their previous experience, age, stage, ability, understanding, personality and current experiences of daily life and what our role is in supporting the children in our settings.

Briefing and Networking Sessions

Our regular Briefing and Networking Sessions provide a good opportunity to keep your setting and staff up to date and to network with colleagues from other settings.

We run sessions for Early Years and Childcare settings and schools and also specifically for settings providing Out of School care including schools.

Why not book a place on the next round and benefit from the opportunity to network and hear important updates?

18/036	20 th February 2018	Riverside Church, Whitstable
18/037	22 nd February 2018	Holiday Inn, Ashford Central
18/038	26 th February 2018	Hadlow Manor Hotel
18/039	28 th February 2018	Mercure Dartford Brands Hatch Hotel

General Data Protection Regulation 2018—click on links below to book your place.

EYC 18/095	20th February 2018	Ashford International Hotel
EYC 18/099	26th February 2018	The Ark Christian Centre
EYC 18/103	5th March 2018	Hythe Imperial Hotel and Spa
EYC 18/096	21st February 2018	Riverside Church, Whitstable
EYC 18/100	27th February 2018	The Coniston, Sittingbourne
EYC 18/104	6th March 2018	St Augustine's College Ltd
EYC 18/097	22nd February 2018	Mercure Dartford Brands Hatch Hotel
EYC 18/105	7th March 2018	Eastgate, Gravesham
EYC 18/101	1st March 2018	Darenth Valley Golf Club
EYC 18/098	23rd February 2018	Oakwood House Hotel
EYC 18/102	2nd March 2018	Hadlow Manor Hotel
EYC 18/106	8th March 2018	Salomons

Contact Us

Threads of Success	www.ThreadsofSuccess.co.uk ThreadsofSuccess@kent.gov.uk
Sufficiency and Sustainability	Sufficiencyandsustainability@kent.gov.uk
Free for 2 (FF2) Team	Eyfreefor2@kent.gov.uk
30 Hours of Free Childcare	30HoursFreeChildcare@kent.gov.uk
Improvement and Standards	EYCImprovementServices@kent.gov.uk
Equality and Inclusion	EYInclusion@kent.gov.uk
Collaborations	EYCollaborations@kent.gov.uk
Emporium Plus	Emporiumplus@kent.gov.uk
Workforce Development	Earlyyearsworkforce.ask@kent.gov.uk
Kent Children and Families Information Service	Kentcfis@kent.gov.uk
Management Information	eyfe@kent.gov.uk
KELSI	http://www.kelsi.org.uk
Schools e-bulletin	http://www.kelsi.org.uk/ working_in_education/news.aspx

The Early Years and Childcare Bulletin is compiled and edited by Kent County Council's Early Years and Childcare Service. The next issue will be published in term 4