



# Early Years and Childcare Bulletin

October 2016



Kent County Council  
Early Years and Childcare Service

# Contents

Page 1	Welcome and Introduction Alex Gamby
Page 4	News and Updates
Page 15	Training and Services
Page 19	Contact Us

## Welcome and Introduction Alex Gamby

### Early Years Foundation Stage Profile 2016

We are happy to report that in 2016, 74.8% of children in Kent achieved a Good Level of Development (GLD) at the end of the EYFS. This is an increase of 1.8% since 2015 and a 12% improvement since 2013. Thank you to all Early Years and Childcare providers and schools that have supported children in these achievements.

### Achievement Gaps

#### Gender

Girls continue to out-perform boys with 82.2% of girls compared to 68% of boys achieving a GLD in 2016. The gender gap narrowed slightly from 15% in 2015 to 14% in 2016. Although this represents a marginally improved position, there is still work to be done to narrow the gap. Clearly it is a significant issue for us if a third of boys start Key Stage 1 not being well prepared for school and further learning.

#### Free School Meals (FSM)

In 2016 the percentage of FSM pupils achieving a GLD decreased slightly from 60% in 2015 to 59% in 2016. The FSM Achievement Gap widened to 18% in 2016 from 15% in 2015 which is clearly cause for concern.

#### Special Educational Needs (SEN)

The percentage of children with SEN achieving a GLD increased from 44% in 2015 to 50% in 2016, which is encouraging. The SEN achievement gap narrowed from 53.3% in 2015 to 52.5% which is very positive, although further progress needs to be made.

#### Children in Care (CiC)

The percentage of CiC looked after for more than twelve months achieving a GLD reduced from 46.7% in 2015 to 28.6% in 2016, which is very worrying and disappointing. The achievement gap for CiC widened from 26.5% in 2015 to 46.3% which is also a cause for significant concern.

## English as an Additional Language (EAL)

The Achievement Gap between those with EAL and all children has narrowed from 11.8% in 2015 to 7.7% in 2016, which is very positive.

You will be aware that the Department for Education ultimately decided against the new Baseline Assessment measure it had introduced with effect from September 2015. The EYFS Profile will now continue to be a statutory requirement for completion until at least 2017.

## Early Years National Funding Consultation

The Department for Education has consulted on some fundamental changes to Early Years funding which they plan to introduce from 1 April 2017. These changes are aligned with the Government's commitment to extend the Free Entitlement to 30 hours per week for the three and four year old children of eligible parents. The need to incentivise providers rather than compulsion is a key theme. The proposals aim to introduce a system that distributes the available funding in a fairer and more transparent way than the current one. These proposals will lead to greater consistency between local authorities and are a significant step towards a national funding formula for Early Years.

The consultation closed on 22 September and Kent County Council responded on behalf of all of its providers. Further information regarding the consultation can be found via the following web link: <https://consult.education.gov.uk/early-years-funding/eynff>. Under the Government's proposals, Kent's average funding rate per hour would reduce slightly from £4.53 to £4.48 per hour. Our modelling suggests that KCC maintained provision would be impacted most by this reduction. This has been an agenda item at the recent Briefing and Networking Sessions.



## Early Years and Childcare Provider Association

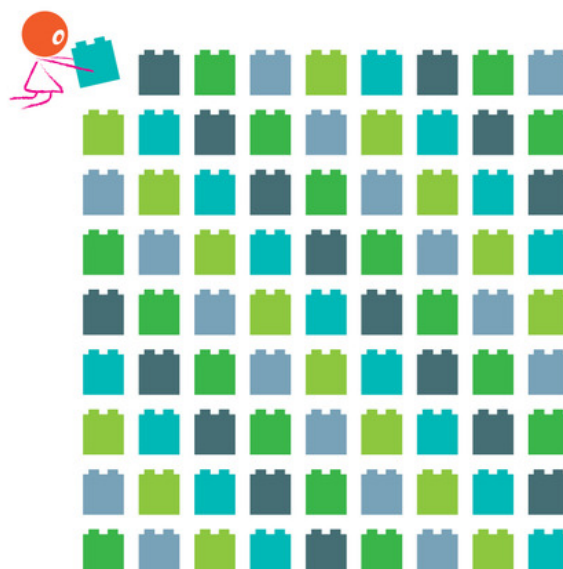
You may recall from previous Briefing and Networking Sessions that we asked for expressions of interest for representation on an Early Years and Childcare Provider Association. This has now had its inaugural meeting and agreed the following Terms of Reference:

- To promote a strategic and effective partnership between Early Years and Childcare providers and Kent County Council (KCC) in working towards the very best Early Years and Childcare provision in Kent
- To work in collaboration with KCC in determining the strategic direction for the ongoing development and improvement of Early Years and Childcare provision and services in Kent
- To provide an interface between KCC and Early Years and Childcare providers in order to promote a coherent approach to ensure a sufficient, sustained, high quality and inclusive Early Years and Childcare market
- To link with a wide range of internal and external agencies, partners and national bodies and be a representative voice for Kent Early Years and Childcare providers
- To support the continuing development of partnership working between KCC and providers, including formal collaborations, networks and alliances that support holistic improvement.

There is a membership of 16 which includes representation from:

- Each district
- Early Years and Childcare providers of each type of constitution i.e. private, voluntary, independent, maintained (i.e. schools)
- Early Years and Childcare providers of each type of provision i.e. Early Years sessional, full day care, year round, term time only, Out of School, childminders
- Early Years Teaching Schools

The actual membership is still being finalised and will be shared in the next edition of this Bulletin.



# News and Updates

## Nursery World Award Winners 2016

The Early Years and Childcare Service is delighted to announce that we are the winners of the Nursery World Awards 2016 for the Staff Resources category. The awards were celebrated on 24th September at The Brewery in London where we were up against tough competition from:

- Chatterbox Challenge – ICAN
- The ItKit, Learning and Training Consultancy
- Learning Journal, OneFile
- Magnetic Radiator Covers, Radwraps

Alex Gamby (Head of Early Years and Childcare in Kent) said:

‘It has been a huge privilege to have been nominated and been successful in winning the Nursery World Awards 2016 in the Staff Resources category. This is a welcome accolade for all the work which went into putting the toolkit together. I would like to thank Stella Nalini (schema specialist) for coordinating the work and all those who contributed, including D-Dees Day Nursery, Swale and am delighted to hear that Ofsted have already begun to reference use of the EFICL Toolkit in inspection reports’.

EFICL has also been shortlisted for the Children and Young People’s Awards (winner to be announced in November).

For information on how to access a copy of the ‘Award Winning’ EFICL Toolkit please visit [www.threadsofsuccess.co.uk](http://www.threadsofsuccess.co.uk) or contact the Threads Coordinator on 03000 422376.



## **Paediatric first aid training and newly qualified staff**

Following the Department for Education consultation on 'Paediatric first aid requirements in the statutory framework for the Early Years Foundation Stage' the Government is now proceeding with this requirement in the Early Years Foundation Stage for newly qualified Early Years staff (with full and relevant level 2 or level 3 childcare qualification) to also hold a current Paediatric First Aid (PFA) or emergency PFA certificate in order to be included in the required staff: child ratios in an Early Years setting.

Childcare staff will be given a three month 'grace' period to complete the training after starting with a new provider. The EYFS will include an exception on equal opportunities grounds for new staff with a disability that would allow them to be included in the adult: child ratios without a PFA or emergency PFA certificate provided that the EYFS requirements are otherwise met. These staff members will, where possible, be required to attend PFA training, to learn what they can and receive a certificate of attendance.

It is intended that a revised EYFS which reflects the proposed changes will be published shortly alongside the amended regulations.

Full consultation report and Government response can be found on <https://www.gov.uk/government/consultations/paediatric-first-aid-eyfs-statutory-framework-amendments>

## **Ofsted safeguarding handbook updated**

Ofsted's publication, 'Inspecting Safeguarding in Early Years, Education and Skills' has been updated. The handbook sets out what inspectors must consider when inspecting safeguarding and outlines the evidence they will look for. It also sets out the judgements that inspectors will make and on which they will report.

The handbook was updated in August 2016 and a document summarising the main changes has also been published. It should be read alongside the 'Common Inspection Framework: Education, Skills and Early Years' and the individual inspection remit handbooks. You can find the updated document here <https://www.gov.uk/government/publications/inspecting-safeguarding-in-early-years-education-and-skills-from-september-2015>



## **Ofsted inspection cycle**

Ofsted are continuing with their inspection cycle and are currently inspecting new registrations and settings previously judged as satisfactory in Kent. In addition the new inspection cycle began in September 2016.

## **Ofsted inspection reports – common recommendations**

Common recommendations following inspections of both Early Years and Out of School settings have changed very little during the past year. For both setting types, a common recommendation has been a need for the improvement of self-evaluation and monitoring systems. You can find full details of other common recommendations in the July 2016 edition of the Bulletin.

Please visit the Threads of Success website or call the Threads of Success Co-ordinator for information on current strategic improvement visits and training packages that will meet your needs. To discuss your requirements contact the Threads of Success mailbox.

## **Safety information on socket covers**

In July the Department of Health issued a warning around the use of socket inserts in health and social care premises. For further information please see the links below:

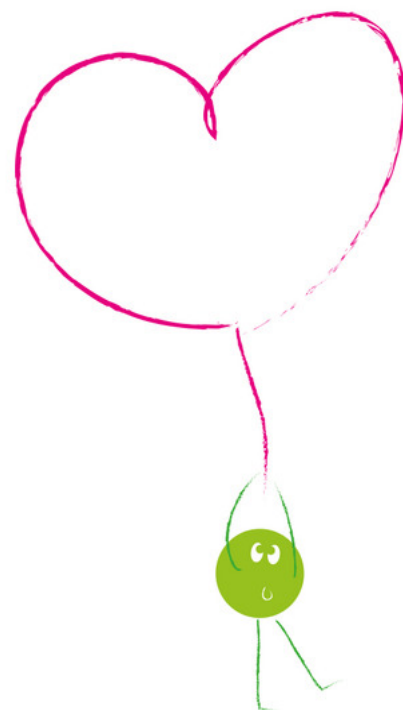
[www.hfs.scot.nhs.uk/publications/1468411851-EFA%202016%20002.pdf](http://www.hfs.scot.nhs.uk/publications/1468411851-EFA%202016%20002.pdf)

<http://www.fatallyflawed.org.uk/>

## **Information on button batteries**

For information on button batteries and potential dangers to children visit

[http://www.bbc.co.uk/news/health-37410343?mc\\_cid=ab204c9fab&mc\\_eid=aba62c6a89](http://www.bbc.co.uk/news/health-37410343?mc_cid=ab204c9fab&mc_eid=aba62c6a89)



## **Early Years Pupil Premium (EYPP) reminder from Management Information**

As you are aware eligibility for EYPP has to be checked each year and the new online form is now active for autumn 2016 EYPP applications.

Please remind all parents/carers that new EYPP applications must be made for all those children that received EYPP in the summer term and remain at your setting along with any new children that started this September.

We would urge providers to encourage parents to make their applications as soon as possible to enable providers to get the maximum benefit from this funding for their children.

We will be adding a new question to the application asking parents if they will allow Kent County Council to hold their information and recheck their eligibility at the start of the next academic year. Where parents agree to this, provided that their circumstances remain the same, they will not have to submit further applications for EYPP.

## **Prevent Duty**

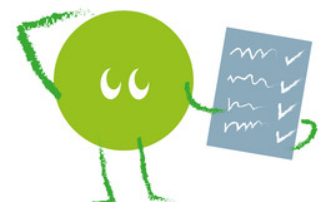
The following information will shortly be available to download as a Pocket Guide on the Useful Information and Resources page, Partnership and Integration on KELSI.

The Prevent strategy is part of the overall UK counter-terrorism strategy, CONTEST. The aim of the Prevent strategy is to reduce the threat to the UK by stopping people becoming terrorists or supporting terrorism. The strategy focuses on ideology, individuals and institutions.

Key Points:

- Duty under section 26 Counter Terrorism and Security Act 2015
- All staff should demonstrate an understanding of risks and threats
- Four overriding themes – leadership, working in partnership, staff capabilities and information sharing
- Deals with all kinds of terrorist threat
- CONTEST – four P's, Prepare, Protect, Pursue and PREVENT

**Channel** forms a key part of the Prevent strategy. It is a multi-agency approach to identify and provide support to individuals who are at risk of being drawn into terrorism.





A Kent Channel panel meets monthly to consider cases. Agencies are required to share information in order to assess the risk using the vulnerability assessment framework for Channel.



A referral form is available on KSCB website, which is sent to Kent Police for initial assessment.

#### Relevant Links

- [www.gov.uk/government/publications/prevent-duty-guidance](http://www.gov.uk/government/publications/prevent-duty-guidance)
- [www.gov.uk/government/publications/channel-guidance](http://www.gov.uk/government/publications/channel-guidance)
- [www.kscb.org.uk/guidance/extremism-and-radicalisation2](http://www.kscb.org.uk/guidance/extremism-and-radicalisation2)
- <http://www.kelsi.org.uk/support-for-children-and-young-people/child-protection-and-safeguarding/prevent-within-schools>

### **A new online eligibility checking system for Free for Two (FF2)**

We are pleased to report that the summer term ended with 66% take-up rate across the county. This is against a national average of 68% according to statistics published by the Department for Education. This equates to 4013 children in a FF2 place in Kent and is an increase of almost 8% for the same period last year. Further work needs to be done to improve take-up and for the autumn term, 5814 potentially eligible families are shown on the DWP list.

The new in-house online Eligibility Checking System (ECS) was launched on Monday 18 July. The new system provides an instant checking service direct to parents applying under the economic criteria. The service is also available to childcare providers and Children's Centre staff applying on behalf of a parent under the economic criteria. The system is working well and we strongly encourage you to complete all FF2 applications online. The new service offers a faster, simpler, easier and more convenient application process, speedier notification of entitlement and computer assisted form validation to reduce application errors. Families applying under the SEN/Care and Adoption criteria can also apply online but the application will be manually checked by a member of the FF2 team in the usual way.

Please be aware that if you are still using the paper application form, do ensure that it is the most recent copy which includes a statement about EYPP at the bottom.

As always, the team are happy to assist with any FF2 issues. Please do get in touch at [eyfreefor2@kent.gov.uk](mailto:eyfreefor2@kent.gov.uk). When calling, remember to have all the relevant information to hand, particularly the child's name and date of birth.

## **Charity fundraising**

Before you start to raise funds for your charity, you will need to prove the charity's income each year will be over £5,000 if you want to register with the Charity Commission, unless it is a charitable incorporated organisation (CIO) which must register whatever its income. You can raise money before you become a charity as long as you make it clear that you are not yet registered.

The Charity Commission has published new guidance for charity trustees about fundraising from the public, CC20. The guidance sets out six principles to help trustees comply with their legal status when overseeing their charity's fundraising, it also includes a checklist for trustees to evaluate their charity's performance against the legal requirements and good practice recommendations set out in the guidance.

If you wish to discuss this or anything else regarding your committee, please contact your Childcare Sufficiency Officer.

## **Small Steps: Supporting Bereaved Young Children in Pre-school Settings**

Small Steps is now available to view as an electronic document which is centrally funded for Kent settings and schools. This document has been refreshed and rebranded as part of the Threads of Success range of products which support Early Years providers in Kent to meet the needs of the range of children in their care.

Visit the Threads of Success website to view the document. You can also purchase hard copies here: <http://www.threadsofsuccess.co.uk/small-steps-1>

## **Early Years Foundation Stage Profile (EYFSP) and assessment**

The government announced in August 2016 that the EYFSP will remain a statutory assessment for this academic year. More information can be found at <https://www.gov.uk/government/publications/sta-assessment-update-11-august-2016/11-august-2016-schools>

The Standards and School Improvement Service is encouraging the use of the tool Early Excellence Assessment Tracker. Please see KELSI for more information. <http://www.kelsi.org.uk/news-and-events/news/early-years/eyfs-assessment-and-reporting-201617>

## **SEND Local inspection – what settings need to know**

In May 2016, the two inspectorates, Ofsted and the Care Quality Commission (CQC), started a new type of joint inspection. The aim is to hold local areas to account and champion the rights of children and young people. Under the local area Special Educational Needs or Disabilities (or both) Inspection Framework, inspectors review how local areas meet their responsibilities to children and young people (from birth to age 25) who have special educational needs or disabilities (or both).

[https://www.gov.uk/government/uploads/system/uploads/attachment\\_data/file/539001/Joint\\_inspections\\_of\\_local\\_area\\_special\\_educational\\_needs\\_or\\_disabilities\\_or\\_both\\_provision.pdf](https://www.gov.uk/government/uploads/system/uploads/attachment_data/file/539001/Joint_inspections_of_local_area_special_educational_needs_or_disabilities_or_both_provision.pdf)

### **The inspection process**

Over the course of the five day inspection, inspectors will meet managers and leaders from the area's education, health and social care services and look at children's case files. They will review the support provided by the local area for some individual children and young people to better understand how well the local area meets its responsibilities overall. They will also visit a number of Early Years settings, schools, further education providers and specialist services. During these visits, inspectors will also spend time speaking to children, young people and their parents or carers.

### **Key message**

Nationally there is massive activity related to the SEND changes but what difference does it make? When the team visit Kent, they will be looking for evidence that activity is leading to good outcomes, not simply keeping us busy.

The framework evaluates our effectiveness in relation to the following:

- Identification of the right children and young people at the right time; those with SEN and those who have a disability
- Evidence that what we do is effective for those with SEN and those who are disabled
- Our local arrangements mean young people achieve better outcomes
- Kent has built-in evaluation to the activity we are doing because we want to make a difference; improving outcomes

What do we think inspectors will want to talk about with settings chosen for a visit?

1. How (in your role as provider, NHS, care) you identify the right children, and if it applies to you: sensory impaired children, young offenders?
2. How do you ensure there is good understanding of your duties or role: tools, systems and funding e.g. Best Practice Guidance, EY LIFT, your referral and assessment arrangements, use of SCARF, engagement with Early Years and Childcare Equality and Inclusion advisers, Specialist teachers and other multi-agency colleagues across health, education and social care.
3. How do we know what good outcomes are?
4. What has changed as a result of the reforms and EHCPs?

See Kent.gov for the strategy and local offer:

<http://www.kent.gov.uk/education-and-children/special-educational-needs>

See KELSI for guidance and documents:

<http://www.kelsi.org.uk/inclusion-and-special-education-needs/special-educational-needs>

5. Levels of satisfaction from parents and young people with the new system
6. How are we joining up what we all do? For example, what happens for a pre-school child with social care involvement, or a school aged child with health needs?

Remember this isn't an inspection of you/your setting, but it is looking at how well we are working together to make a difference for the most vulnerable children.



The Early Years and Childcare Service Equality and Inclusion Team continues to be available to support you to ensure you are fully prepared to meet the needs of the range of children in your care. Visit the Threads of Success website and Equality and Inclusion pages of KELSI for further information.

## **Recent research regarding Vulnerable Children**

### **Unknown Children – Destined for Disadvantage**

Key findings from this report have led to a number of recommendations for all stakeholders including schools, settings and childminders, local authorities, the Department of Education and Ofsted.

The report recommends that schools, settings and childminders should:

- Ensure that key information, including early assessments, is shared promptly at points of transition so that the needs of the most disadvantaged children are known quickly
- Review their use of the Early Years Pupil Premium to ensure that support is focused on improving the areas of development that will help a child to catch up.

### **The Lost Boys Report – Save the Children**

This report identifies that despite the hard work of schools and Early Years settings, combined with effective investment, policies and programmes which have produced an upward trend in outcomes and equality over the last decade the gender gap has not narrowed. This means that ‘over the past ten years we have allowed nearly a million five year old boys to start primary school behind, making it harder for them to ever catch up’.

### **High Achieving White Working Class (HAWWC) Boys Report**

The Key message from the High Achieving White Working Class (HAWWC) Boys Project states:

Adult’s Parenting Resilience and children’s Academic Resilience are both made of ordinary rather than extraordinary processes. They develop in spite of adversity when basic protective systems in human development are operating to counteract the threats to development. In short, both of these types of resilience emerge from a process that involves ordinary, adaptable and transferable behaviours and resources which are available to children and their parents.

The report clearly lists how Early Years settings can work in partnership with families and other agencies to enhance the educational achievement of young, white working class boys in order to close the gap in their attainment on entry into compulsory schooling, improve access to the free early education offer and enable greater social mobility.

## **‘Threads of Success’ Improvement and Achievement Award Celebration for the 2016 Cohort**

Following another successful year we are pleased to announce that the following Early Years settings have achieved the Improvement and Achievement Award:

- The Little Shepherds Pre-School - Developing Level
- Tinkerbells Early Years - Establishing Level
- Castle Hill Village Nursery - Enhancing level
- Chevening School Nursery - Enhancing Level
- Culverstone Green School Nursery - Enhancing Level
- Hadlow Community Pre-School - Enhancing Level
- Ladybirds Pre-School - Enhancing Level
- Sturry Pre-School - Enhancing Level
- The Old School House (Headcorn) Ltd - Enhancing Level

We would like to congratulate all the settings on their hard work, commitment to improving quality and the difference they are making in improving outcomes for children and narrowing the achievement gap.

For more information please follow the link below:

<http://www.threadsofsuccess.co.uk/improvement-and-achievement-award/>

Email [threadsofsuccess@kent.gov.uk](mailto:threadsofsuccess@kent.gov.uk) or call 03000 422376



### **Sustainability and Creation of Places**

We continue to ensure that provision in Kent can be sustained and further developed. The key questions for providers are:

Are you financially sustainable?

Are the numbers of children attending your setting lower than you expected?

Are your costs higher than expected, for example your annual rent increase?

Most businesses go through bad patches where the numbers of children attending are low and the costs are high. A key focus of the Early Years and Childcare Service is to support Kent's private, voluntary and independent provision in providing sufficient childcare places.



We have a team of Childcare Sufficiency Officers (CSOs) one for each district who can help you with the following:

- 1) Business Health Check – Completing this document gives you an overview of your business
- 2) Cashflow – By plotting your proposed actual income and expenses on a monthly basis any problem months can be identified and appropriate action taken in a timely manner
- 3) How to Break Even - Highlights whether a business is covering its costs with ideas on reducing costs and increasing income
- 4) Bad Debts – How to prevent, manage and reduce your bad debts.

Please pass this information to your finance officer, administrator and treasurer.

Contact us now and we can work with you to help manage any future issues: [Threadsofsuccess@kent.gov.uk](mailto:Threadsofsuccess@kent.gov.uk)

### **Working in partnership with Children's Centres**

Those of you attending the Early Years Briefing and Networking Sessions in June will have had the opportunity to hear from Early Help and Preventative Services. If you wish to make contact with your local Children's Centres contact details for the Delivery Managers can be found on KELSI.

### **Kent Children and Families Information Service can help providers**

Kent Children and Families Information Service (CFIS) provides free, confidential and impartial information and advice to parents, carers and members of the public about Early Years and childcare services in Kent.

CFIS can help you as a provider by:

- Advertising your setting details online, via email or by telephone to families looking for childcare in your area
- Advertising setting events through their Facebook page [www.facebook.com/kcccfis](https://www.facebook.com/kcccfis)
- Advertising childcare job vacancies through the KCC website
- Supporting all childcare providers by offering advice, information and assistance.

To contact CFIS about any of the above please call 03000 41 23 23 or email [kentcfis@kent.gov.uk](mailto:kentcfis@kent.gov.uk)

## **The second Early Years and Childcare annual Out of School Conference The Power of Play**

The Early Years and Childcare Service successfully hosted its second annual Out Of School Conference in July. Practitioners from all over Kent offering Out of School provisions including breakfast clubs, after school clubs and holiday play schemes were invited to attend.

Elizabeth Jarman, sole provider of Communication Friendly Spaces training, spoke inspiringly about the importance of interaction, communication and the value of creating and supporting effective play provisions.

Stuart Lester, Senior Lecturer in Play and Playwork at the University of Gloucestershire, gave an engaging talk considering the everyday ways in which children co-create moments of playing and how by doing so, children generate new ways of moving and use their bodies in novel ways to simply make life more vibrant.

During the day delegates attended two workshops, choosing from a range of options. The workshops renewed motivation and enthusiasm to improve resources and activities for children. Delegates left with inspirational, practical ideas and new concepts to implement in their Out of School practices.

We are pleased to announce that as part of our annual conference programme the third Out of School Conference will take place in June 2017.

Watch this space to make sure you don't miss the opportunity to attend.

## **Training and Services from Threads of Success**

Recent research highlights the importance of effective tracking and monitoring of children's progress, particularly those at risk of delay, in order to narrow the achievement gap between these children and their peers.

The Kent Progress Tracker, a highly regarded tool, is available centrally funded, for all Kent settings, to support with tracking and monitoring the progress of individual and groups of children. A 200 line version is now available for larger settings and this can be requested via the Threads of Success website.

Also available is an updated tracker which includes three additional filters: Summer Born, Children in Care (CiC) and Gypsy Roma Traveller children. The updated tracker with the additional filters, is chargeable and available at the reduced cost of £100 to Kent settings in the original and the 200 line version.

We also offer training courses, workshops and bespoke visits to support with all aspects of assessment in the Early Years. Further information is available on the Threads of Success website.

The following training courses and workshops are available to book via <https://cpdearlyyears.kentcpdonline.org.uk>  
Book now to avoid disappointment.

### **Walking in the Shoes of Giants - Supporting and Meeting the Needs of Two Year Olds**

Wednesday 16 November 2016 09:30 - 12:30 The Ark Christian Centre, Dover – event code EYC 16/252

Thursday 24 November 2016 09:30 - 12:30 Howfield Manor Hotel, Canterbury – event code EYC 16/257

Saturday 3 December 2016 09:30 - 12:30 Oakwood House Hotel, Maidstone – event code EYC 16/256

### **Characteristics of Effective Teaching and Learning**

Monday 28 November 2016 09:30 - 16:00, Ashford Business Hub – event code EYC 16/250

### **Leadership and Management Professional Development Programme (3 Day Course)**

Howfield Manor Hotel, Canterbury – event code EYC 17/029

Day 1 - Wednesday 18 January 2017

Day 2 - Thursday 19 January 2017

Day 3 - Thursday 9 March 2017

### **Little Scientists**

Monday 7 November 2016 09:30 - 12:30 Aylesham Business Hub, Nr Canterbury - event code EYC 16/253

Friday 9 December 2016 09:30 - 12:30 Oakwood House Hotel, Maidstone – event code EYC 16/249

### **Slugs and Snails: Supporting Boys Learning and Development**

Saturday 12 November 2016 09:30 - 12:30, Holiday Inn - Ashford Central - event code EYC 16/255

### **Why are Clouds Fluffy? - Sustained Shared Thinking**

Tuesday 15 November 2016 09:30 - 16:30 Hadlow Manor Hotel – event code EYC 16/258

### **Why Love Matters, Supporting the Holistic Needs of Babies and Under Two's**

Monday 21 November 2016 09:30 - 12:30 Hadlow Manor Hotel - event code EYC 16/251

### **Available Spring 2017**

Leaders of Learning 5 Day Professional Development Programme – Outstanding Practitioners Make the Difference

The overarching aim of the programme is to help each practitioner release the enormous potential that is inside them in order to lead highly effective educational provisions for children, as well as understanding how they can build the capacity of those that work alongside them.

A 5 day programme, delivered over 5 months is aimed at those practitioners leading the practice within a setting or room.

“An inspirational course that helps us as practitioners reflect and move forward with determination” Early Years Teacher

“I feel I have really grown in confidence, found my voice...” Early Years Practitioner

Available at the reduced rate of £395.00 per delegate for the course via CPD Online.

Check the Threads of Success website for full details [www.threadsofsuccess.co.uk](http://www.threadsofsuccess.co.uk) and to register your expression of interest.

### **Briefing and Networking Sessions**

Our regular Briefing and Networking Sessions provide a good opportunity to keep your setting and staff up to date and to network with colleagues from other settings.

We run sessions specifically for Early Years settings and schools and also specifically for settings providing Out of School care including schools.

Delegates attending these sessions have found them valuable, so why not book a place via CPD Online now.

"I like the time of the event and the mix of schools and early years settings"

"Great speaker, very relevant, real and informative"

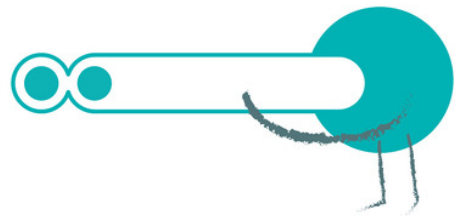
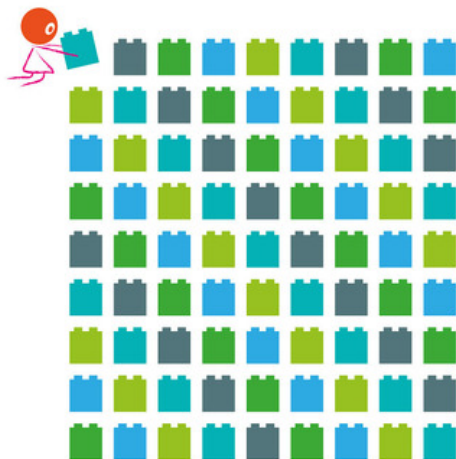
" I enjoyed networking with other professionals at the end of the session"

There is one remaining event for the October/November round of Early Years Sessions:

EYC 16/198 01/11/2016 Salomons Tunbridge Wells Tunbridge Wells

Agenda items include:

- Early Years Foundation Stage Profile 2016
- Briefing and discussion on the Ofsted report: Unknown Children – Destined for Disadvantage
- Early Years National Funding Consultation: Briefing and implications for Kent



## Out of School Briefing and Networking Sessions

Agenda items to include:

- Updates from the Early Years and Childcare Service
- Update on Ofsted Safeguarding Handbook
- Ofsted analysis from recent inspections
- An opportunity to share information, ideas and issues

EYC 16/219 15/11/16 Inn on the Lake Gravesham

EYC 16/220 17/11/16 Hadlow Manor Hotel Tonbridge & Malling

EYC 16/218 24/11/16 The Whitstable Castle & Gardens Canterbury

EYC 16/217 22/11/16 Kent Invicta Chamber of Commerce Ashford

# Contact Us

**Threads of Success**

[www.ThreadsofSuccess.co.uk](http://www.ThreadsofSuccess.co.uk)  
[ThreadsofSuccess@kent.gov.uk](mailto:ThreadsofSuccess@kent.gov.uk)

**Sufficiency and Sustainability**

[Sufficiencyandsustainability@kent.gov.uk](mailto:Sufficiencyandsustainability@kent.gov.uk)

**Free for 2 (FF2) Team**

[Eyfreefor2@kent.gov.uk](mailto:Eyfreefor2@kent.gov.uk)

**Improvement and Standards**

[EYCIImprovementServices@kent.gov.uk](mailto:EYCIImprovementServices@kent.gov.uk)

**Equality and Inclusion**

[EYInclusion@kent.gov.uk](mailto:EYInclusion@kent.gov.uk)

**Collaborations**

[EYCollaborations@kent.gov.uk](mailto:EYCollaborations@kent.gov.uk)

**Emporium Plus**

[Emporiumplus@kent.gov.uk](mailto:Emporiumplus@kent.gov.uk)

**Workforce Development**

[Earlyyearsworkforce.ask@kent.gov.uk](mailto:Earlyyearsworkforce.ask@kent.gov.uk)

**Kent Children and Families  
Information Service**

[Kentcfis@kent.gov.uk](mailto:Kentcfis@kent.gov.uk)

**Management Information**

[eyfe@kent.gov.uk](mailto:eyfe@kent.gov.uk)

**KELSI**

<http://www.kelsi.org.uk>

**Schools e-bulletin**

[http://www.kelsi.org.uk/working\\_in\\_eudcation/news.aspx](http://www.kelsi.org.uk/working_in_eudcation/news.aspx)

The Early Years and Childcare Bulletin is compiled and edited by Kent County Council's Early Years and Childcare Service. The next issue will be published in Term 2