

School Workforce Census

Autumn 2012

Based on 474 KCC schools as at Nov 12 Census Date

412 Primary, 39 Secondary & 23 Special

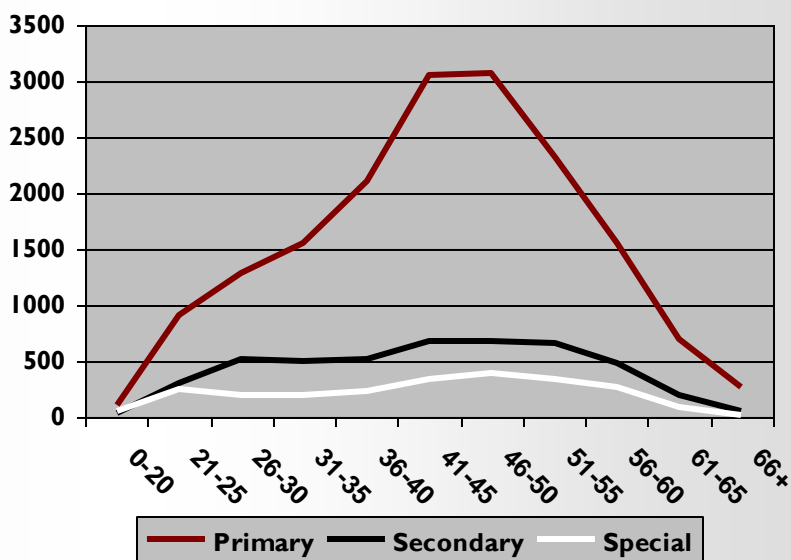
School Workforce Census Nov 2012 Totals

Headcount by School Type and Job Group

| | Primary | Secondary | Special | Total |
|--------------|---------------|--------------|--------------|---------------|
| Teaching | 6,028 | 2,496 | 551 | 9,075 |
| Non Teaching | 10,895 | 2,117 | 1,824 | 14,836 |
| Total | 16,923 | 4,613 | 2,375 | 23,911 |

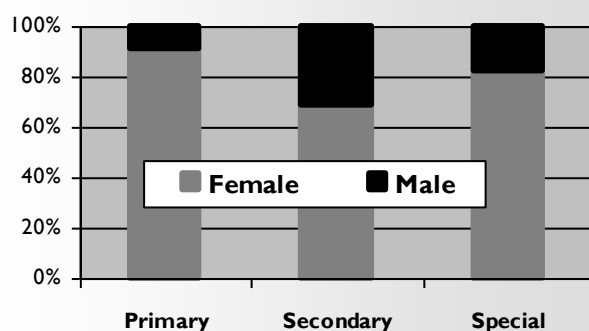
Headcount by School Type and Age

| Age Group | Primary | Secondary | Special | Total |
|--------------|---------------|--------------|--------------|---------------|
| 0-20 | 105 | 43 | 59 | 207 |
| 21-25 | 918 | 306 | 249 | 1,473 |
| 26-30 | 1,282 | 512 | 191 | 1,985 |
| 31-35 | 1,554 | 494 | 197 | 2,245 |
| 36-40 | 2,100 | 525 | 228 | 2,853 |
| 41-45 | 3,051 | 673 | 344 | 4,068 |
| 46-50 | 3,065 | 671 | 396 | 4,132 |
| 51-55 | 2,319 | 667 | 335 | 3,321 |
| 56-60 | 1,562 | 480 | 263 | 2,305 |
| 61-65 | 696 | 191 | 94 | 981 |
| 66+ | 271 | 51 | 19 | 341 |
| Total | 16,923 | 4,613 | 2,375 | 23,911 |



Headcount by School Type and Gender

| | Primary | Secondary | Special | Total |
|---------------|---------------|--------------|--------------|---------------|
| Female | 15,411 | 3,170 | 1,954 | 20,535 |
| Male | 1,512 | 1,442 | 421 | 3,375 |
| Not Specified | 0 | 1 | 0 | 1 |
| Total | 16,923 | 4,613 | 2,375 | 23,911 |



Sickness Totals by Job group

Sickness period is Sep 2011 – Aug 2012

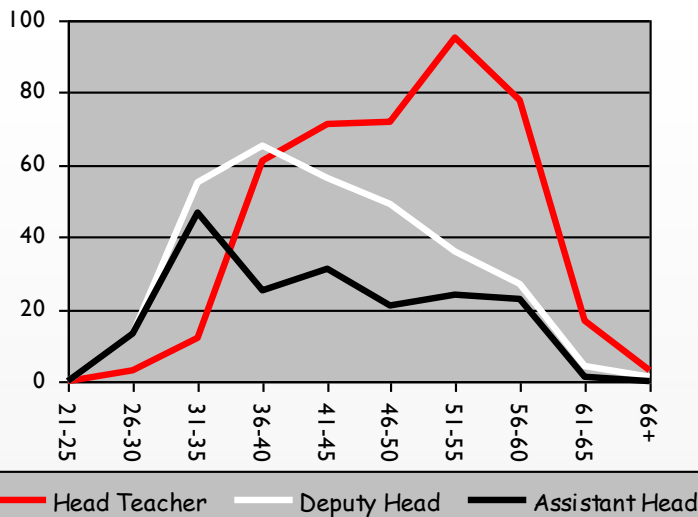
Note : DfE criteria is that Sickness data collection in the SWC is not mandatory for Support Staff and absence is included for contracts that ended before Nov 12 census date

| | Teaching Staff | Support Staff | Total |
|--|----------------|---------------|--------|
| Number of Staff current as at 6th Nov 2012 | 9,075 | 14,836 | 23,911 |
| Total Sick days Sep 11 - Aug 12 | 38,928 | 51,011 | 89,939 |

Age Profile - Leadership by Phase

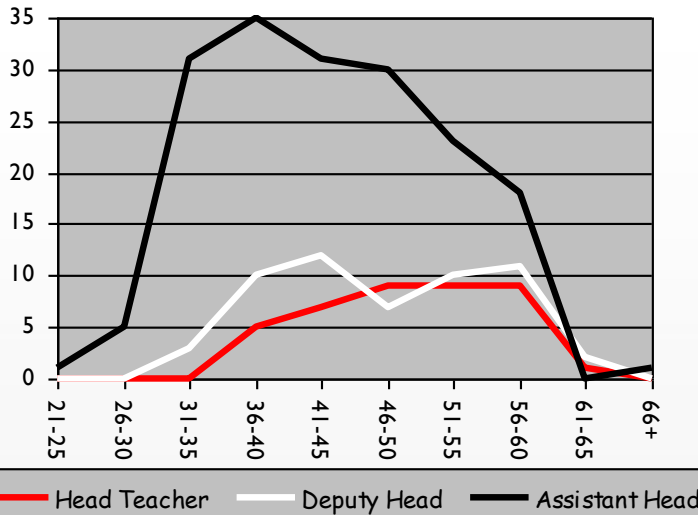
Primary

| Age Group | Head Teacher | Deputy Head | Assistant Head | Total |
|--------------|--------------|-------------|----------------|------------|
| 21-25 | 0 | 0 | 0 | 0 |
| 26-30 | 3 | 13 | 13 | 29 |
| 31-35 | 12 | 55 | 47 | 114 |
| 36-40 | 61 | 65 | 25 | 151 |
| 41-45 | 71 | 56 | 31 | 158 |
| 46-50 | 72 | 49 | 21 | 142 |
| 51-55 | 95 | 36 | 24 | 155 |
| 56-60 | 78 | 27 | 23 | 128 |
| 61-65 | 17 | 4 | 1 | 22 |
| 66+ | 3 | 1 | 0 | 4 |
| Total | 412 | 306 | 185 | 903 |



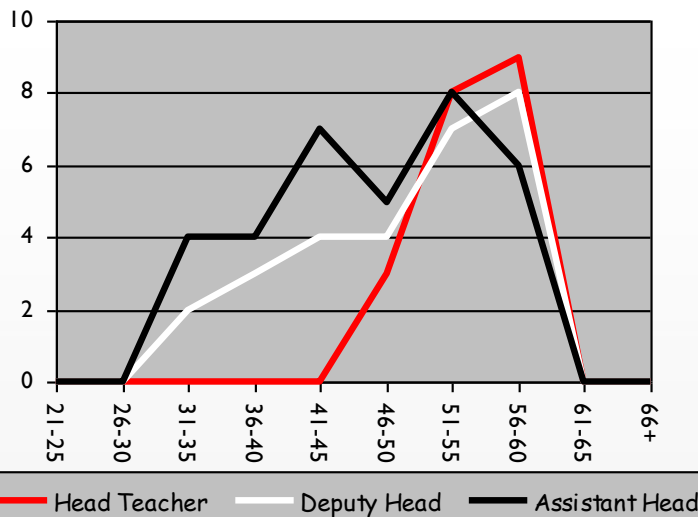
Secondary

| Age Group | Head Teacher | Deputy Head | Assistant Head | Total |
|--------------|--------------|-------------|----------------|------------|
| 21-25 | 0 | 0 | 1 | 1 |
| 26-30 | 0 | 0 | 5 | 5 |
| 31-35 | 0 | 3 | 31 | 34 |
| 36-40 | 5 | 10 | 35 | 50 |
| 41-45 | 7 | 12 | 31 | 50 |
| 46-50 | 9 | 7 | 30 | 46 |
| 51-55 | 9 | 10 | 23 | 42 |
| 56-60 | 9 | 11 | 18 | 38 |
| 61-65 | 1 | 2 | 0 | 3 |
| 66+ | 0 | 0 | 1 | 1 |
| Total | 40 | 55 | 175 | 270 |



Special

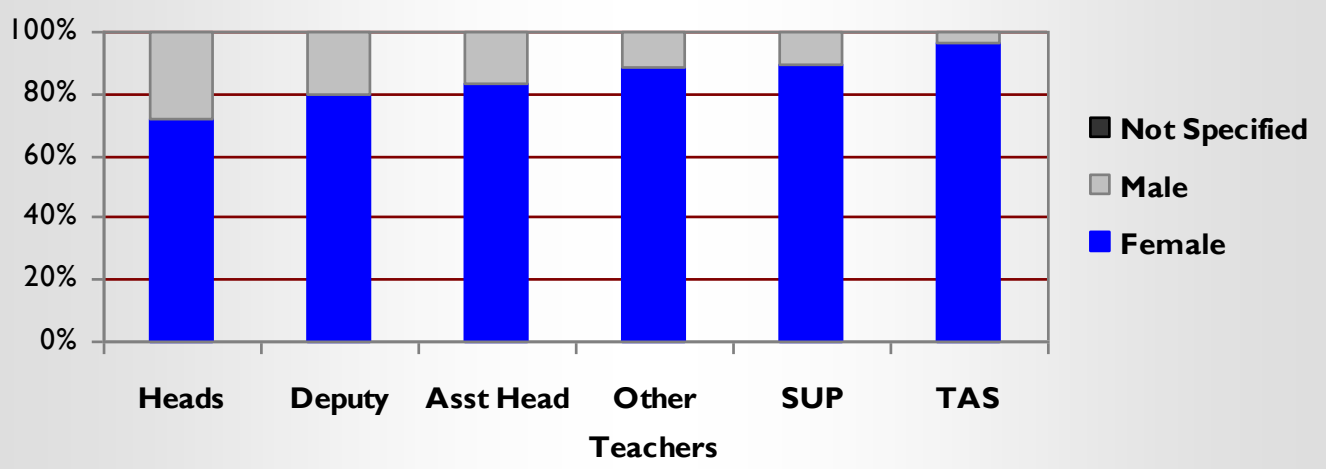
| Age Group | Head Teacher | Deputy Head | Assistant Head | Total |
|--------------|--------------|-------------|----------------|-----------|
| 21-25 | 0 | 0 | 0 | 0 |
| 26-30 | 0 | 0 | 0 | 0 |
| 31-35 | 0 | 2 | 4 | 6 |
| 36-40 | 0 | 3 | 4 | 7 |
| 41-45 | 0 | 4 | 7 | 11 |
| 46-50 | 3 | 4 | 5 | 12 |
| 51-55 | 8 | 7 | 8 | 23 |
| 56-60 | 9 | 8 | 6 | 23 |
| 61-65 | 0 | 0 | 0 | 0 |
| 66+ | 0 | 0 | 0 | 0 |
| Total | 20 | 28 | 34 | 82 |



GENDER

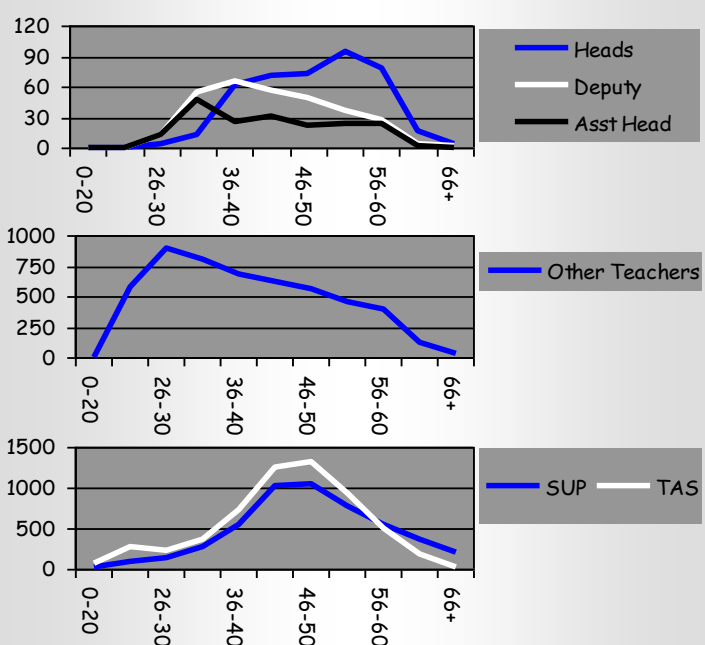
Primary

| Gender | Heads | Deputy | Asst Head | Other Teachers | SUP | TAS | Total |
|---------------|------------|------------|------------|----------------|-------------|-------------|--------------|
| Female | 298 | 243 | 154 | 4555 | 4485 | 5676 | 15411 |
| Male | 114 | 63 | 31 | 570 | 541 | 193 | 1512 |
| Not Specified | 0 | 0 | 0 | 0 | 0 | 0 | 0 |
| Total | 412 | 306 | 185 | 5125 | 5026 | 5869 | 16923 |



AGE

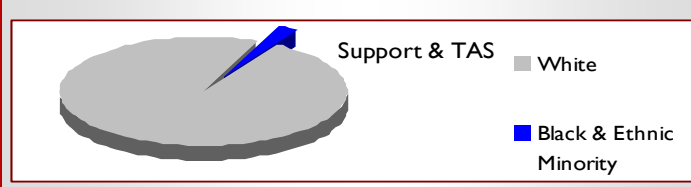
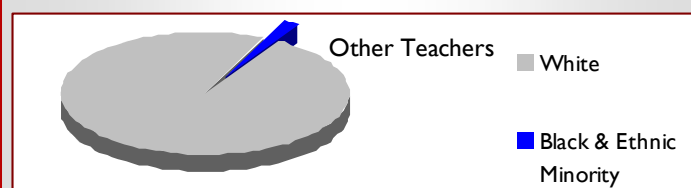
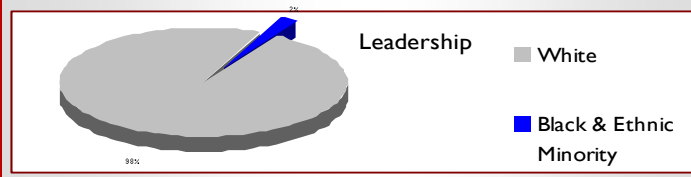
| Age Group | Heads | Deputy | Asst Head | Other Teachers | SUP | TAS | Total |
|--------------|------------|------------|------------|----------------|-------------|-------------|--------------|
| 0-20 | 0 | 0 | 0 | 0 | 34 | 71 | 105 |
| 21-25 | 0 | 0 | 0 | 573 | 82 | 263 | 918 |
| 26-30 | 3 | 13 | 13 | 890 | 132 | 231 | 1282 |
| 31-35 | 12 | 55 | 47 | 808 | 269 | 363 | 1554 |
| 36-40 | 61 | 65 | 25 | 685 | 539 | 725 | 2100 |
| 41-45 | 71 | 56 | 31 | 626 | 1020 | 1247 | 3051 |
| 46-50 | 72 | 49 | 21 | 563 | 1050 | 1310 | 3065 |
| 51-55 | 95 | 36 | 24 | 447 | 774 | 943 | 2319 |
| 56-60 | 78 | 27 | 23 | 387 | 544 | 503 | 1562 |
| 61-65 | 17 | 4 | 1 | 121 | 369 | 184 | 696 |
| 66+ | 3 | 1 | 0 | 25 | 213 | 29 | 271 |
| Total | 412 | 306 | 185 | 5125 | 5026 | 5869 | 16923 |



ETHNICITY

| | White | Black & Ethnic Minority | Total |
|----------------|---------------|-------------------------|---------------|
| Heads | 401 | 5 | 406 |
| Deputy | 297 | 6 | 303 |
| Asst Head | 179 | 6 | 185 |
| Other Teachers | 4,969 | 91 | 5,060 |
| SUP | 4,862 | 111 | 4,973 |
| TAS | 5,698 | 125 | 5,823 |
| Total | 16,406 | 344 | 16,750 |

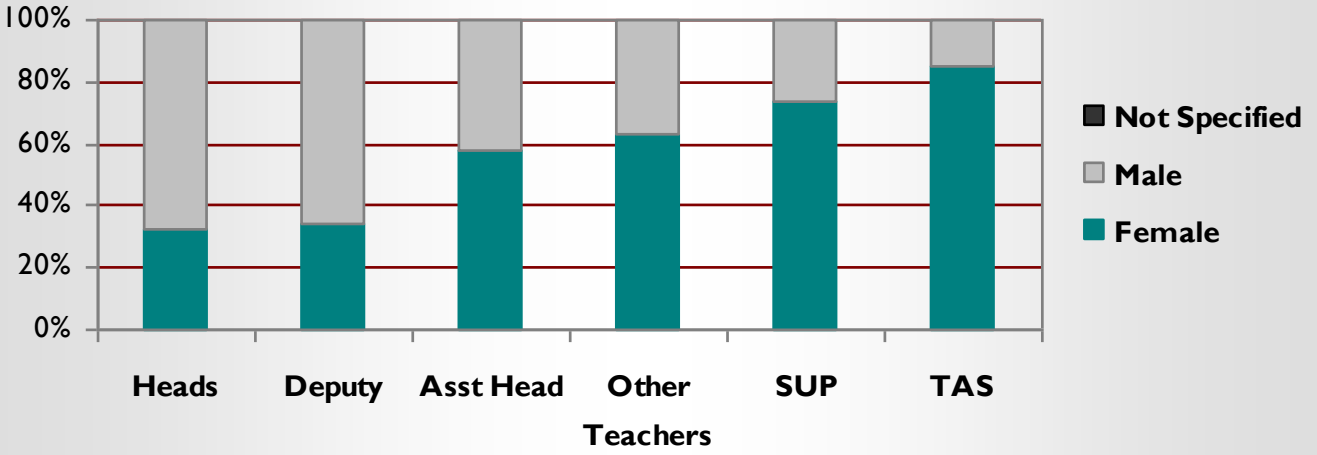
Does not include Refused or Not Obtained



GENDER

Secondary

| Gender | Heads | Deputy | Asst Head | Other Teachers | SUP | TAS | Total |
|---------------|-----------|-----------|------------|----------------|-------------|------------|-------------|
| Female | 13 | 19 | 101 | 1399 | 1068 | 570 | 3170 |
| Male | 27 | 36 | 74 | 826 | 377 | 102 | 1442 |
| Not Specified | 0 | 0 | 0 | 1 | 0 | 0 | 1 |
| Total | 40 | 55 | 175 | 2226 | 1445 | 672 | 4613 |



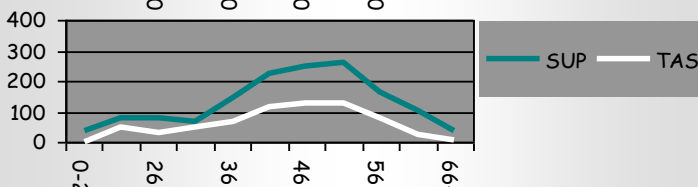
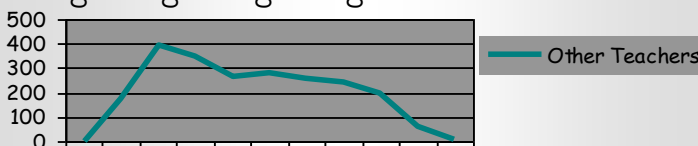
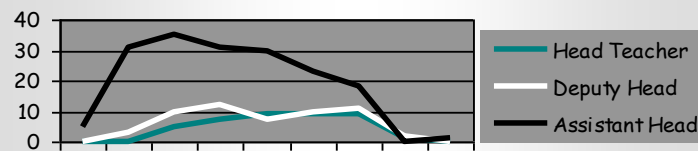
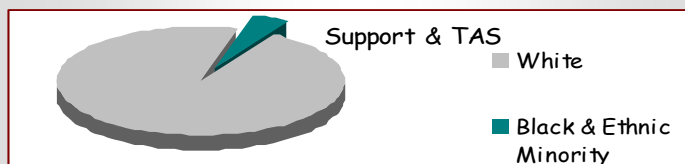
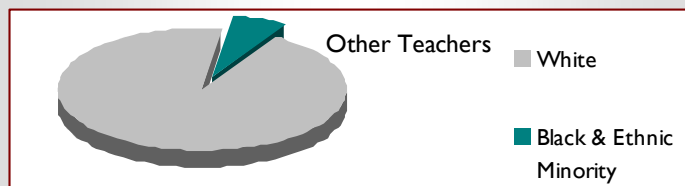
AGE

| Age Group | Heads | Deputy | Asst Head | Other Teachers | SUP | TAS | Total |
|--------------|-----------|-----------|------------|----------------|-------------|------------|-------------|
| 0-20 | 0 | 0 | 0 | 2 | 38 | 3 | 43 |
| 21-25 | 0 | 0 | 1 | 178 | 76 | 51 | 306 |
| 26-30 | 0 | 0 | 5 | 395 | 80 | 32 | 512 |
| 31-35 | 0 | 3 | 31 | 346 | 66 | 48 | 494 |
| 36-40 | 5 | 10 | 35 | 267 | 143 | 65 | 525 |
| 41-45 | 7 | 12 | 31 | 279 | 227 | 117 | 673 |
| 46-50 | 9 | 7 | 30 | 254 | 246 | 125 | 671 |
| 51-55 | 9 | 10 | 23 | 240 | 259 | 126 | 667 |
| 56-60 | 9 | 11 | 18 | 198 | 166 | 78 | 480 |
| 61-65 | 1 | 2 | 0 | 60 | 105 | 23 | 191 |
| 66+ | 0 | 0 | 1 | 7 | 39 | 4 | 51 |
| Total | 40 | 55 | 175 | 2226 | 1445 | 672 | 4613 |

ETHNICITY

| | White | Black & Ethnic Minority | Total |
|----------------|--------------|-------------------------|--------------|
| Heads | 39 | 0 | 39 |
| Deputy | 55 | 0 | 55 |
| Asst Head | 170 | 2 | 172 |
| Other Teachers | 2,063 | 132 | 2,195 |
| SUP | 1,379 | 55 | 1,434 |
| TAS | 628 | 35 | 663 |
| Total | 4,334 | 224 | 4,558 |

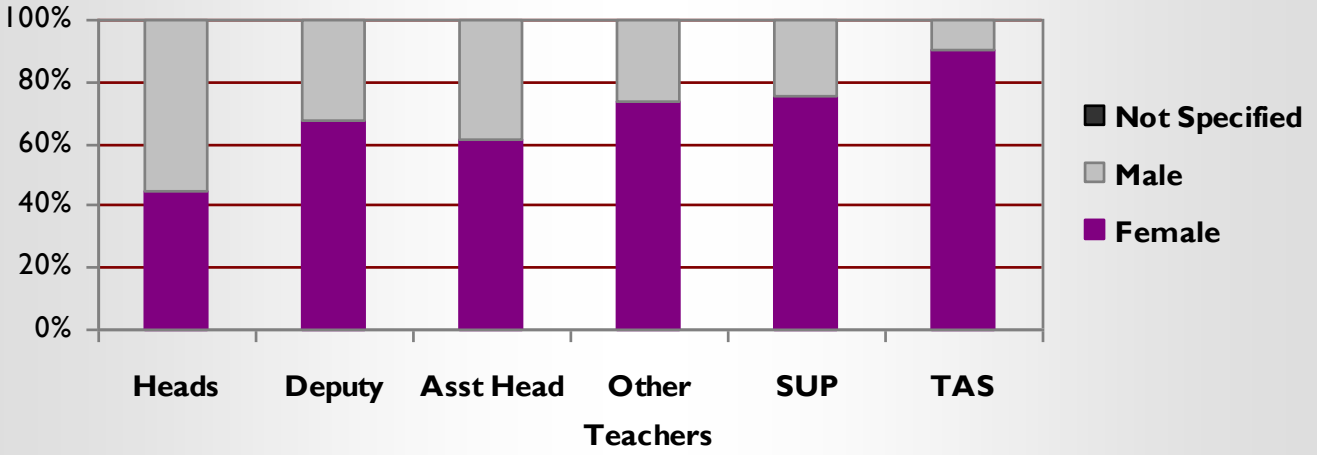
Does not include Refused or Not Obtained



GENDER

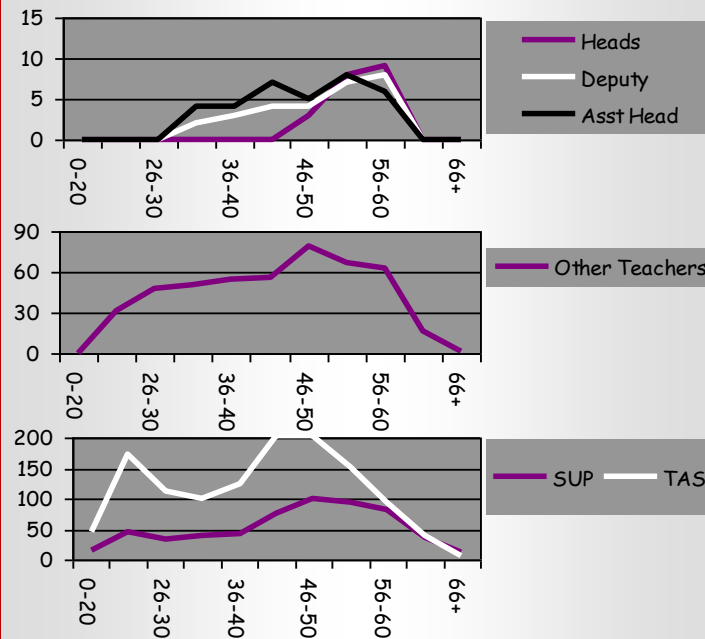
Special

| Gender | Heads | Deputy | Asst Head | Other Teachers | SUP | TAS | Total |
|---------------|-----------|-----------|-----------|----------------|------------|-------------|-------------|
| Female | 9 | 19 | 21 | 345 | 433 | 1127 | 1954 |
| Male | 11 | 9 | 13 | 124 | 143 | 121 | 421 |
| Not Specified | 0 | 0 | 0 | 0 | 0 | 0 | 0 |
| Total | 20 | 28 | 34 | 469 | 576 | 1248 | 2375 |



AGE

| Age Group | Heads | Deputy | Asst Head | Other Teachers | SUP | TAS | Total |
|--------------|-----------|-----------|-----------|----------------|------------|-------------|-------------|
| 0-20 | 0 | 0 | 0 | 0 | 14 | 45 | 59 |
| 21-25 | 0 | 0 | 0 | 31 | 46 | 172 | 249 |
| 26-30 | 0 | 0 | 0 | 48 | 32 | 111 | 191 |
| 31-35 | 0 | 2 | 4 | 51 | 40 | 100 | 197 |
| 36-40 | 0 | 3 | 4 | 55 | 43 | 123 | 228 |
| 41-45 | 0 | 4 | 7 | 56 | 75 | 202 | 344 |
| 46-50 | 3 | 4 | 5 | 79 | 101 | 204 | 396 |
| 51-55 | 8 | 7 | 8 | 67 | 94 | 151 | 335 |
| 56-60 | 9 | 8 | 6 | 63 | 83 | 94 | 263 |
| 61-65 | 0 | 0 | 0 | 17 | 37 | 40 | 94 |
| 66+ | 0 | 0 | 0 | 2 | 11 | 6 | 19 |
| Total | 20 | 28 | 34 | 469 | 576 | 1248 | 2375 |



ETHNICITY

| | White | Black & Ethnic Minority | Total |
|----------------|--------------|-------------------------|--------------|
| Heads | 20 | 0 | 20 |
| Deputy | 28 | 0 | 28 |
| Asst Head | 34 | 0 | 34 |
| Other Teachers | 447 | 9 | 456 |
| SUP | 561 | 9 | 570 |
| TAS | 1,185 | 29 | 1,214 |
| Total | 2,275 | 47 | 2,322 |

Does not include Refused or Not Obtained

