

# School Workforce Census

## Autumn 2017

Based on 352 KCC schools  
as at Nov 2017 Census Date

301 Primary

30 Secondary (inc 7 PRUs)

21 Special

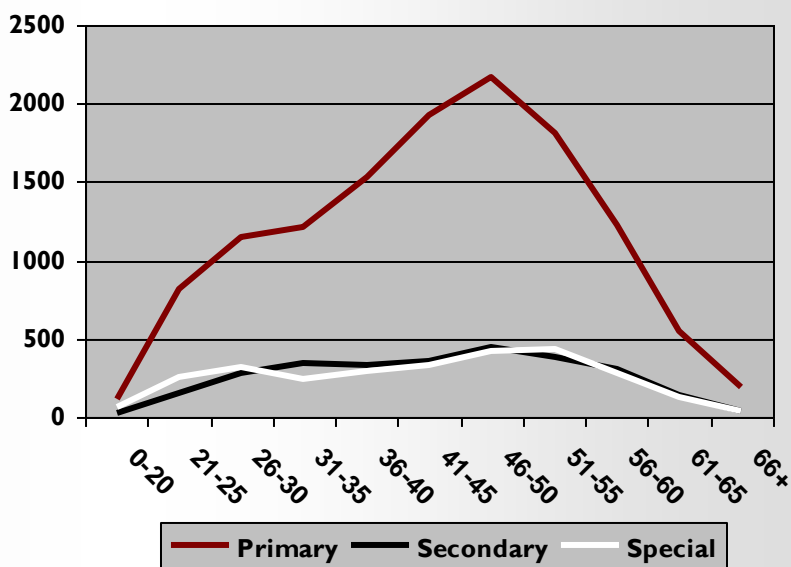
# School Workforce Census Nov 2017 Totals

## Headcount by School Type and Job Group

Job Type	Primary	Secondary	Special	Total
Teaching	4,558	1,571	721	6,850
Non Teaching	8,133	1,244	2,065	11,442
<b>Total</b>	<b>12,691</b>	<b>2,815</b>	<b>2,786</b>	<b>18,292</b>

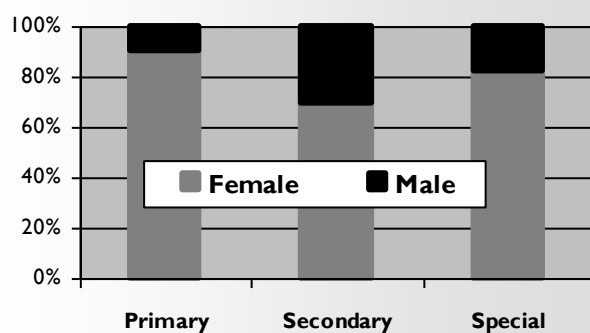
## Headcount by School Type and Age

Age Group	Primary	Secondary	Special	Total
0-20	117	22	61	200
21-25	812	154	249	1,215
26-30	1,144	284	313	1,741
31-35	1,207	350	238	1,795
36-40	1,533	338	294	2,165
41-45	1,922	360	336	2,618
46-50	2,171	445	417	3,033
51-55	1,814	386	430	2,630
56-60	1,230	301	285	1,816
61-65	546	137	126	809
66+	195	38	37	270
<b>Total</b>	<b>12,691</b>	<b>2,815</b>	<b>2,786</b>	<b>18,292</b>



## Headcount by School Type and Gender

Gender	Primary	Secondary	Special	Total
Female	11,441	1,949	2,286	15,676
Male	1,250	866	500	2,616
Not Specified	0	0	0	0
<b>Total</b>	<b>12,691</b>	<b>2,815</b>	<b>2,786</b>	<b>18,292</b>

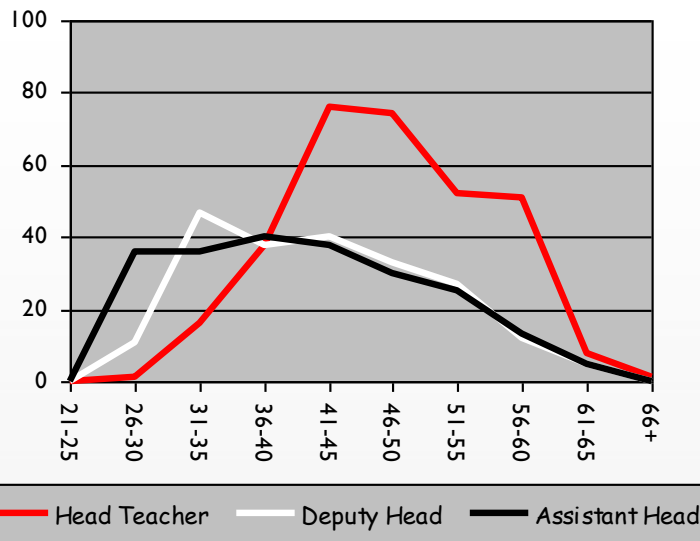


## Sickness Totals for Teachers (Absence for Support Staff is not mandatory)

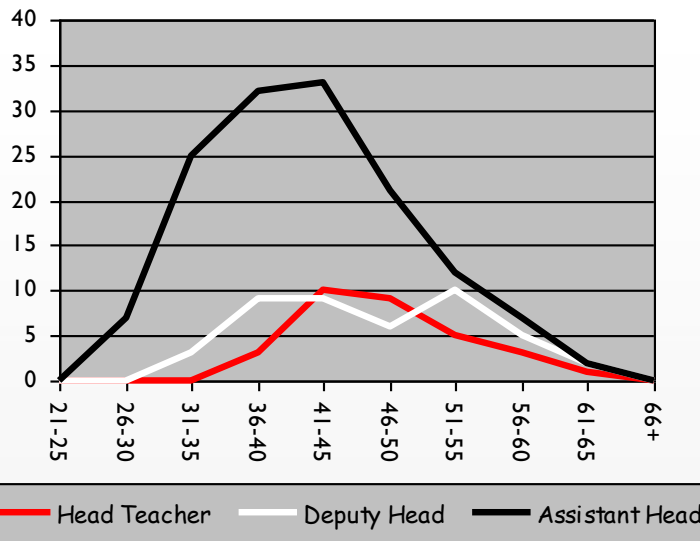
Teaching Staff	
Teachers in service as at 2nd Nov 2017	6,850
Teachers in service at any time during the year	8,309
Teachers in service at any time during the year taking sick leave	4,090
Total Sickness days September 2016 - August 2017	29,344
Days lost per teacher taking sick leave	7.2
Of teachers in service at any time during the year, percentage taking at least one period of sick leave	49.2%

# Age Profile - Leadership by Phase

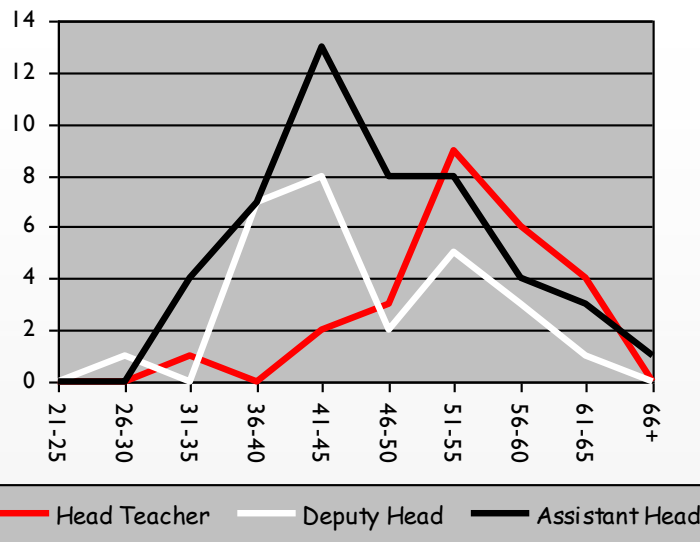
Primary				
Age Group	Head Teacher	Deputy Head	Assistant Head	Total
21-25	0	0	0	0
26-30	1	11	36	48
31-35	16	47	36	99
36-40	38	38	40	116
41-45	76	40	38	154
46-50	74	33	30	137
51-55	52	27	25	104
56-60	51	12	13	76
61-65	8	5	5	18
66+	1	0	0	1
<b>Total</b>	<b>317</b>	<b>213</b>	<b>223</b>	<b>753</b>



Secondary				
Age Group	Head Teacher	Deputy Head	Assistant Head	Total
21-25	0	0	0	0
26-30	0	0	7	7
31-35	0	3	25	28
36-40	3	9	32	44
41-45	10	9	33	52
46-50	9	6	21	36
51-55	5	10	12	27
56-60	3	5	7	15
61-65	1	2	2	5
66+	0	0	0	0
<b>Total</b>	<b>31</b>	<b>44</b>	<b>139</b>	<b>214</b>



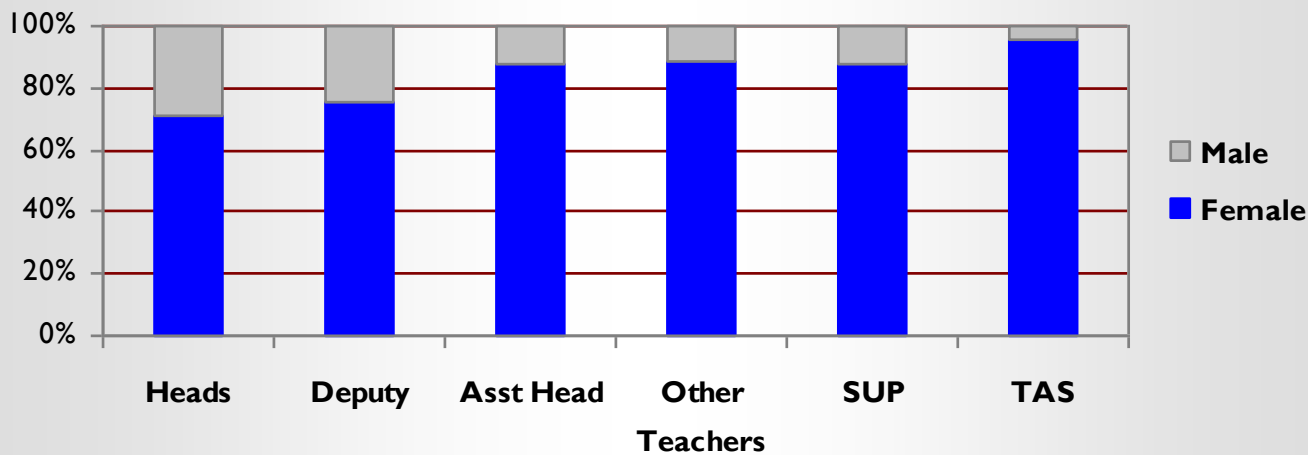
Special				
Age Group	Head Teacher	Deputy Head	Assistant Head	Total
21-25	0	0	0	0
26-30	0	1	0	1
31-35	1	0	4	5
36-40	0	7	7	14
41-45	2	8	13	23
46-50	3	2	8	13
51-55	9	5	8	22
56-60	6	3	4	13
61-65	4	1	3	8
66+	0	0	1	1
<b>Total</b>	<b>25</b>	<b>27</b>	<b>48</b>	<b>100</b>



# GENDER

Primary

Gender	Heads	Deputy	Asst Head	Other Teachers	SUP	TAS	Total
Female	226	160	195	3360	3094	4406	11441
Male	91	53	28	445	441	192	1250
Not Specified	0	0	0	0	0	0	0
<b>Total</b>	<b>317</b>	<b>213</b>	<b>223</b>	<b>3805</b>	<b>3535</b>	<b>4598</b>	<b>12691</b>

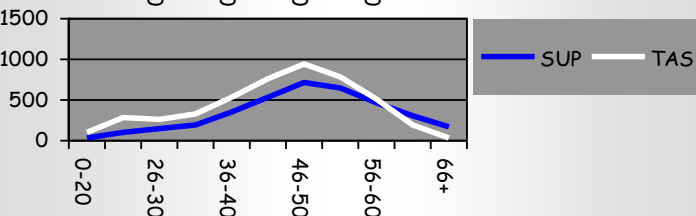
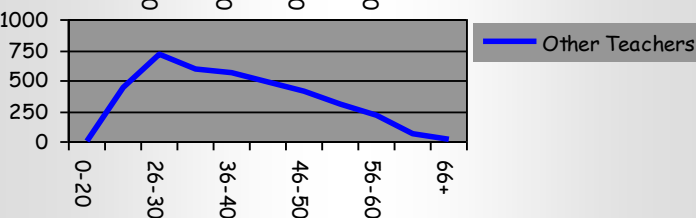
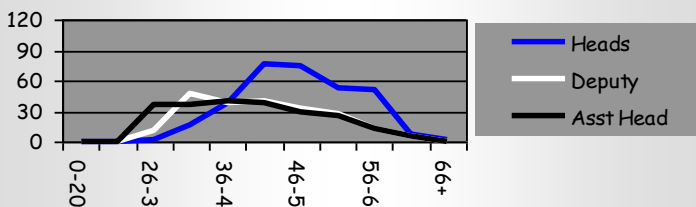
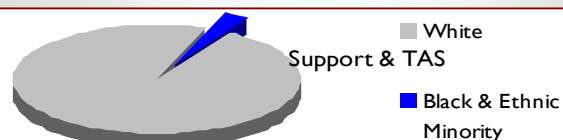
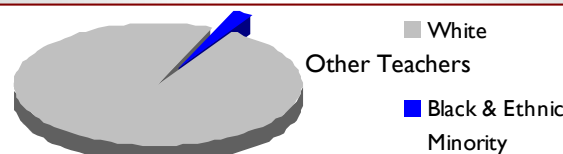
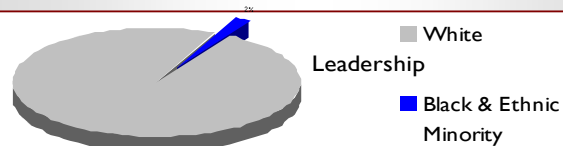


# AGE

Age Group	Heads	Deputy	Asst Head	Other Teachers	SUP	TAS	Total
0-20	0	0	0	0	30	87	117
21-25	0	0	0	445	96	271	812
26-30	1	11	36	711	130	255	1144
31-35	16	47	36	598	192	318	1207
36-40	38	38	40	558	334	525	1533
41-45	76	40	38	492	515	761	1922
46-50	74	33	30	415	697	922	2171
51-55	52	27	25	306	641	763	1814
56-60	51	12	13	205	458	491	1230
61-65	8	5	5	61	287	180	546
66+	1	0	0	14	155	25	195
<b>Total</b>	<b>317</b>	<b>213</b>	<b>223</b>	<b>3805</b>	<b>3535</b>	<b>4598</b>	<b>12691</b>

# ETHNICITY

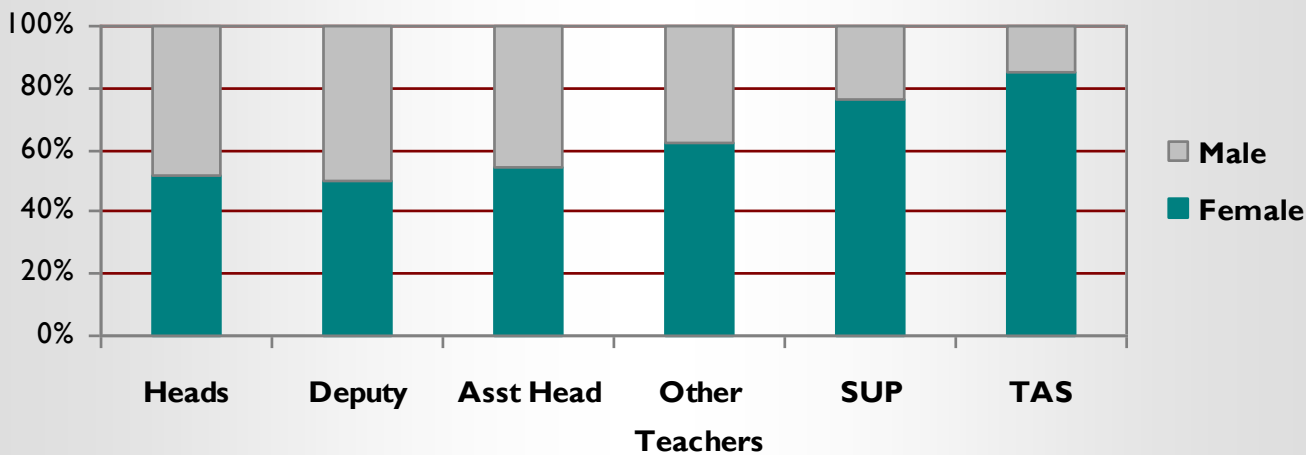
	White	Black & Ethnic Minority	Refused or Not Obtained	Total
Heads	306	6	5	317
Deputy	208	1	4	213
Asst Head	213	6	4	223
Other Teachers	3,646	81	78	3,805
SUP	3,357	100	78	3,535
TAS	4,375	117	106	4,598
<b>Total</b>	<b>12,105</b>	<b>311</b>	<b>275</b>	<b>12,691</b>



# GENDER

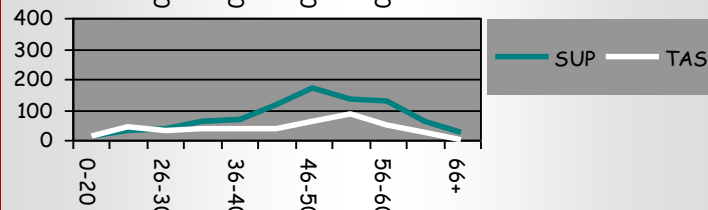
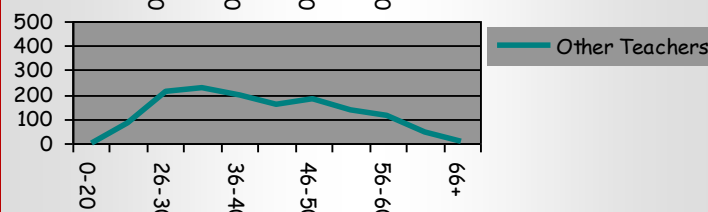
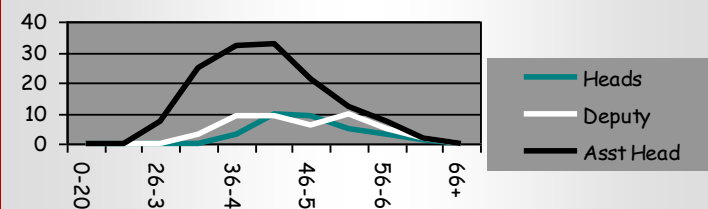
Secondary

Gender	Heads	Deputy	Asst Head	Other Teachers	SUP	TAS	Total
Female	16	22	75	849	639	348	1949
Male	15	22	64	508	194	63	866
Not Specified	0	0	0	0	0	0	0
<b>Total</b>	<b>31</b>	<b>44</b>	<b>139</b>	<b>1357</b>	<b>833</b>	<b>411</b>	<b>2815</b>



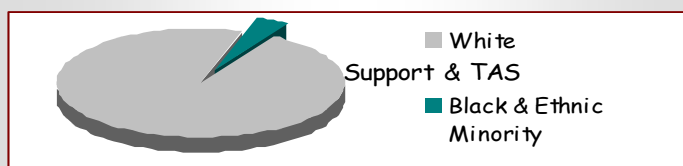
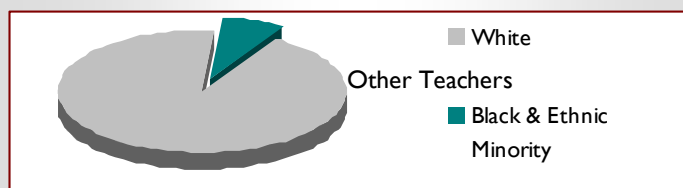
# AGE

Age Group	Heads	Deputy	Asst Head	Other Teachers	SUP	TAS	Total
0-20	0	0	0	0	12	10	22
21-25	0	0	0	82	31	41	154
26-30	0	0	7	209	36	32	284
31-35	0	3	25	226	60	36	350
36-40	3	9	32	194	66	34	338
41-45	10	9	33	156	116	36	360
46-50	9	6	21	181	167	61	445
51-55	5	10	12	138	136	85	386
56-60	3	5	7	113	125	48	301
61-65	1	2	2	47	60	25	137
66+	0	0	0	11	24	3	38
<b>Total</b>	<b>31</b>	<b>44</b>	<b>139</b>	<b>1357</b>	<b>833</b>	<b>411</b>	<b>2815</b>



# ETHNICITY

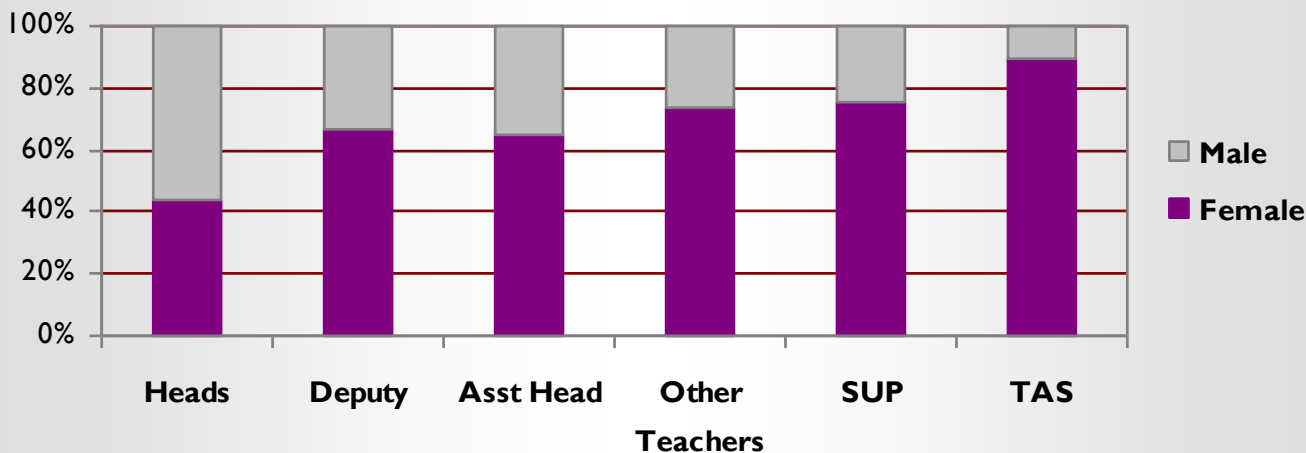
	White	Black & Ethnic Minority	Refused or Not Obtained	Total
Heads	30	1	0	31
Deputy	43	0	1	44
Asst Head	132	5	2	139
Other Teachers	1,236	91	30	1,357
SUP	793	35	5	833
TAS	397	10	4	411
<b>Total</b>	<b>2,631</b>	<b>142</b>	<b>42</b>	<b>2,815</b>



# GENDER

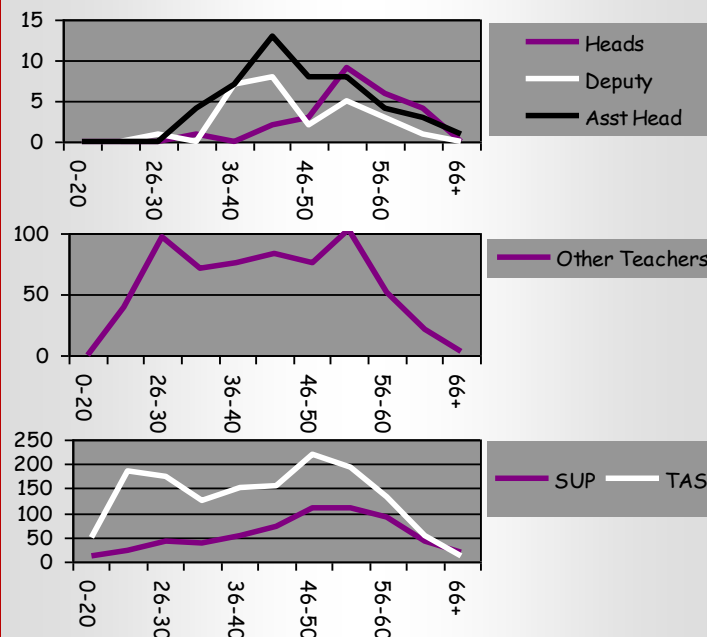
Special

Gender	Heads	Deputy	Asst Head	Other Teachers	SUP	TAS	Total
Female	11	18	31	458	460	1308	2286
Male	14	9	17	163	149	148	500
Not Specified	0	0	0	0	0	0	0
<b>Total</b>	<b>25</b>	<b>27</b>	<b>48</b>	<b>621</b>	<b>609</b>	<b>1456</b>	<b>2786</b>



## AGE

Age Group	Heads	Deputy	Asst Head	Other Teachers	SUP	TAS	Total
0-20	0	0	0	0	12	49	61
21-25	0	0	0	39	23	187	249
26-30	0	1	0	97	40	175	313
31-35	1	0	4	71	38	124	238
36-40	0	7	7	76	52	152	294
41-45	2	8	13	84	72	157	336
46-50	3	2	8	76	109	219	417
51-55	9	5	8	103	110	195	430
56-60	6	3	4	51	90	131	285
61-65	4	1	3	21	43	54	126
66+	0	0	1	3	20	13	37
<b>Total</b>	<b>25</b>	<b>27</b>	<b>48</b>	<b>621</b>	<b>609</b>	<b>1456</b>	<b>2786</b>



## ETHNICITY

	White	Black & Ethnic Minority	Refused or Not Obtained	Total
Heads	25	0	0	25
Deputy	25	1	1	27
Asst Head	47	1	0	48
Other Teachers	590	16	15	621
SUP	588	17	4	609
TAS	1,372	48	36	1,456
<b>Total</b>	<b>2,647</b>	<b>83</b>	<b>56</b>	<b>2,786</b>

