

RISE



Department
for Education

RISE Operations Group Meeting

10th December 2025

16:00 – 17:30

RISE Operations Working Group Meeting

Wednesday 10 December

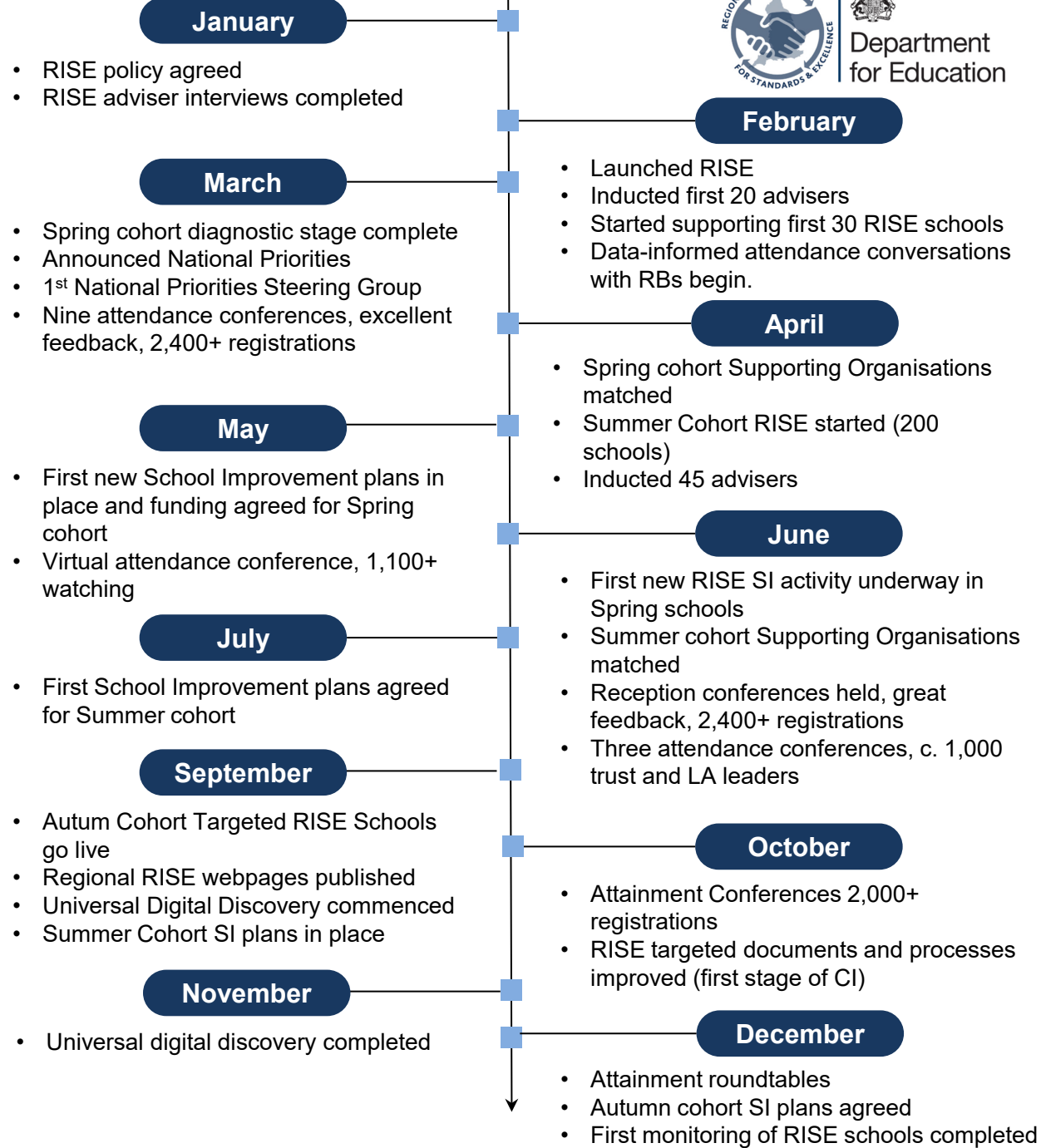
Item	Title and time	Lead	Timing	Purpose
1	Welcome and Introductions	Tim Coulson	16.00 – 16.05	<i>Brief welcome from the Chair; overview of meeting purpose and structure</i>
2	Terms of Reference	Beth Henshaw	16:05 – 16:15	<i>Review and agree on group's purpose, scope, ways of working; confirm membership</i>
3	RISE Policy Overview	Andrew Ford	16:15 – 16:35	<i>An overview of the vision for school improvement</i>
4	Universal RISE delivery	Douglas Leckie	16:35– 16:55	<i>Outline of progress to date with RISE Universal delivery</i>
5	Targeted RISE delivery	Charlotte Taylor	16:55 – 17:15	<i>Overview of the Targeted RISE service model, common themes from intervention to date, continuous improvement, and monitoring</i>
6	AOB	Tim Coulson	17:15 – 17:30	<i>Confirm actions and owners; agree date and focus of next meeting</i>

RISE launched in February 2025 and has delivered key successes and built momentum across the programme since

Key facts & figures

Number of Advisers in post		65	
Total number of RISE schools engaged with nationally		397	
Number of Conferences		31	
Number of Conference registrations		8000+	
RISE planning grants approved	298	RISE SI Grants app.	167

Figures correct as of 05.12.2025





RISE: Universal Overview



Douglas Leckie

Universal RISE is contributing to the Opportunity Mission...

Opportunity Mission

“Break the link between a child’s background and their future success”

RISE national priorities



Attendance



Attainment



Reception Year Quality



Inclusive mainstream



Signposting to support will be made clearer

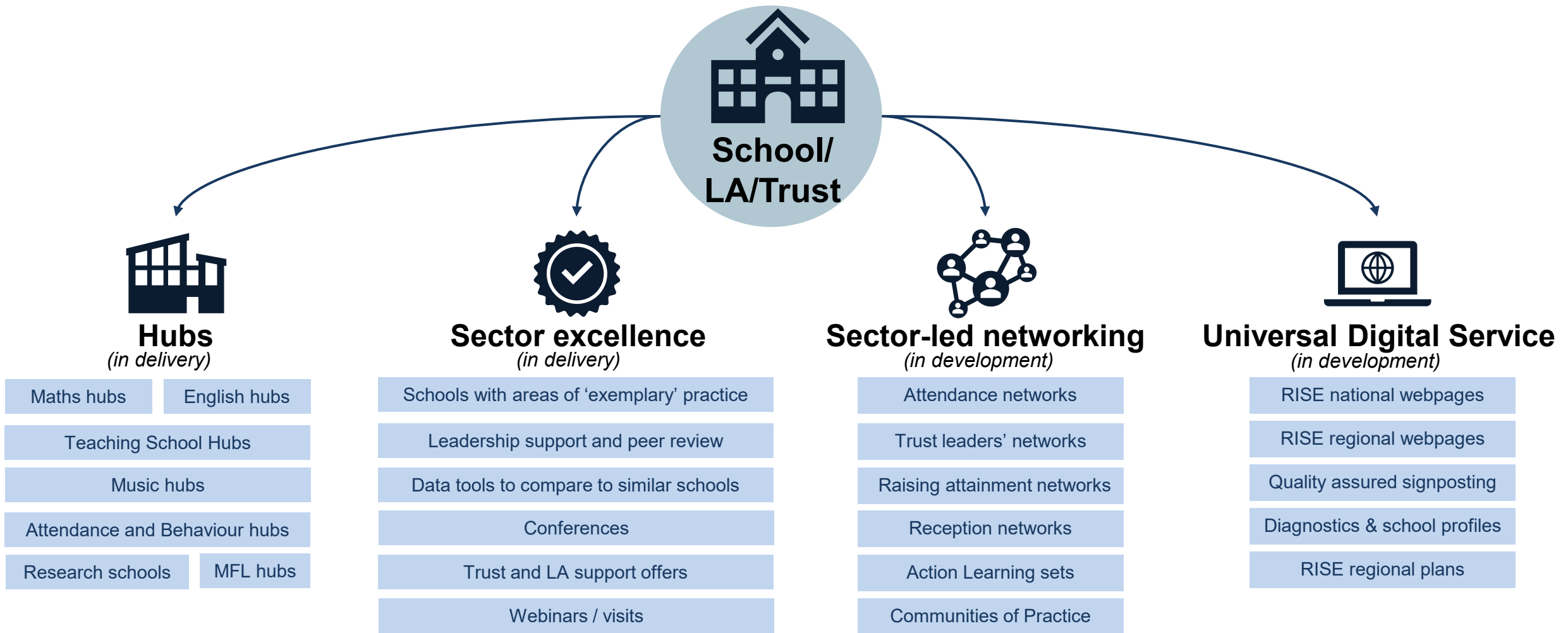
RISE teams will **foster an open culture** of sharing best practice

RISE teams will **convene and empower local partners** to deliver change against priorities, including commissioning capacity

Delivering national priorities through a regional infrastructure

Regional Directors and RISE Teams working with LAs, dioceses, trusts and Combined Authorities to deliver against **improvement priorities**, articulated in **RISE regional plans**.

...by facilitating the development of a self-improving school system.



Regions Group's current National Priorities help us frame all aspects of Universal RISE

Attendance

Attainment

Reception Year Quality

Inclusive mainstream

Universal RISE is delivering an ambitious programme of work...



March 2025

National Priorities announced



March and June 2025

Attendance and reception Conferences



June 2025

Reception Improvement Offer



September 2025

Compare your Good Level of Development data tool



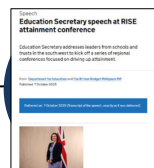
September 2025

Attendance and Behaviour Hubs launched



September 2025

RISE webpages published



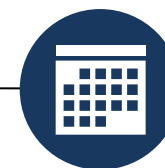
October 2025

Attainment Conferences



Spring 2026

Mainstream Inclusion Conferences



Spring 2026

RISE Regional Plans



Spring 2026

Early Years Foundation Stage Profile assessment guidance and training materials published

...including a flagship series of conferences.



RISE Attendance conferences

- March: **nine regional conferences**, aimed at practitioners (headteachers, senior attendance leads). c. 1,000 attendees.
- May: **national virtual conference**, c. 1,000 attendees.
- June: **three pan-regional conferences** – North, Midlands, London – aimed at senior strategic leaders (MAT CEOs/Chairs, LA Directors of Education). Over 2,000 registrations.
- **Strong positive feedback**, overall rating 4.5/5.
- Attendees highlighted the **banded data approach, practical strategies**, and **networking opportunities**.



RISE Reception conferences

- June/July: **nine regional conferences**, aimed at trust CEOs, school leaders and senior leaders in LAs and dioceses. C. 2,000 attendees.
- **c. 98%** of respondents rating as **Excellent or Good**.
- Attendees highlighted **evidence-based research, practical strategies, networking opportunities**, and **clear, consistent messaging**.



RISE Attainment conferences

- October: **nine regional conferences**, aimed at secondary headteachers, trust CEOs and senior leaders in LAs and dioceses. c. 1,500 in person, c. 2,000 receiving slides and post-event wider information.
- Very positive feedback, with c. **97%** of respondents rating them as **Fair, Good or Excellent**.
- Common themes: appreciation of **latest data insights, case studies, networking opportunities** and **involvement of external partners** such as Public First and Parentkind.



New data insights



Commitment to changing practice



Support for more conferences

How we're communicating about Universal RISE...

1. Ongoing engagement with partners - ongoing

Regional teams continue to engage routinely with trusts, LAs and dioceses through a range of means including newsletters, roundtables, webinars and other networks.

2. RISE Universal regional webpages – September 2025

RISE webpages published September 2025. Regional pages comprise:

1. Introduction to the region from the Regional Director
2. An introduction to the RISE advisers in the region
3. All of the relevant DfE hubs in the region, including contact details
4. RISE sector-led networks in the region (if applicable)

Complemented by a national school improvement support page, and dedicated pages detailing support available for each of the national priorities.

3. RISE Regional Plans – spring 2026 (TBC)

How the RISE national priorities will be delivered in the regions will be communicated further in our RISE regional plans, which will include:

1. The regional context that each region will be delivering RISE through;
2. A high level overview of regional capacity available to support the sector;
3. How the region will support the delivery of national priorities, including targets and milestones;
4. An overview of schools eligible for RISE targeted intervention for the region.

...and how you can get involved and stay up to date.



1. **Sign up for and engage with delivery activity** related to the four national priorities (e.g. conferences). Details of these are being shared directly with schools or Responsible Body via email, and also more widely via regional and national comms (e.g. Regional Director newsletters, Eventbrite etc).



2. Review the **new national RISE webpages** covering national school improvement support, and the support available for each of the national priorities.

[Regional improvement for standards and excellence \(RISE\): school support - GOV.UK](#)



3. Review your **regional RISE webpage**.

[Regional improvement for standards and excellence \(RISE\): school support - GOV.UK](#)



4. If appropriate, **review and update your school improvement plans** in light of the above, and consider new or existing engagement with any of the existing DfE hubs.



5. Keep up to date with **DfE data tools** eg, [View Your Education Data](#) logins.

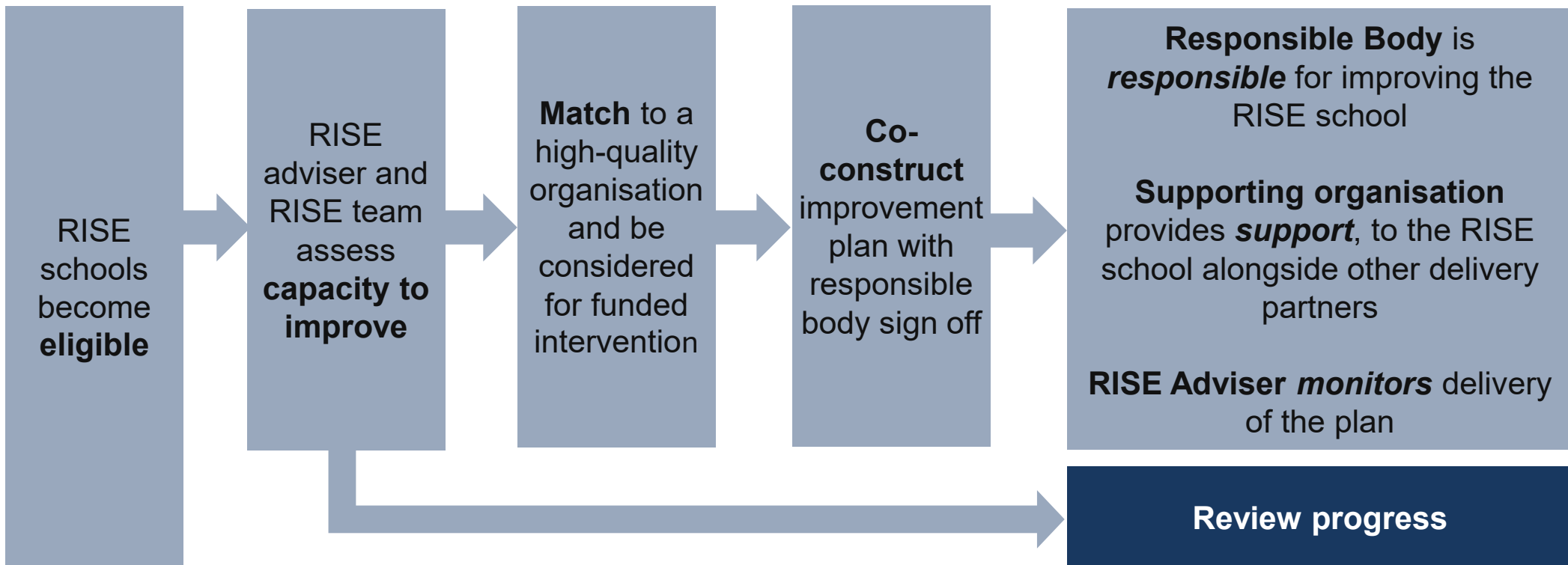
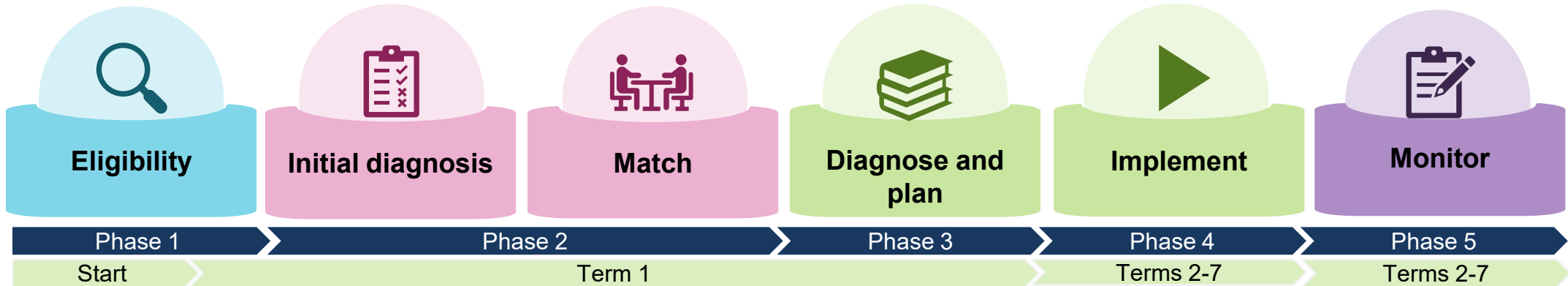


RISE: Targeted Interventions

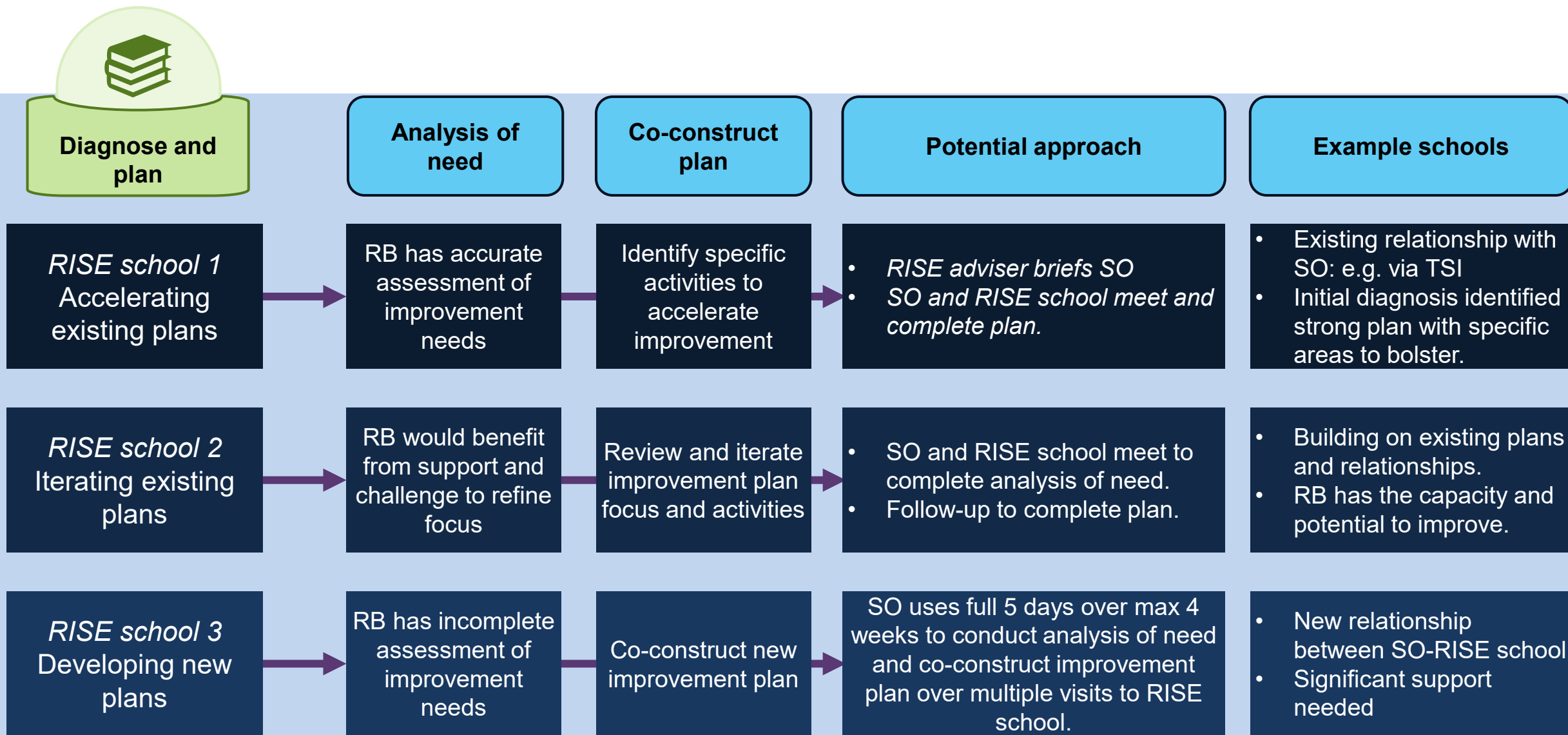


Paul Green

The Targeted RISE service model (1)



The Targeted RISE service model (2)



Common themes from spring and summer cohort's school improvement plans

Quality of Education

Gaps in literacy and phonics provision, inconsistent curriculum sequencing, and underdeveloped assessment systems.

Behaviour and Attitudes

Low-level disruption, inconsistent behaviour policy implementation, and need for trauma-informed approaches

Attendance

Persistent absence above national averages, particularly among disadvantaged pupils.

Leadership and Governance

Limited senior leadership capacity, weak strategic focus, and initiative overload.

Personal Development

Limited enrichment opportunities, underdeveloped careers education, and weak pupil voice and leadership.

Workforce and Resources

Staff morale and retention challenges, with physical environment or resource constraints affecting learning.

We're learning as we go and are implementing improvements for the autumn cohort of schools



Targeted RISE

Stage: In Delivery

- Targeted service now operating at scale: 370 eligible RISE schools (23 spring; 173 summer; 174 autumn).
- 165 spring and summer RISE schools matched to supporting organisations; reviewing progress for 31.
- Continuous improvement to delivery model following first test and learn (spring) and scale-up (summer) cohorts.
- Delivery now multi-phase with 'set-up' (174 autumn schools) and 'implementation' (196 spring and summer school).

Next steps

- Lay regulations to ensure all schools eligible for RISE are in scope of mandation.
- Finalise remaining summer cohort School Improvement plans and match Supporting Organisations to autumn cohort schools.
- Finalise improvements to guidance and SI plans.
- New materials for RISE schools, RBs and Supporting Organisations so all clear on expectations, roles, and compliance requirements.
- Showcase impact with case studies and data.

School improvement is underway, and progress will be monitored termly

Within RISE improvement plans each school has set **improvement objectives** underpinned by a set of activities that set out:

- What **short term changes** will be seen?
- What will have **changed by the end of the programme?**

We will **monitor progress** in delivering these activities and the progress towards the short term and end of programme changes agreed in the plan each term, and we will capture a summary of the progress.

We anticipate that our **termly reviews will enable us to monitor:**

- **Short-term (6–12 months):** Early indicators such as improved engagement, attendance, or teacher confidence.
- **Medium-term (1–2 years):** Changes in teaching practices and school culture.

In the more **immediate term**, we can show:

- Direct feedback from RISE advisers, RISE schools, and supporting organisations.
- Examples of activity from improvement plans already in action.

NOTE: implementation of improvement plans started in September for the vast majority of spring and summer RISE schools.