

What we're doing for children, young people and families 2025–2028

Our aim is to help every child with SEND
live a happy, healthy, and included life.



1.

Improving the lived experience for children and families



We're making it easier for you to get the right information and feel listened to:

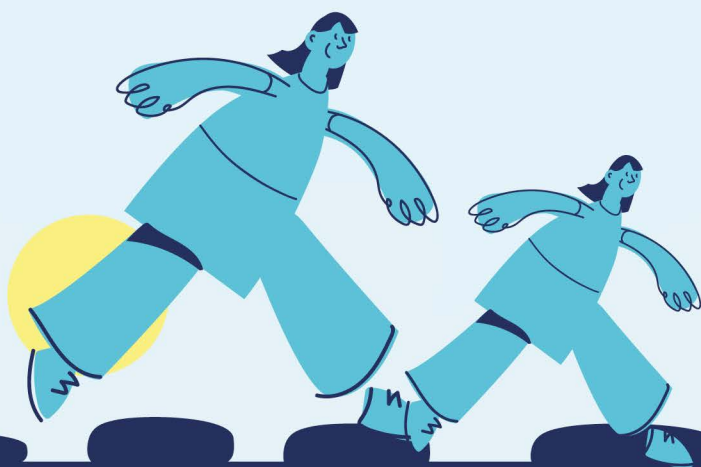
- We're sharing real stories that show how local schools support children with SEND.
- When you tell us something needs to change, we'll show what we've done through "You Said, We Did."
- We're working with schools and health services to make sure children in special schools get better access to health support.
- We're using case studies to learn what works and improve services for other families.

How you'll see the difference:

Better communication, more support in schools, and your voice influencing what happens next.

2.

**Access to the
right support at
the right time in
the right place**



We want it to be easier and faster to get help when you need it:

- We're improving early years support and learning from Reception year pilot projects.
- We're updating special school places across Kent so they meet current needs.
- We're using "Inclusion Dashboards" to make sure support is planned fairly in each area.
- We're increasing our information advice and guidance using different resources and platforms.
- We're working closely with Family Hubs.

How you'll see the difference:

Faster support, clearer processes, and fair access wherever you live.

3.

Achieving the best outcomes through inclusion and participation



We want every child to be supported in their learning, wherever they go to school:

- All Kent schools will be working within communities to share resources and best practice.
- We're piloting a new way to help schools support children who are neurodivergent called the PINS project
- We're sharing videos and case studies that show what good inclusion looks like.

How you'll see the difference:

More schools ready to welcome and support children with SEND, and higher expectations for success.

4.

Working in together with children and young people with SEND and their families



We want to work with you – not just for you:

- We're launching a Co-Production Charter, so parents and young people are part of developing and improving our services.
- You can join forums, surveys and local groups to share your views and help shape services.
- We're using a new framework (called LEEF) to make sure we clearly explain how your voice is used.
- Kent PACT is helping us hold services to account through a formal partnership.

How you'll see the difference:

More ways to get involved and more trust that your feedback leads to action.

5.

Preparing for the Future



We're helping young people get ready for adult life:

- We're expanding Supported Internships so more young people move into jobs.
- We've created clear pathways for moving from primary to secondary, and into post-16 education.
- We're encouraging health checks for young people aged 14+ with a learning disability.
- Young people are helping us create resources about independent living and travel.

How you'll see the difference:

More support for life skills, jobs, and confidence in the future.

Want to get involved?

You can:

- Join a Parent Carer Forum or SEND Youth Council.
- Give feedback via surveys and consultations.
- Read our regular SEND newsletters.
- Use the SEND Local Offer for resources and updates.