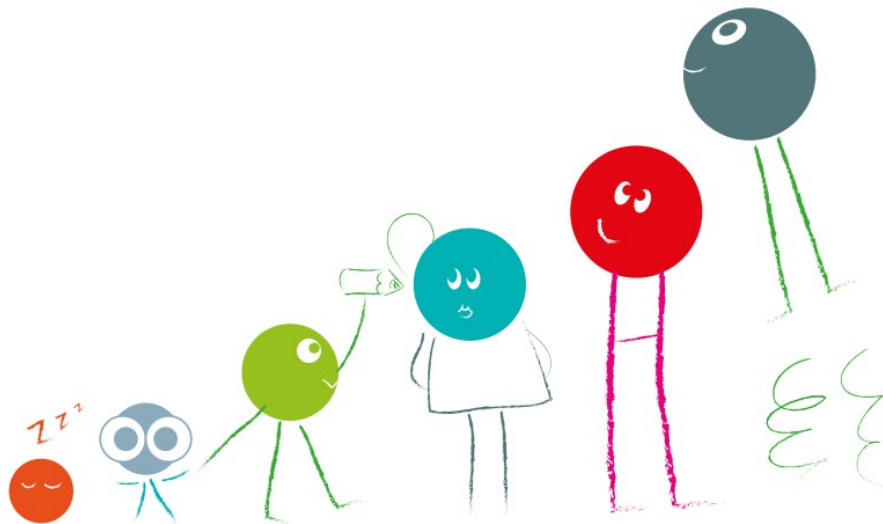




Early Years and Childcare Excellence

Early Years and Childcare Bulletin

February 2017

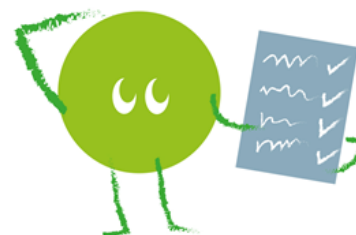


Kent County Council

Early Years and Childcare Service

Contents

Page 2	Welcome and Introduction Alex Gamby
Page 3	News and Updates
Page 7	Threads of Success Training and Services
Page 10	Contact Us



Welcome and Introduction Alex Gamby, Head of Early Years and Childcare

Welcome to 2017. At the start of what promises to be a busy year as we prepare for the introduction of 30 Hours of Free Childcare in September, I would like to share with you two pieces of very good news:

- The percentage of Early Years settings judged by Ofsted to be good or outstanding reached an all time high of 97%, which is excellent
- The percentage of eligible two year olds taking up their free place was also higher than it has ever been, reaching 74% at the end of Term Two, which is very good.

Thank you and very well done for your contribution towards these successes and the difference that you continue to make in the lives of children and families in Kent.

30 Hours of Free Childcare represents a significant challenge for us in Kent, as indeed it does nationally. You will be aware that, as this is a fast moving agenda over a relatively short period of time, we are bringing you monthly updates throughout that period to ensure a steady and timely flow of information. Please find a link to the most recent 30 Hours Update [here](#).

During March we will be holding twelve district based 30 Hours of Free Childcare Seminars, and information about these is available on page 9 of this Bulletin. We recognise that it can be difficult to be away from your setting but please make every effort to attend the event for your district as we work together to deliver this government policy commitment in Kent. I will be attending each one of these seminars and look forward to seeing as many of you as possible.

Thank you very much.

News and Updates

Registration with the Information Commissioners Office (ICO)

We have recently become aware that a number of settings are not registered with the Information Commissioners Office (ICO) because the online application form has told them there is no need. Having checked with the ICO you must comply with the Data Protection Act 1998 by registering with them if you take photographs of children in the setting.

Additionally, if you deliver Free Early Education for 2, 3 and 4 year olds then you must be registered under the terms of the Kent Provider Agreement. Registration costs just £35 per year and is a small price to pay to ensure you are compliant. You can set up a direct debit so you do not have to remember to re-apply each year.

You can complete your registration [here](#).

Are you ready for Tax-Free Childcare?

Childcare providers across the country are signing up for the government's new offer: Tax-Free Childcare.

Tax-Free Childcare will help working parents with the cost of childcare, offering up to £2,000 per child per year, or £4,000 if a child is disabled. Parents will be able to open an online account, which they can use to pay for childcare from a registered provider. For every £8 parents pay into these accounts, the government will add £2. Childcare providers must sign up to be able to receive payments from parents through the scheme.

To sign up, childcare providers should visit www.childcare.tax.service.gov.uk and will need:

- The unique code included in their invitation letter
- The bank account details for the account they wish to receive payments into.
- Their Unique Taxpayer Reference (UTR) number – or their National Insurance number, if they don't have a UTR.

Tax-Free Childcare will be rolled out to parents from early 2017 but it is important that you as a provider sign up as soon as possible to be ready for the scheme's launch. You can find more information on the scheme by visiting the [Top things providers need to know on Gov.uk](#).

Committee News

The Charity Commission has produced guidance on when they can issue an official warning to charities that have been in breach of trust or duty or other mismanagements. This is in addition to their existing powers on dealing with wrongdoings in charities. If you want to learn more about official warnings and when the commission may use them please follow this [link](#).

Alternatively you can contact your Childcare Sufficiency Officer at SufficiencyandSustainability@kent.gov.uk

Forthcoming Committee Matters Training

The Childcare Sufficiency Team is planning to deliver Committee Matters training late February/March 2017 and is asking anyone who may wish to attend to please register their interest at

ThreadsofSuccess@kent.gov.uk

Free for Two (FF2) Delivery Team

The continuing claim form for the Spring Term was sent on 12 December 2016 and can be completed and submitted now for children who were in settings last term and returned in January 2017. The new starter, adjustment and parental declaration forms have also been sent. All of these forms have a new box for providers to indicate the ethnicity of the child. This information is being collected for the Early Years Census in accordance with a Department for Education directive.

There has been an increase in the number of applications received where the date of birth for the child is incorrect. Please may we remind you of the importance of checking the child's birth certificate or passport to ensure that it is within the eligible date of birth range. We are unable to fund children who are not in the correct date of birth range and, if it transpires that a claim has been paid for a child who is too young, the funding would be reclaimed.

The FF2 team is always happy to help with any FF2 issues. If you have any queries, please do get in touch at eyfreefor2@kent.gov.uk.

Management Information Early Years Contact Details

Please be reminded that if you have any changes to your setting contacts for Early Years you must email eyfe@kent.gov.uk as soon as possible so we can update the information and ensure that funding is paid on time.

Early Years Pupil Premium (EYPP)

Thank you so much for the time and effort you are putting into applying for EYPP. The take-up for the funding has increased significantly which is excellent news.

There is further advice available on KELSI, with a specific page designed to share information on the EYPP. If you are still unclear about the process please contact the Equality and Inclusion Advisers for help and advice through EYinclusion@kent.gov.uk.

Please could you also use the email address to share how you have used the additional funding and the impact it has had on outcomes for the children.

Early Years Local Inclusion Forum Team (EY LIFT)/Severe and Complex Accessibility Resource Funding (SCARF)

Please ensure that when making a referral for either of these, that you use the paperwork that is on KELSI as this is where the most up to date forms are posted.

All SCARF and EY LIFT dates are on KELSI.



Early Support

Early Support was introduced by central government to achieve better coordinated, family focused services for young disabled children aged 0-5 and their families across England between 2002 and 2015.

All local authorities were expected to fully implement Early Support.

Early Support is no longer funded by the DfE as many of the principles are reflected in Section 19 of the Children and Families Act 2014. The expectation is that local authorities must continue to consider how they implement the Early Support principles that emphasise the importance of person-centred outcomes and the active participation of children, young people and parent carers. This is also reflected in the SEN Code of Practice 2015.

There have been some changes in the referral and administrative processes of Early Support.

From January 2017 if Early Years settings feel that Early Support would be beneficial for a family, it is their responsibility to contact the child's Health Visitor who will then contact the family to discuss the referral. Please do feel able to also discuss the appropriateness of a referral to Early Support at your EY LIFT meeting.



Ofsted Updates

Partnerships with Schools in Out of School settings

With an increasing number of Out of School settings receiving actions or recommendations around partnerships with schools to complement children's learning, Out of School settings, although not required to meet the learning and development requirements, should be complementing children's learning in school through a range of play opportunities in the setting. They should have regard for:

- How they discuss with parents and/or carers (and other practitioners or providers as appropriate, including school staff or teachers) the support that they intend to offer (Early Years Foundation Stage 3.40)
- What partnerships are in place with the school e.g. Family Liaison Officer, SENCo, teachers, Head Teachers etc.
- What evidence there is of the partnerships
- What children are learning in school and how this information is shared
- How good transitions are for children during arrivals and departures (including for children who arrive later in the session)
- What information sharing takes place during transitions.

Consideration should be given to how the setting can best demonstrate these during an inspection.

For further support on reviewing your current practice, the Threads of Success offer for [Out of Schools](#) includes: 'Effective Relationships and Partnerships in Out of School Settings'. Settings can also have this as a focus for a Strategic Improvement Visit.

The most popular recommendation from Ofsted across the county continues to be around the provision of mark-making opportunities. For ideas and inspiration on how to address this area, book a [‘Let’s Look at Literacy’ workshop](#) or a Setting Improvement Visit.

There has also been an increasing number of recommendations around ICT. For information and ideas please visit the [National Literacy Trust](#).

Ofsted Annual Report 2015/16: Education, Early Years and Skills

Published: 1 December 2016

This report comments and reports on evidence and findings on Early Years, schools and further education and skills inspections this past year. Sir Michael Wilshaw, Chief Inspector, is committed to supporting improvement and raising standards for children and learners at the different stages of their education.

The report states that the quality of Early Years provision continues to rise. However, despite this, many children still enter Early Years provision with development weaker than their peers.

The most common areas identified where children’s development is behind are:

- communication, language and listening skills
- personal development
- behaviour.

To gain a better understanding of how the Early Years contributes to a good foundation for behaviour and attitudes to learning in later school life, Inspectors will be asked to collect more evidence about behaviour, including listening skills, preparedness for learning and relationships in Early Years during inspection.

The full report can be found [here](#).



Early Years Collaborations

If you are still in doubt about the benefits of joining a collaboration watch Lisa Evans, Leader of Shepway Rural Collaboration on [KELSI](#).

Book Start Annual Report

The 2015/16 Annual Bookstart Report is now available [here](#).

Parents with Parkinson’s

To find out how we can support children and young people whose parents have Parkinson’s and possibly other life limiting illnesses please follow this [link](#).

Emporium Plus Scrap Store

The development of the scrap store is being postponed as we are focussing on ensuring we continue to offer the highest quality service while meeting the increasing demand for the service, with the resources we currently have.

Kent Children and Families Information Service can help providers

Do you offer any of the following?

Before and/or after school care
Holiday club
Breakfast club

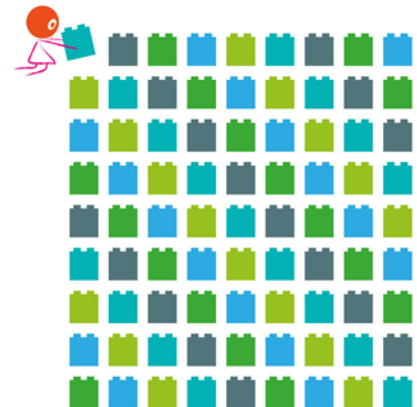
Are you advertising these services with the Kent Children and Families Information Service, allowing parents to find your after school care facility? Are the details of your nursery or preschool up to date?

The information is made available via our telephone number 03000 412323 which is available Monday to Friday 9am-5pm and through our [website](#)

If you are not sure please contact the Kent CFIS on 03000 412323 or email us at kentcfis@kent.gov.uk

If you are holding a special event we can advertise this on our Facebook page www.facebook.com/kcccfis

We support all childcare providers no matter what the enquiry and are happy to offer advice, information and assistance whenever needed.



Training and Services from Threads of Success

Supporting Babies and Under Twos

In response to the outcomes from an action research project with full day care providers, which identified the workforce requirements for managers, leaders and practitioners, we have developed a suite of training packages to support the delivery of high quality care and learning for babies and under twos.

More information on the workshops supporting babies and under twos can be found on our [website](#) Individual places are now available to book for the **Skilful Communicators** course.

'A well-established Key Person system helps children form secure attachments and promotes their well-being and independence. Relationships between staff and babies are sensitive, stimulating and responsive', Ofsted Early Years Inspection Handbook (2015).

Mud, Mud Glorious Mud...



This hands-on workshop will take place outside and as the name suggests this will get messy! You will need to dress appropriately. The workshop will explore the benefits of mud play, including mud kitchens, on children's learning and development. During the session you will discover the potential of mud and identify how it supports the characteristics of effective learning as well as securing your own skills in mud play.

As a result of attending the mud workshop practitioners from Bossingham Pre-School stated that they intend to role model and further extend the learning for the children and staff, as well as getting muddier!

I CAN

Congratulations to I CAN who won the Children and Young People Now 'Early Intervention' Award 2016 for their Early Talk Boost Intervention.



Training for this intervention is available from the Early Years and Childcare Equality and Inclusion Advisers who are licensed to deliver a range of courses designed by I CAN. This intervention is an excellent use of Early Years Pupil Premium (EYPP) as it will enable you to show impact through improved outcomes.

It requires specific resources at an additional cost. For further details and to book the course for your setting or collaboration visit our [website](#).

Or book an individual place through CPD online on the next centralised course on 23rd February 2017 at The Holiday Inn Ashford North.

An Evening With... evaluations from these events are indicating that practitioners and multiagency colleagues are appreciating the opportunity to expand their knowledge and share good practice. [Courses are available in February and March.](#)

Out of School Conference – 10 June 2017 at Oakwood House, Maidstone

Kent County Council will be hosting a conference dedicated to Out of School providers (registered and non-registered) with inspirational keynote speakers to include Ben Kingston-Hughes - Play Consultant and Manager for Inspired Children and Chris Cook – Olympic Swimmer.

Practitioners will also have an opportunity to take part in two interactive workshops and visit a range of market stalls offering advice, support and information to delegates.

Further details will follow in the next bulletin. This will be accessible to book via CPD online in February 2017.

For further information on any of our featured training or any other training and products please visit: www.threadsofsuccess.co.uk or contact the Threads Coordinator at: threadsofsuccess@kent.gov.uk or on 03000 422376.

Briefing and Networking Sessions

As you may be aware, the Briefing and Networking Sessions planned for February have been cancelled to allow the district based 30 Hours of Free Childcare Seminars to take place.

The agenda for the 30 Hours of Free Childcare Seminars will include:

- Update on the national context
- Update on 30 Hours in Kent
- Focus on relevant district
- Getting ready for 30 Hours

To book your place on your local district seminar please click on course code links in table below:

Wednesday 1 March	Tunbridge Wells	EYC 17/087
Friday 3 March	Gravesend	EYC 17/088
Thursday 9 March	Maidstone	EYC 17/089
Friday 10 March	Thanet	EYC 17/090
Tuesday 14 March	Canterbury	EYC17/091
Friday 17 March	Tonbridge & Malling	EYC 17/093
Monday 20 March	Dartford	EYC 17/092
Tuesday 21 March	Sevenoaks	EYC 17/094
Wednesday 22 March	Shepway	EYC 17/095
Friday 24 March	Swale	EYC 17/096
Monday 27 March	Ashford	EYC 17/097
Tuesday 28 March	Dover	EYC 17/098

In addition to the seminars above, there will be 4 area based 30 Hours Seminars for childminders and the dates and venues for these will be published by Prospects.

In answer to two of the questions we have already had about these seminars:

Can more than one person from each setting attend?

Unfortunately no. We have around 700 PVI Early Years providers, over sixty 'stand alone' Out of School providers (who are potentially eligible to be a partner in offering 30 Hours), 69 maintained nurseries and over 600 childminders who deliver free Early Education. We are having to limit places to one representative from each setting, as to allow every setting to have two places would just not be manageable. Settings requesting two places will be allocated one and have the second place requested put on a reserve list, to be allocated closer to the seminar date where capacity permits. (Who actually attends is at the discretion of each setting).

Can I attend a seminar in a different district to the one in which my setting is based?

The information presented at each seminar will include that which is bespoke to the district in question. The key reason therefore for, as far as is possible, attending your relevant district seminar particularly, is to be able to look at the district picture with other providers also in that district. We would ask you therefore to please, as far as possible, book onto the seminar in your own district. If this is completely impossible then please book for an alternative date.

Contact Us

Threads of Success	www.ThreadsofSuccess.co.uk ThreadsofSuccess@kent.gov.uk
Sufficiency and Sustainability	Sufficiencyandsustainability@kent.gov.uk
Free for 2 (FF2) Team	Eyfreefor2@kent.gov.uk
Improvement and Standards	EYCImprovementServices@kent.gov.uk
Equality and Inclusion	EYInclusion@kent.gov.uk
Collaborations	EYCollaborations@kent.gov.uk
Emporium Plus	Emporiumplus@kent.gov.uk
Workforce Development	Earlyyearsworkforce.ask@kent.gov.uk
Kent Children and Families Information Service	Kentcfis@kent.gov.uk
Management Information	eyfe@kent.gov.uk
KELSI	http://www.kelsi.org.uk
Schools e-bulletin	http://www.kelsi.org.uk/ working_in_education/news.aspx

The Early Years and Childcare Bulletin is compiled and edited by Kent County Council's Early Years and Childcare Service. The next issue will be published in term 4.