



# Safeguarding Newsletter

ISSUE NO. 65 April 2018

**THE EDUCATION  
PEOPLE**

**THE SAFEGUARDING NEWSLETTER IS PUBLISHED BY THE EDUCATION SAFEGUARDING TEAM AND ISSUED TO SCHOOLS, EARLY YEARS PROVIDERS AND LOCAL AUTHORITY STAFF THREE TIMES EACH ACADEMIC YEAR**

**In order for this newsletter to continue to be effective, please ensure that it is shared with staff, including all Designated Safeguarding Leads.**

## INCLUDED IN THIS ISSUE

- Team update
- The Front Door
- The Education People
- CSE Intelligence Form
- Safeguarding Conference
- Online Safety
- Policy and Guidance updates
- The GDPR
- e-Learning
- Supervision
- Mental Health Support
- Team Contacts

## Welcome and Team Update

Welcome to the Spring edition of the Safeguarding Newsletter. As you may be aware, there will be several changes over the coming months to statutory safeguarding guidance, notably Keeping Children Safe in Education and Working Together to Safeguard Children. As neither of these documents have been finalised in time for this edition, we would urge you to stay alert to any e-mail updates we will send you before the next edition of the newsletter.

There will also be changes within the Education Safeguarding Team as Robyn Windibank (West Kent Safeguarding Adviser) and Mike O'Connell (Training and Development) will be leaving us towards the end of the summer term. Mike is taking well-earned retirement after many years of service to KCC and to the Education Safeguarding Team, while Robyn is returning to her native United States. I am sure that you will join us in wishing them both all the very best in their new ventures. The recruitment process is well underway and two new advisors will be joining the team for the start of the next academic year. Watch this space for further information.

We would also like to remind you that following the birth of a baby boy, Ashley Assiter, the team's e-Safety Development Officer, is on maternity leave until January 2019. I am sure you will join us in wishing Ashley and her family the very best of luck with the new arrival!

## The Front Door (Referrals to Early Help and Specialist Children's Services)

The new Front Door is getting closer to going live, but not quite ready yet. The Education Safeguarding Team will update you once more information is available and provide links to related resources to assist you in being able to use this new service effectively

## The Education People

As many of you are aware, we are in the process of transferring to a new company, set up by Kent County Council called The Education People with the go live date now deferred until September 2018.

Click on the image to be taken to The Education People website →



As part of the development of The Education People the Kent online safety blog is moving to a new home. You can still expect the same quality of information and content to be posted, just in a different location! Please click on the image below and save the bookmark.



Email subscribers to the blog will be contacted during May 2018 to enable followers to confirm that they wish to continue to receive email alerts.

## CSE Intelligence Form

The new electronic CSE partner information sharing form (eINTEL) has been created so that multi-agency staff can share any information about Child Sexual Exploitation that may be important and relevant for the Multi-Agency Child Sexual Exploitation Team (CSET) in order to build intelligence about CSE and better target the response to prevent and disrupt it.

It must be emphasised that this form is **NOT** a referral in to Specialist Children's Services or to Early Help. If you have concerns that meet the Threshold for to Specialist Children's Services or Early Help, the appropriate referral/notification should be made.



The eINTEL form can be found within KELSI pages. Alternatively, click on the image and save the link. Further information on CSE and guidance on completing the electronic form can be found on the KSCB website

## Snow affects Safeguarding Conference

We were hoping to give you a summary of the most recent conference, but the “Beast from the East” meant we had to postpone the event.

The conference has been rearranged for the 10<sup>th</sup> May; with the third and final conference of the 17/18 academic year to be held on the 19<sup>th</sup> June.

There are a few spaces left on both days so please click on the links below to book...



Conference for Designated Safeguarding Leads  
10<sup>th</sup> May

The Mercure Great Danes Hotel Hollingbourne

Conference for Designated Safeguarding Leads  
19<sup>th</sup> June

The Mercure Hotel Brands Hatch

## Online Safety

The screenshot shows the Kelsi website interface. At the top, there are navigation tabs for 'Early Years & Childcare', 'Primary', 'Secondary', '14 to 25', and 'Early Help & Prevention'. Below these is a search bar with the text 'Search kelsi...' and a magnifying glass icon. The main content area features a blue header with the text 'e-Safety classroom materials'. Below this header, there is a paragraph of text: 'Technology is a fantastic tool for teaching and learning and is an essential part of everyday life; children and young people must be supported to develop strategies to manage and respond to online risk so they can be empowered to build resilience. Whilst the Computing curriculum will no doubt form an essential part of online safety education, safe and responsible use of technologies must be embedded throughout the curriculum to ensure that all children develop the required range of digital literacy skills.'

Have you looked at the e-safety classroom material's page on Kelsi recently? There is lots of new and updated content alongside links to useful information that can be shared with staff and parents/carers.

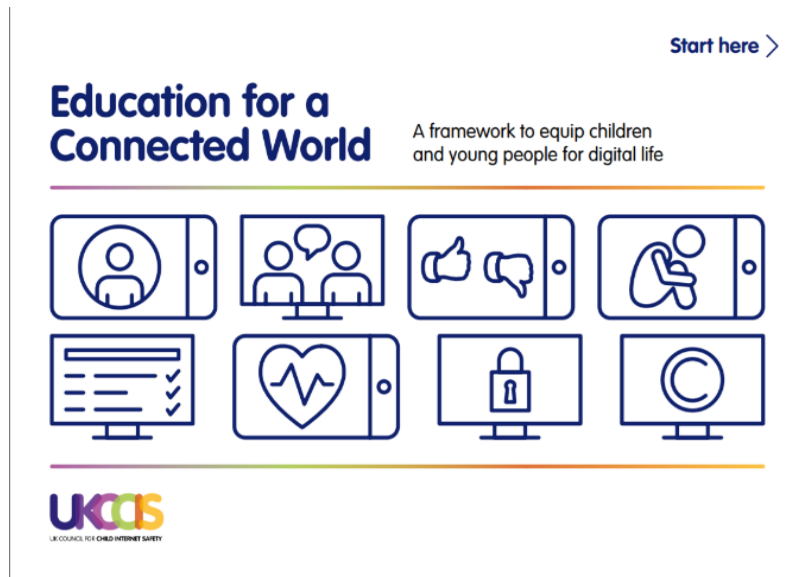
The Education Safeguarding Team receive numerous enquiries from settings when they become aware of information shared between parents warning about specific social media applications (apps). Whilst we appreciate that information is often shared to raise awareness, they can contain inaccurate or out-of-date information, inadvertently reduce credibility, generate unnecessary panic and increase children's curiosity about sites and apps they had not previously heard about.

If DSLs decide to name specific apps or games with parents/carers following an incident, please ensure the content shared is from a reliable source and contains factual and appropriate information. Personal judgements and opinions are not encouraged. Take a look at the online safety pages on KELSIS specifically the [online safety alerts](#) and [engaging parents in children's use of apps](#) guidance, or contact the team for specific guidance and resources.

## Education for a Connected World: A framework to equip children and young people for digital life'

As part of the celebrations for Safer Internet Day 2018 the UK Council for Child Internet Safety published a new online safety guide for those working with children, including early years settings, schools and colleges, to help prepare children and young people for 'digital' life.

The guidance provides eight different aspects of online education: Self-image and identity; relationships; reputation; bullying; managing information; health, wellbeing and lifestyle; privacy and security, and Copyright and ownership.



### Reporting youth produced sexual imagery shared online

When dealing with concerns relating to youth produced sexual imagery or 'sexting', DSLs should follow the UKCCIS and KSCB guidance, which can be accessed on KELSI. There are also services provided by ChildLine and the Internet Watch Foundation (IWF) which aim to help remove images being circulated online.

<https://contentreporting.childline.org.uk>

<https://www.nspcc.org.uk/preventing-abuse/keeping-children-safe/sexting>

### Helping schools safeguard pupils from online grooming

The Kent Police Online Investigation Team (POLIT) respond to incidents of online sexual offending against children, including grooming and incidents where a child feels threatened or pressured. They respond to intelligence from the UK and overseas relating to child sexual abuse and the possession and distribution of indecent images of children. They also investigate reports and information, identifying current and historic victims and suspects both in the UK and worldwide, so enforcement action can be taken, and child safeguarding measures can be put in place.

If you require advice about an online grooming concern or believe that a crime has been committed or a child may be at risk of online abuse, you can seek advice from the POLIT team via 101. If you have a concern regarding CSE which may include online abuse, you can ask any CSE information sharing documents (such as the CSE eINTEL form) to be sent to POLIT for further investigation.

If you have an immediate safeguarding concern, DSLs should follow the existing child protection procedures, or call 999.

## New research published about 'Digital Friendships'



New research into Digital Friendships commissioned by the UK Safer Internet Centre was published as part of the Safer Internet Day 2018 celebrations. The study, which surveyed 2,000 8 to 17-year olds on their feelings and attitudes towards social media,

revealed that despite the often-publicised negative effects of social media use, the internet plays a pivotal and positive role in how young people develop relationships and maintain their social lives in 2018. Click either image to be taken to the report.



## Childnet 'Connect with respect' Film Competition



Childnet have launched their ninth film competition to encourage young people aged 7-18 to create a short film to educate their peers about staying safe online. This year's theme focuses on how young people can 'connect with respect' and work together to make a better place for children and young people.

Competition opens: 21<sup>st</sup> February

Finalists notified 18<sup>th</sup> June.

Competition closes: 11<sup>th</sup> June

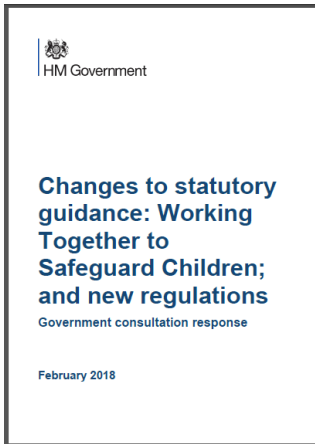
Screening and finalist's event at the BFI 3<sup>rd</sup> July

## Single Point of Access (SPA): Mental health support for young people

The screenshot shows the website for Kent Children and Young People's Mental Health Service (CYPMHS). The header includes the NELFT NHS 70 YEARS OF THE NHS 1948-2018 logo and the NHS Foundation Trust name. The navigation menu includes Home, About us, Our services, Patients, carers and visitors, News and events, Contact us, and Work for us. The main content area is titled 'All about Kent Children and Young People's Mental Health Service' and includes a sub-header 'Information for young people, parents and carers'. There are three images showing young people and a family. A sidebar on the left lists 'Our services' and 'What is CYPMHS'. A right sidebar contains a 'Referral form and service leaflet' section with links to 'Kent CYPMHS referral form [docx] 77KB' and 'Kent CYPMHS leaflet [pdf] 392KB', and a 'Kent and Medway stakeholder briefing' link. Social media icons for Facebook, Twitter, LinkedIn, and WhatsApp are visible on the right.

Kent's Children and Young People's Mental Health Service (CYPMHS) provides emotional wellbeing and mental health advice and support for young people and their families across Kent.

This service is available to young people from the age of 0-18 (up until their 19th birthday) and up until the age of 25 for young people with special educational needs or as part of a wider network of support for children and young people in the care of the Local Authority. Children and young people can self-refer or seek advice on 0300 123 4496. Schools and settings can also call to seek advice on the same number. Further information, including the referral form and a downloadable leaflet for young people, click on the image above.



### Working Together to Safeguard Children 2018.

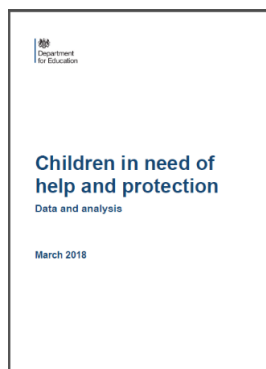
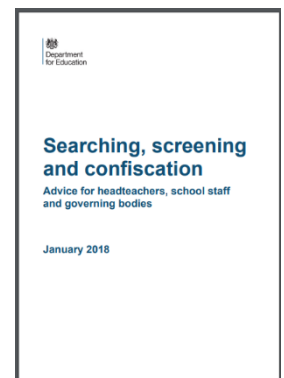
The consultation period has now concluded with 703 responses received from a wide variety of interested stakeholders, including representatives from Local Authorities, schools and other education partners. Nearly 450 delegates attended the regional events and shared their views in person, with the Education Safeguarding Team represented at the London event.

Click the images to be taken to the related documents.

### Searching, Screening and Confiscation.

The Department for Education has updated its Screening, Searching and Confiscation Guidance which can be found below by clicking the image. It clarifies the powers schools have to screen and search pupils, and to confiscate items they find. Section 15 considers the implications regarding dealing with electronic devices.

Headteacher, governing bodies and proprietors should ensure their policies and procedures reflect the most recent version of the guidance.



### Educational Outcomes for Children in Need

The Department for Education has published information looking at the characteristics, experiences and educational outcomes of Children in Need. This data demonstrates that these children overall have poorer educational outcomes than their peers.

The DfE has released a Call for Evidence and is asking for responses to understand what more support they might require in and out of school.

The DfE want to hear from anyone working to improve the educational outcomes of Children in Need, including designated safeguarding leads, special educational needs coordinators and educational psychologists

The consultation ends on 1<sup>st</sup> June 2018 and can be found by clicking on the following link:

<https://www.gov.uk/government/consultations/children-in-need-of-help-and-protection-call-for-evidence>

## The General Data Protection Principle 2018 (GDPR)

The United Kingdom will be implementing the GDPR from the 25th May 2018. The GDPR will replace the 1998 Data Protection Act (DPA) and will be the biggest change to data protection law for 20 years.

Advice from Michelle Hunt, KCC's Information Governance Specialist, is that settings should not panic

unduly. If you are complying with the current law most of your approach to compliance will remain valid under the GDPR and can be the starting point to build from. However, there are some new elements and significant enhancements, so you will have to do some things for the first time and some things differently.

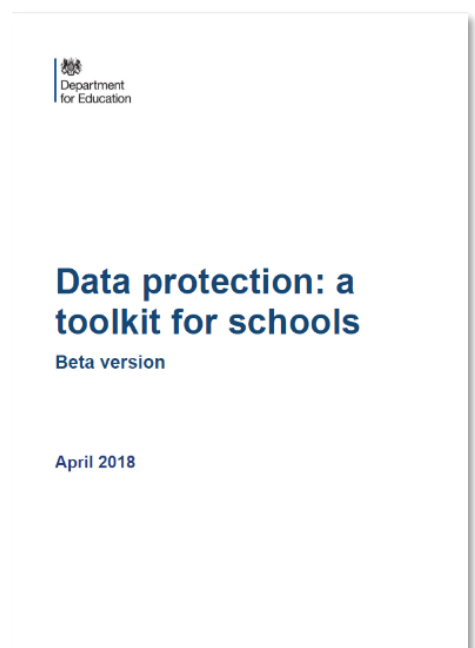
For example, the GDPR does not change the process for transferring pupil education records from a primary school to a secondary school. This is part of an agreed and documented process taken from The Education (Pupil Information) (England) Regulations 2005 Statutory Instrument 1437 – item 9 (3). In fact, if the old school did keep copies of the old pupil records after the data transfer has taken place this would be a breach of the GDPR principles b) c) d) and e).

What is important is that active steps are taken to evidence compliance with the regulations by assessing the impact of data protection activities and identifying the most effective ways to comply with GDPR. For example, if you are introducing a new piece of software or any new system which holds personal information you should complete Data Protection Impact Assessments as part of the process (DPIAs). You will also need to review policies and procedures to ensure the new elements of GDPR are included, whilst remembering safeguarding legislation will always take priority.

For further advice and information follow this link to the GDPR information page on KELSI <http://www.kelsi.org.uk/school-management/data-and-reporting/access-to-information/the-general-data-protection-regulation-gdpr>

And take a look at the ICOs [12 steps](#) to take towards compliance.

Additionally, to support schools, the DfE has published a new data protection toolkit. This guidance will help schools develop policies and processes for data management, from collecting and handling the data through to the ability to respond quickly and appropriately to data breaches.



### Supervision and support

It has recently come to our attention that some schools are not fulfilling the requirement to provide supervision, or one to ones (1:1), to staff who work with children. Much of the guidance relating to safeguarding children refers to the need for staff across all agencies to be appropriately supported and supervised in the work they undertake, with Working Together to Safeguard Children 2015, which applies in its entirety to schools stating:

- *Professionals should be given sufficient time, funding, supervision and support to fulfil their child welfare and safeguarding responsibilities effectively;*
- *Employers are responsible for ensuring that their staff are competent to carry out their responsibilities for safeguarding and promoting the welfare of children and creating an environment where staff feel able to raise concerns and feel supported in their safeguarding role;*
- *All professionals should have regular reviews of their own practice to ensure they improve over time.*

The Early Years Foundation Stage (EYFS), which applies to all staff working in the foundation stage, is also explicit for the need for supervision arrangements to be in place:

*3.21. Providers must put appropriate arrangements in place for the supervision of staff who have contact with children and families. Effective supervision provides support, coaching and training for the practitioner and promotes the interests of children. Supervision should foster a culture of mutual support, teamwork and continuous improvement, which encourages the confidential discussion of sensitive issues.*

Keeping Children Safe in Education 2016 does not specifically refer to “supervision” but when talking about the role of the DSL in Annex B, it stipulates the need for support for staff:

*...this person should have the appropriate status and authority within the school to carry out the duties of the post. They should be given the time, funding, training, resources and support to provide advice and support to other staff on child welfare and child protection matters...*

Providing training for schools in setting up supervision systems and developing supervisory skills is not currently part of our core training programme but we would be happy to develop this if there is sufficient demand. If you are interested in further information about supervision training and support or would like to discuss any aspect of this further please contact your Area Safeguarding Adviser.



## e-Learning courses

The Education Safeguarding Team are in the process of developing an e-learning course for childminders which allows them to work at a time and pace to suit. This certificated course will cover everything they need to know about safeguarding including:

Understanding the key tasks of promoting welfare and safeguarding, recognising vulnerability, the responsibilities of the Designated Safeguarding Lead role and procedures specific to Kent, including referral to Early Help and Specialist Children's Services.

**WATCH  
THIS  
SPACE**

We will be developing further e-Learning courses over the coming months so if you have any specific ideas or requests, please contact Claire Ray, Principal Officer.

## Local Authority Designated Officer Contacts

The LADO Team deal with allegations against staff who work with children either in education or the wider workforce. If you need to speak to the LADO Team regarding an **allegation** against a member of staff your details will be taken and passed to the intake officer. The same intake officer will support you through the process until the matter has been resolved. Please note that the team no longer works on an area basis.

### **LADO Team contact number: 03000 410 888**

Now it's just one number for the whole LADO Team covering Kent Local Authority

**Email: [kentchildrenslado@kent.gov.uk](mailto:kentchildrenslado@kent.gov.uk)**

### **Kroner House**

**Jinder Pal Kaur**  
LADO Interim Team Manager

**Marta Salavera**  
LADO

**Yetunde Areeson**  
LADO

**Lorrisa Webber**  
LADO

**Cassandra Michael**  
LADO (Temporary)

**Contact & Referral Officer & PA to LADO Manager** Emma Cumberbatch  
**Contact & Referral Officer** Jane Davey

If a call is urgent i.e. **a child is in immediate danger**, and the call cannot go through to the officer on Duty, the call should go through to the Central Referral Unit on: 03000 41 11 11

Urgent child protection issue outside of office hours:  
Call the Central Duty Out of Hours Number: 03000 41 91 91

**Children, Young People & Education  
Education Safeguarding Team Contacts – 2018**

	Office	Mobile	Email Address
<b>Head Office – Sessions House</b> Room 2.04, Sessions House, County Hall, Maidstone ME14 1XQ			
<b>Claire Ray</b> Principal Officer	<b>03000 415788</b>	07920 108828	<a href="mailto:claire.ray@kent.gov.uk">claire.ray@kent.gov.uk</a>
<b>Kay Ashman</b> Admin Support (part-time)			
<b>Shirley Glasgow</b> Admin Support			
<b>Rebecca Avery</b> Education Safeguarding Adviser – Online Protection	<b>03000 415797</b>	07789 968705	<a href="mailto:rebecca.avery@kent.gov.uk">rebecca.avery@kent.gov.uk</a> or for general enquiries: <a href="mailto:esafetyofficer@kent.gov.uk">esafetyofficer@kent.gov.uk</a>
<b>Ashley Assiter</b> e-Safety Development Officer	<b>03000 422148</b>	07545 743310	<a href="mailto:Ashley.assiter@kent.gov.uk">Ashley.assiter@kent.gov.uk</a> or for general enquiries: <a href="mailto:esafetyofficer@kent.gov.uk">esafetyofficer@kent.gov.uk</a>
<b>TRAINING &amp; DEVELOPMENT</b> Brook House, Reeves Way, Whitstable CT5 3SS			
<b>Mike O’Connell</b> Education Safeguarding Adviser	<b>03000 418707</b>	07740 183807	<a href="mailto:mike.oconnell@kent.gov.uk">mike.oconnell@kent.gov.uk</a>
<b>NORTH KENT – Dartford, Gravesham, Sevenoaks</b> Worrall House, 30 Kings Hill Avenue, West Malling, ME19 4AE			
<b>Jonathan Hogben</b> Area Safeguarding Adviser (Education)	<b>03000 412445</b>	07740 183798	<a href="mailto:jonathan.hogben@kent.gov.uk">jonathan.hogben@kent.gov.uk</a>
<b>Joanne Barnett</b> Area Safeguarding Assistant			<a href="mailto:joanne.barnett@kent.gov.uk">joanne.barnett@kent.gov.uk</a>
<b>Linda Funnell</b> Safeguarding Admin Support (part-time)			
<b>WEST KENT – Tonbridge &amp; Malling, Tunbridge Wells, Maidstone</b> Worrall House, 30 Kings Hill Avenue, West Malling, ME19 4AE			
<b>Robyn Windibank</b> Area Safeguarding Adviser (Education)	<b>03000 412284</b>	07540 677200	<a href="mailto:robyn.windibank@kent.gov.uk">robyn.windibank@kent.gov.uk</a>
<b>Joanne Barnett</b> Area Safeguarding Assistant			<a href="mailto:joanne.barnett@kent.gov.uk">joanne.barnett@kent.gov.uk</a>
<b>Linda Funnell</b> Safeguarding Admin Support (part-time)			
<b>EAST KENT – Swale, Canterbury, Thanet</b> Brook House, Reeves Way, Whitstable CT5 3SS			
<b>Julie Maguire</b> Area Safeguarding Adviser (Education)	<b>03000 418503</b>	07968 620707	<a href="mailto:julie.maguire@kent.gov.uk">julie.maguire@kent.gov.uk</a>
<b>Tracy McDowell-Austin</b> Area Safeguarding Assistant			<a href="mailto:tracy.mcdowell-austin@kent.gov.uk">tracy.mcdowell-austin@kent.gov.uk</a>
<b>Katie Agnew</b> Safeguarding Admin Support (part-time)			
<b>SOUTH KENT – Ashford, Folkestone, Hythe, Dover</b> Kroner House, Eurogate Business Park, Ashford TN24 8XU			
<b>Peter Lewer</b> Area Safeguarding Adviser (Education)	<b>03000 415648</b>	07917 602413	<a href="mailto:peter.lewer@kent.gov.uk">peter.lewer@kent.gov.uk</a>
<b>Tracy McDowell-Austin</b> Area Safeguarding Assistant			<a href="mailto:tracy.mcdowell-Austin@kent.gov.uk">tracy.mcdowell-Austin@kent.gov.uk</a>
<b>Lin Storton</b> Safeguarding Admin Support (part-time)			

**Central Duty: 03000 41 11 11**

Urgent child protection issue outside of office hours call: **03000 41 91 91**

Early Help & Preventative Services: [earlyhelp@kent.gov.uk](mailto:earlyhelp@kent.gov.uk) or phone **03000 419222**